

Datasheet for ABIN7443569  
**anti-PSMA antibody (AA 274-587)**



[Go to Product page](#)

5 Images

## Overview

|                      |  |
|----------------------|--|
| Quantity:            | 100 µL   |
| Target:              | PSMA (FOLH1)   |
| Binding Specificity: | AA 274-587   |
| Reactivity:          | Human  |
| Host:                | Rabbit   |
| Clonality:           | Polyclonal   |
| Conjugate:           | This PSMA antibody is un-conjugated  |
| Application:         | Western Blotting (WB), Immunohistochemistry (IHC), Immunocytochemistry (ICC), Immunoprecipitation (IP) |

## Product Details

|                   |  |
|-------------------|--|
| Purpose:          | Polyclonal Antibody to Prostate-specific Membrane Antigen (PMSA)   |
| Immunogen:        | Recombinant Prostate-specific Membrane Antigen (PMSA) corresponding to Ala274~Leu587 with N-terminal His Tag   |
| Isotype:          | IgG  |
| Specificity:      | The antibody is a rabbit polyclonal antibody raised against PMSA. It has been selected for its ability to recognize PMSA in immunohistochemical staining and western blotting. |
| Cross-Reactivity: | Mouse, Rat   |
| Purification:     | Antigen-specific affinity chromatography followed by Protein A affinity chromatography   |

## Target Details

---

|                   |  |
|-------------------|--|
| Target:           | PSMA (FOLH1)   |
| Alternative Name: | Prostate-specific Membrane Antigen ( <a href="#">FOLH1 Products</a> )  |
| Background:       | FOLH1, PSM, FGCP, FOLH, GCP2, NAALAD1, GCPII, mGCP, NAALADase I, Glutamate Carboxypeptidase II, Folate Hydrolase 1, Folylpoly-gamma-glutamate carboxypeptidase |

## Application Details

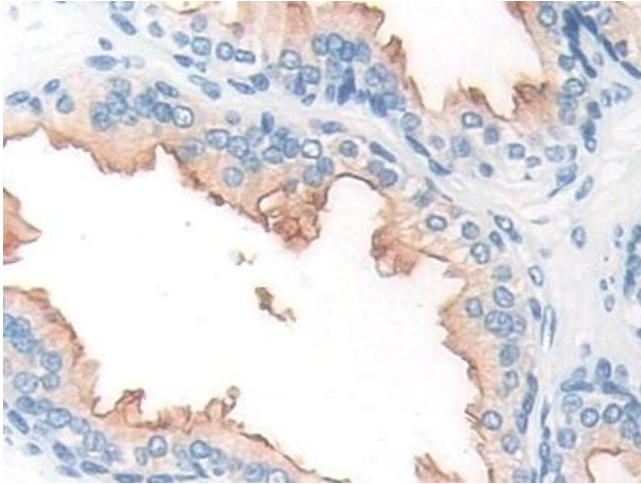
---

|                    |   |
|--------------------|---|
| Application Notes: | Western blotting: 0.5-2 µg/mL<br>Immunohistochemistry: 5-20 µg/mL<br>Immunocytochemistry: 5-20 µg/mL<br>Optimal working dilutions must be determined by end user.   |
| Comment:           | The thermal stability is described by the loss rate. The loss rate was determined by accelerated thermal degradation test, that is, incubate the protein at 37°C for 48h, and no obvious degradation and precipitation were observed. The loss rate is less than 5% within the expiration date under appropriate storage condition. |
| Restrictions:      | For Research Use only   |

## Handling

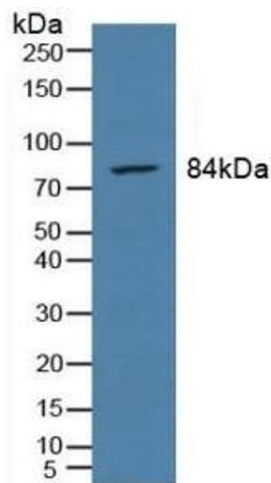
---

|                    |   |
|--------------------|---|
| Format:            | Liquid  |
| Buffer:            | 0.01M PBS, pH 7.4, containing 0.05 % Proclin-300, 50 % glycerol.  |
| Preservative:      | ProClin   |
| Precaution of Use: | This product contains ProClin: a POISONOUS AND HAZARDOUS SUBSTANCE which should be handled by trained staff only.   |
| Storage:           | 4 °C,-20 °C   |
| Storage Comment:   | Store at 4°C for frequent use. Stored at -20°C in a manual defrost freezer for two year without detectable loss of activity. Avoid repeated freeze-thaw cycles. |
| Expiry Date:       | 24 months   |



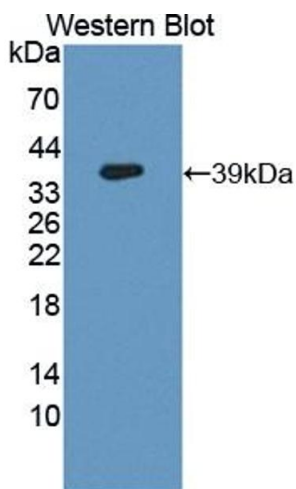
### Immunohistochemistry

**Image 1.** Detection of PMSA in Human Prostate Tissue using Polyclonal Antibody to Prostate-specific Membrane Antigen (PMSA)



### Western Blotting

**Image 2.** Detection of PMSA in Rat Prostate Gland Tissue using Polyclonal Antibody to Prostate-specific Membrane Antigen (PMSA)



### Western Blotting

**Image 3.** Detection of Recombinant GCPII, Human using Polyclonal Antibody to Prostate-specific Membrane Antigen (PMSA)

Please check the [product details page](#) for more images. Overall 5 images are available for ABIN7443569.