

Datasheet for ABIN7443623
anti-GLTP antibody (AA 2-209)

6 Images

[Go to Product page](#)

Overview

| | |
|----------------------|--|
| Quantity: | 100 µL |
| Target: | GLTP |
| Binding Specificity: | AA 2-209 |
| Reactivity: | Human |
| Host: | Rabbit |
| Clonality: | Polyclonal |
| Conjugate: | This GLTP antibody is un-conjugated |
| Application: | Western Blotting (WB), Immunohistochemistry (IHC), Immunoprecipitation (IP), Immunocytochemistry (ICC) |

Product Details

| | |
|-------------------|--|
| Purpose: | Polyclonal Antibody to Glycolipid Transfer Protein (GLTP) |
| Immunogen: | Recombinant Glycolipid Transfer Protein (GLTP) corresponding to Ala2~Val209 with N-terminal His and GST Tag |
| Isotype: | IgG |
| Specificity: | The antibody is a rabbit polyclonal antibody raised against GLTP. It has been selected for its ability to recognize GLTP in immunohistochemical staining and western blotting. |
| Cross-Reactivity: | Mouse, Pig, Rat |
| Purification: | Antigen-specific affinity chromatography followed by Protein A affinity chromatography |

Target Details

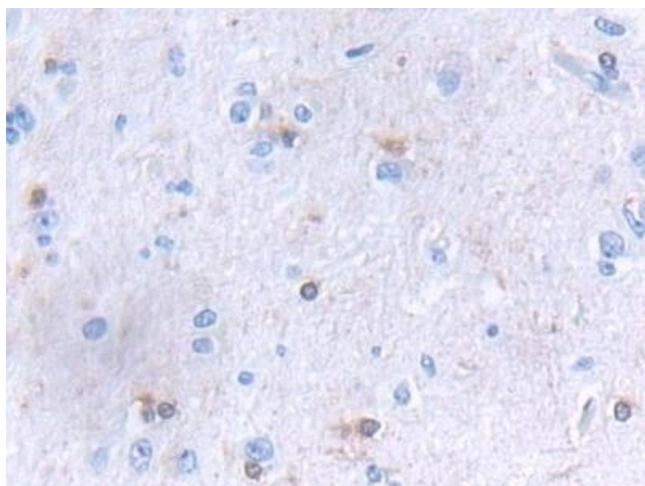
| | |
|-------------------|---|
| Target: | GLTP |
| Alternative Name: | Glycolipid Transfer Protein (GLTP Products) |

Application Details

| | |
|--------------------|---|
| Application Notes: | Western blotting: 0.5-2 µg/mL 1:430-1700 Immunohistochemistry: 5-20 µg/mL 1:43-170 Immunocytochemistry: 5-20 µg/mL 1:43-170 Optimal working dilutions must be determined by end user. |
| Comment: | The thermal stability is described by the loss rate. The loss rate was determined by accelerated thermal degradation test, that is, incubate the protein at 37°C for 48h, and no obvious degradation and precipitation were observed. The loss rate is less than 5% within the expiration date under appropriate storage condition. |
| Restrictions: | For Research Use only |

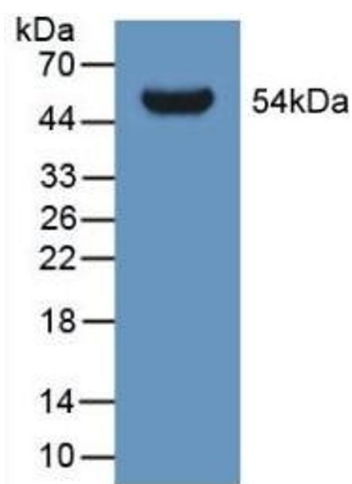
Handling

| | |
|--------------------|---|
| Format: | Liquid |
| Buffer: | PBS, pH 7.4, containing 0.02 % Sodium azide, 50 % glycerol. |
| Preservative: | Sodium azide |
| Precaution of Use: | This product contains Sodium azide: a POISONOUS AND HAZARDOUS SUBSTANCE which should be handled by trained staff only. |
| Storage: | 4 °C,-20 °C |
| Storage Comment: | Store at 4°C for frequent use. Stored at -20°C in a manual defrost freezer for two year without detectable loss of activity. Avoid repeated freeze-thaw cycles. |
| Expiry Date: | 24 months |



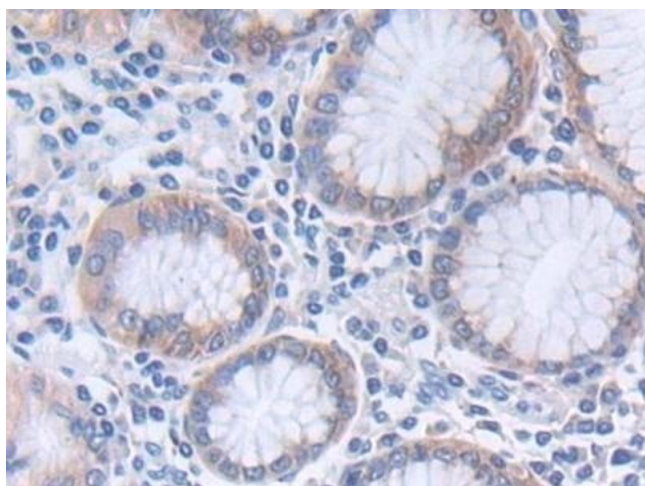
Immunohistochemistry

Image 1. Detection of GLTP in Human Cerebrum Tissue using Polyclonal Antibody to Glycolipid Transfer Protein (GLTP)



Western Blotting

Image 2. Detection of Recombinant GLTP, Human using Polyclonal Antibody to Glycolipid Transfer Protein (GLTP)



Immunohistochemistry

Image 3. Detection of GLTP in Human Stomach Tissue using Polyclonal Antibody to Glycolipid Transfer Protein (GLTP)

Please check the [product details page](#) for more images. Overall 6 images are available for ABIN7443623.