

Datasheet for ABIN7443659
anti-PSMD6 antibody (AA 1-389)

6 Images

[Go to Product page](#)

Overview

Quantity:	100 µL
Target:	PSMD6
Binding Specificity:	AA 1-389
Reactivity:	Human
Host:	Rabbit
Clonality:	Polyclonal
Conjugate:	This PSMD6 antibody is un-conjugated
Application:	Western Blotting (WB), Immunohistochemistry (IHC), Immunoprecipitation (IP), Immunocytochemistry (ICC)

Product Details

Purpose:	Polyclonal Antibody to Proteasome 26S Subunit, Non ATPase 6 (PSMD6)
Immunogen:	Recombinant Proteasome 26S Subunit, Non ATPase 6 (PSMD6) corresponding to Met1~Met389 with N-terminal His and GST Tag
Isotype:	IgG
Specificity:	The antibody is a rabbit polyclonal antibody raised against PSMD6. It has been selected for its ability to recognize PSMD6 in immunohistochemical staining and western blotting.
Cross-Reactivity:	Mouse, Pig
Purification:	Antigen-specific affinity chromatography followed by Protein A affinity chromatography

Target Details

Target:	PSMD6
Alternative Name:	Proteasome 26S Subunit, Non ATPase 6 (PSMD6 Products)
Background:	S10, p44S10, Rpn7, PFAAP4, 26S proteasome regulatory subunit RPN7, Breast cancer-associated protein SGA-113M, Phosphonoformate immuno-associated protein 4
Pathways:	Mitotic G1-G1/S Phases , DNA Replication , Synthesis of DNA , Ubiquitin Proteasome Pathway

Application Details

Application Notes:	Western blotting: 0.5-2 µg/mL 1:150-600 Immunohistochemistry: 5-20 µg/mL 1:15-60 Immunocytochemistry: 5-20 µg/mL 1:15-60 Optimal working dilutions must be determined by end user.
Comment:	The thermal stability is described by the loss rate. The loss rate was determined by accelerated thermal degradation test, that is, incubate the protein at 37°C for 48h, and no obvious degradation and precipitation were observed. The loss rate is less than 5% within the expiration date under appropriate storage condition.
Restrictions:	For Research Use only

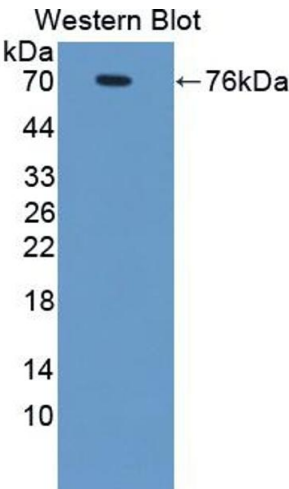
Handling

Format:	Liquid
Buffer:	PBS, pH 7.4, containing 0.02 % Sodium azide, 50 % glycerol.
Preservative:	Sodium azide
Precaution of Use:	This product contains Sodium azide: a POISONOUS AND HAZARDOUS SUBSTANCE which should be handled by trained staff only.
Storage:	4 °C,-20 °C
Storage Comment:	Store at 4°C for frequent use. Stored at -20°C in a manual defrost freezer for two year without detectable loss of activity. Avoid repeated freeze-thaw cycles.
Expiry Date:	24 months



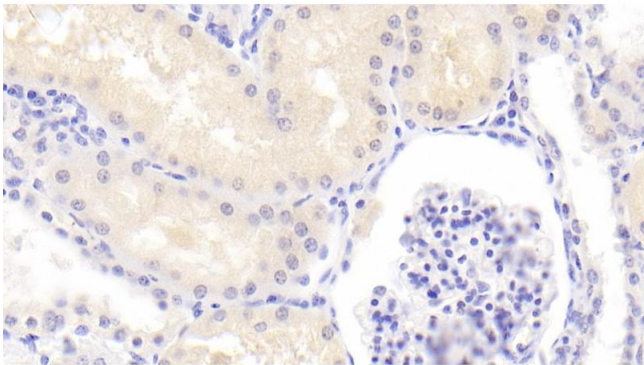
Western Blotting

Image 1. Detection of PSMD6 in Human 293T cell lysate using Polyclonal Antibody to Proteasome 26S Subunit, Non ATPase 6 (PSMD6)



Western Blotting

Image 2. Detection of Recombinant PSMD6, Human using Polyclonal Antibody to Proteasome 26S Subunit, Non ATPase 6 (PSMD6)



Immunohistochemistry

Image 3. Detection of PSMD6 in Human Kidney Tissue using Polyclonal Antibody to Proteasome 26S Subunit, Non ATPase 6 (PSMD6)

Please check the [product details page](#) for more images. Overall 6 images are available for ABIN7443659.