

Datasheet for ABIN7443680  
**anti-C1QBP antibody (AA 71-278)**

## 3 Images

[Go to Product page](#)

## Overview

Quantity:	100 µL
Target:	C1QBP
Binding Specificity:	AA 71-278
Reactivity:	Cow
Host:	Rabbit
Clonality:	Polyclonal
Conjugate:	This C1QBP antibody is un-conjugated
Application:	Western Blotting (WB), Immunohistochemistry (IHC), Immunoprecipitation (IP), Immunocytochemistry (ICC)

## Product Details

Purpose:	Polyclonal Antibody to Complement component 1 Q subcomponent-binding protein, mitochondrial (C1QBP)
Immunogen:	Recombinant Complement component 1 Q subcomponent-binding protein, mitochondrial (C1QBP) corresponding to Leu71~Lys278
Isotype:	IgG
Specificity:	The antibody is a rabbit polyclonal antibody raised against C1QBP. It has been selected for its ability to recognize C1QBP in immunohistochemical staining and western blotting.
Cross-Reactivity:	Cow, Human
Purification:	Antigen-specific affinity chromatography followed by Protein A affinity chromatography

## Target Details

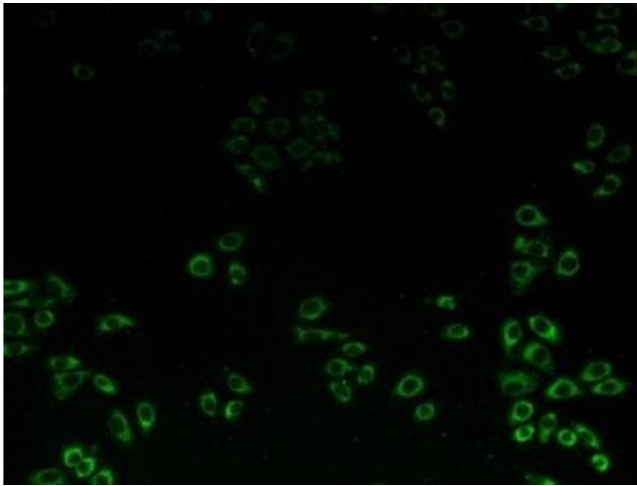
Target:	C1QBP
Alternative Name:	Complement component 1 Q subcomponent-binding protein, mitochondrial ( <a href="#">C1QBP Products</a> )
Background:	HABP1, GC1QBP, SF2p32, GC1Q-R, GC1qR, P32, Hyaluronan Binding Protein 1, Splicing Factor SF2-Associated Protein, ASF/SF2-associated p32
Pathways:	<a href="#">Ribonucleoprotein Complex Subunit Organization</a> , <a href="#">Ribosome Assembly</a>

## Application Details

Application Notes:	Western blotting: 0.5-2 µg/mL 1:500-2000 Immunohistochemistry: 5-20 µg/mL 1:50-200 Immunocytochemistry: 5-20 µg/mL 1:50-200 Optimal working dilutions must be determined by end user.
Comment:	The thermal stability is described by the loss rate. The loss rate was determined by accelerated thermal degradation test, that is, incubate the protein at 37°C for 48h, and no obvious degradation and precipitation were observed. The loss rate is less than 5% within the expiration date under appropriate storage condition.
Restrictions:	For Research Use only

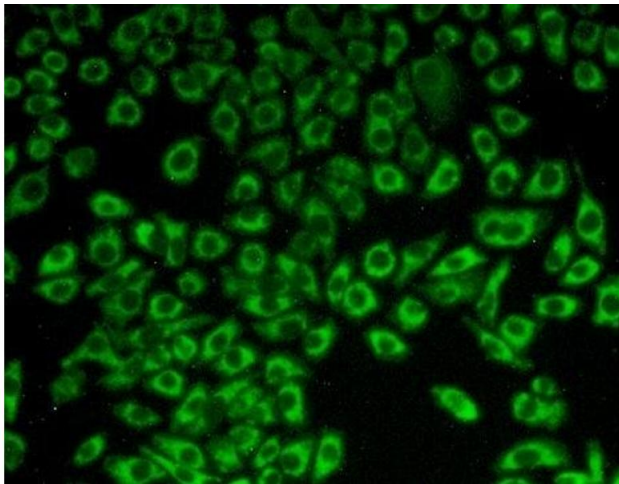
## Handling

Format:	Liquid
Buffer:	0.01M PBS, pH 7.4, containing 0.05 % Proclin-300, 50 % glycerol.
Preservative:	ProClin
Precaution of Use:	This product contains ProClin: a POISONOUS AND HAZARDOUS SUBSTANCE which should be handled by trained staff only.
Storage:	4 °C,-20 °C
Storage Comment:	Store at 4°C for frequent use. Stored at -20°C in a manual defrost freezer for two year without detectable loss of activity. Avoid repeated freeze-thaw cycles.
Expiry Date:	24 months



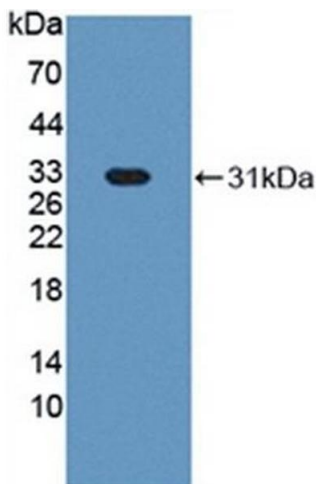
#### Immunohistochemistry

**Image 1.** Detection of C1QBP in Hela cells using Polyclonal Antibody to Complement component 1 Q subcomponent-binding protein, mitochondrial (C1QBP)



#### Immunofluorescence

**Image 2.** Detection of C1QBP in Hela cells using Polyclonal Antibody to Complement component 1 Q subcomponent-binding protein, mitochondrial (C1QBP)



#### Western Blotting

**Image 3.** Detection of Recombinant HABP1, Bovine using Polyclonal Antibody to Complement component 1 Q subcomponent-binding protein, mitochondrial (C1QBP)