

Datasheet for ABIN7443731  
**anti-PLA2G2D antibody (AA 20-134)**[Go to Product page](#)

## 7 Images

## Overview

Quantity:	100 µL
Target:	PLA2G2D
Binding Specificity:	AA 20-134
Reactivity:	Rat
Host:	Rabbit
Clonality:	Polyclonal
Conjugate:	This PLA2G2D antibody is un-conjugated
Application:	Western Blotting (WB), Immunohistochemistry (IHC), Immunoprecipitation (IP), Immunocytochemistry (ICC)

## Product Details

Purpose:	Polyclonal Antibody to Phospholipase A2, Group IID (PLA2G2D)
Immunogen:	Recombinant Phospholipase A2, Group IID (PLA2G2D) corresponding to Gly20~Arg134 with N-terminal His Tag
Isotype:	IgG
Specificity:	The antibody is a rabbit polyclonal antibody raised against PLA2G2D. It has been selected for its ability to recognize PLA2G2D in immunohistochemical staining and western blotting.
Purification:	Antigen-specific affinity chromatography followed by Protein A affinity chromatography

## Target Details

Target:	PLA2G2D
---------	---------

## Target Details

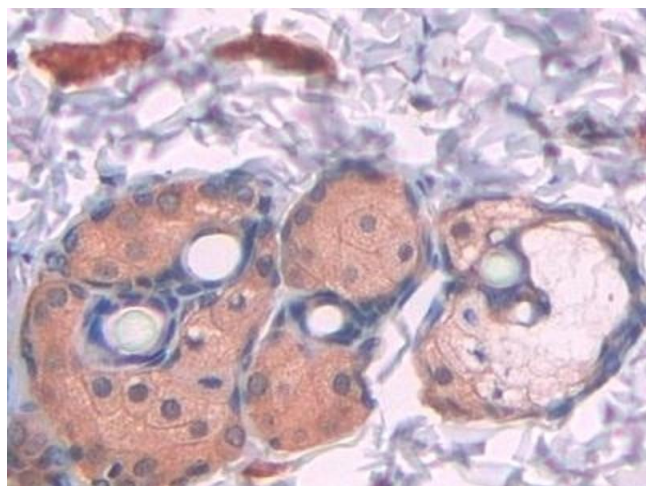
Alternative Name:	Phospholipase A2, Group IID ( <a href="#">PLA2G2D Products</a> )
Background:	PLA2G2D, sPLA2S, s-PLA2, sPLA2, SPLASH, Secreted Phospholipase A2, Phosphatidylcholine 2-acylhydrolase 2D, Secretory-type PLA, stroma-associated homolog
Pathways:	<a href="#">Inositol Metabolic Process</a>

## Application Details

Application Notes:	Western blotting: 0.5-2 µg/mL Immunohistochemistry: 5-20 µg/mL Immunocytochemistry: 5-20 µg/mL Optimal working dilutions must be determined by end user.
Comment:	The thermal stability is described by the loss rate. The loss rate was determined by accelerated thermal degradation test, that is, incubate the protein at 37°C for 48h, and no obvious degradation and precipitation were observed. The loss rate is less than 5% within the expiration date under appropriate storage condition.
Restrictions:	For Research Use only

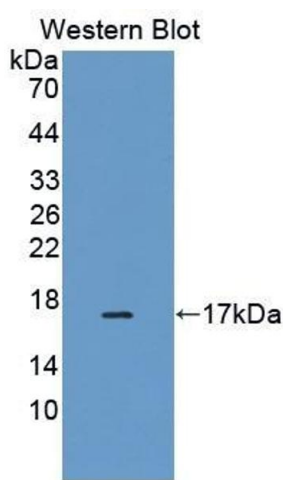
## Handling

Format:	Liquid
Buffer:	PBS, pH 7.4, containing 0.02 % Sodium azide, 50 % glycerol.
Preservative:	Sodium azide
Precaution of Use:	This product contains Sodium azide: a POISONOUS AND HAZARDOUS SUBSTANCE which should be handled by trained staff only.
Storage:	4 °C, -20 °C
Storage Comment:	Store at 4°C for frequent use. Stored at -20°C in a manual defrost freezer for two year without detectable loss of activity. Avoid repeated freeze-thaw cycles.
Expiry Date:	24 months



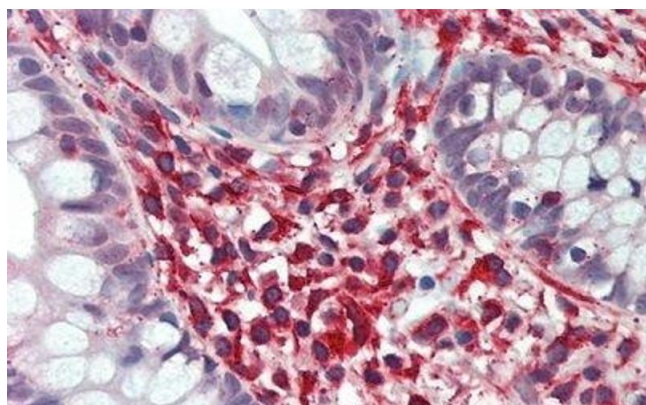
#### Immunohistochemistry

**Image 1.** Detection of PLA2G2D in Rat Skin Tissue using Polyclonal Antibody to Phospholipase A2, Group IID (PLA2G2D)



#### Western Blotting

**Image 2.** Detection of Recombinant PLA2G2D, Rat using Polyclonal Antibody to Phospholipase A2, Group IID (PLA2G2D)



#### Immunohistochemistry

**Image 3.** Detection of PLA2G2D in Human Small Intestine Tissue using Polyclonal Antibody to Phospholipase A2, Group IID (PLA2G2D)

Please check the [product details page](#) for more images. Overall 7 images are available for ABIN7443731.