



[Go to Product page](#)

Datasheet for ABIN7443797
anti-CIDEDEC antibody (AA 1-221)

3 Images

Overview

Quantity:	100 µL
Target:	CIDEDEC
Binding Specificity:	AA 1-221
Reactivity:	Rat
Host:	Rabbit
Clonality:	Polyclonal
Conjugate:	This CIDEDEC antibody is un-conjugated
Application:	Western Blotting (WB), Immunohistochemistry (IHC), Immunocytochemistry (ICC), Immunoprecipitation (IP)

Product Details

Purpose:	Polyclonal Antibody to Cell Death Inducing DFFA Like Effector C (CIDEDEC)
Immunogen:	Recombinant Cell Death Inducing DFFA Like Effector C (CIDEDEC) corresponding to Met1~Gln221
Isotype:	IgG
Specificity:	The antibody is a rabbit polyclonal antibody raised against CIDEDEC. It has been selected for its ability to recognize CIDEDEC in immunohistochemical staining and western blotting.
Purification:	Antigen-specific affinity chromatography followed by Protein A affinity chromatography

Target Details

Target:	CIDEDEC
---------	---------

Target Details

Alternative Name: Cell Death Inducing DFFA Like Effector C ([CIDEC Products](#))

Background: CIDE-3, Fsp27, Fat-specific protein FSP27 homolog

Application Details

Application Notes: Western blotting: 0.5-2 µg/mL
Immunohistochemistry: 5-20 µg/mL
Immunocytochemistry: 5-20 µg/mL
Optimal working dilutions must be determined by end user.

Comment: The thermal stability is described by the loss rate. The loss rate was determined by accelerated thermal degradation test, that is, incubate the protein at 37°C for 48h, and no obvious degradation and precipitation were observed. The loss rate is less than 5% within the expiration date under appropriate storage condition.

Restrictions: For Research Use only

Handling

Format: Liquid

Buffer: 0.01M PBS, pH 7.4, containing 0.05 % Proclin-300, 50 % glycerol.

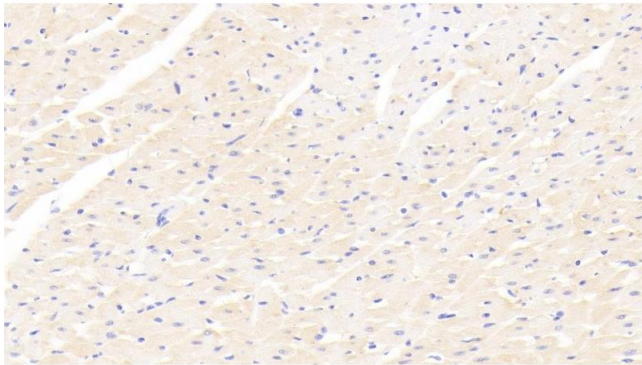
Preservative: ProClin

Precaution of Use: This product contains ProClin: a POISONOUS AND HAZARDOUS SUBSTANCE which should be handled by trained staff only.

Storage: 4 °C,-20 °C

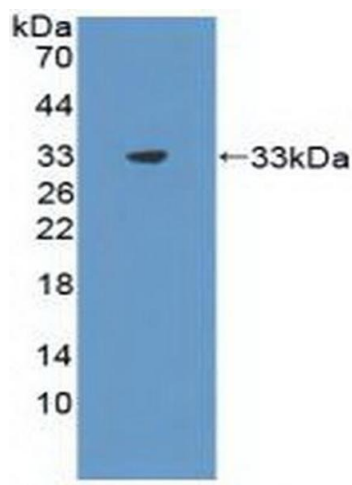
Storage Comment: Store at 4°C for frequent use. Stored at -20°C in a manual defrost freezer for two year without detectable loss of activity. Avoid repeated freeze-thaw cycles.

Expiry Date: 24 months



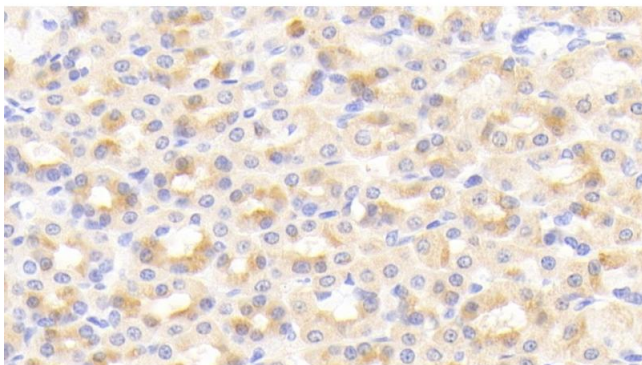
Immunohistochemistry

Image 1. Detection of CIDEc in Rat Cardiac Muscle Tissue using Polyclonal Antibody to Cell Death Inducing DFFA Like Effector C (CIDEc)



Western Blotting

Image 2. Detection of Recombinant CIDEc, Rat using Polyclonal Antibody to Cell Death Inducing DFFA Like Effector C (CIDEc)



Immunohistochemistry

Image 3. Detection of CIDEc in Rat Stomach Tissue using Polyclonal Antibody to Cell Death Inducing DFFA Like Effector C (CIDEc)