

Datasheet for ABIN7443983
anti-KERA antibody (AA 21-292)

5 Images

[Go to Product page](#)

Overview

Quantity:	100 µL
Target:	KERA
Binding Specificity:	AA 21-292
Reactivity:	Mouse
Host:	Rabbit
Clonality:	Polyclonal
Conjugate:	This KERA antibody is un-conjugated
Application:	Western Blotting (WB), Immunohistochemistry (IHC), Immunoprecipitation (IP), Immunocytochemistry (ICC)

Product Details

Purpose:	Polyclonal Antibody to Keratocan (KERA)
Immunogen:	Recombinant Keratocan (KERA) corresponding to Gln21~His292
Isotype:	IgG
Specificity:	The antibody is a rabbit polyclonal antibody raised against KERA. It has been selected for its ability to recognize KERA in immunohistochemical staining and western blotting.
Cross-Reactivity:	Human, Rat
Purification:	Antigen-specific affinity chromatography followed by Protein A affinity chromatography

Target Details

Target:	KERA
Alternative Name:	Keratocan (KERA Products)
Background:	CNA2, SLRR2B, Keratocan Proteoglycan, Keratan sulfate proteoglycan keratocan
Pathways:	Glycosaminoglycan Metabolic Process

Application Details

Application Notes:	Western blotting: 0.5-2 µg/mL Immunohistochemistry: 5-20 µg/mL Immunocytochemistry: 5-20 µg/mL Optimal working dilutions must be determined by end user.
Comment:	The thermal stability is described by the loss rate. The loss rate was determined by accelerated thermal degradation test, that is, incubate the protein at 37°C for 48h, and no obvious degradation and precipitation were observed. The loss rate is less than 5% within the expiration date under appropriate storage condition.
Restrictions:	For Research Use only

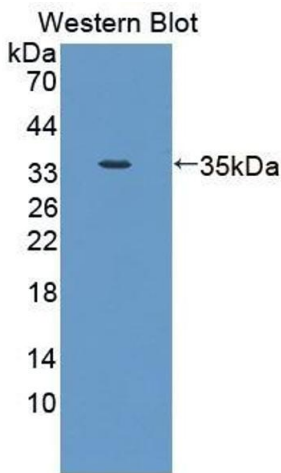
Handling

Format:	Liquid
Buffer:	PBS, pH 7.4, containing 0.02 % Sodium azide, 50 % glycerol.
Preservative:	Sodium azide
Precaution of Use:	This product contains Sodium azide: a POISONOUS AND HAZARDOUS SUBSTANCE which should be handled by trained staff only.
Storage:	4 °C, -20 °C
Storage Comment:	Store at 4°C for frequent use. Stored at -20°C in a manual defrost freezer for two year without detectable loss of activity. Avoid repeated freeze-thaw cycles.
Expiry Date:	24 months



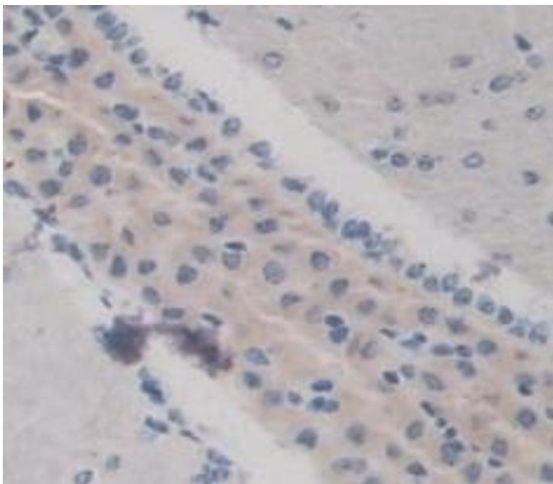
Western Blotting

Image 1. Detection of KERA in Rat Eye lysate using Polyclonal Antibody to Keratocan (KERA)



Western Blotting

Image 2. Detection of Recombinant KERA, Mouse using Polyclonal Antibody to Keratocan (KERA)



Immunohistochemistry

Image 3. #VALUE!

Please check the [product details page](#) for more images. Overall 5 images are available for ABIN7443983.