



[Go to Product page](#)

Datasheet for ABIN7444016
anti-Nestin antibody (AA 197-462)

3 Images

Overview

Quantity:	100 µL
Target:	Nestin (NES)
Binding Specificity:	AA 197-462
Reactivity:	Rat
Host:	Rabbit
Clonality:	Polyclonal
Conjugate:	This Nestin antibody is un-conjugated
Application:	Western Blotting (WB), Immunohistochemistry (IHC), Immunocytochemistry (ICC), Immunoprecipitation (IP)

Product Details

Purpose:	Polyclonal Antibody to Nestin (NES)
Immunogen:	Recombinant Nestin (NES) corresponding to Arg197~Asn462
Isotype:	IgG
Specificity:	The antibody is a rabbit polyclonal antibody raised against NES. It has been selected for its ability to recognize NES in immunohistochemical staining and western blotting.
Purification:	Antigen-specific affinity chromatography followed by Protein A affinity chromatography

Target Details

Target:	Nestin (NES)
---------	--------------

Target Details

Alternative Name: Nestin ([NES Products](#))

Application Details

Application Notes: Western blotting: 0.5-2 µg/mL
Immunohistochemistry: 5-20 µg/mL
Immunocytochemistry: 5-20 µg/mL
Optimal working dilutions must be determined by end user.

Comment: The thermal stability is described by the loss rate. The loss rate was determined by accelerated thermal degradation test, that is, incubate the protein at 37°C for 48h, and no obvious degradation and precipitation were observed. The loss rate is less than 5% within the expiration date under appropriate storage condition.

Restrictions: For Research Use only

Handling

Format: Liquid

Buffer: 0.01M PBS, pH 7.4, containing 0.05 % Proclin-300, 50 % glycerol.

Preservative: ProClin

Precaution of Use: This product contains ProClin: a POISONOUS AND HAZARDOUS SUBSTANCE which should be handled by trained staff only.

Storage: 4 °C, -20 °C

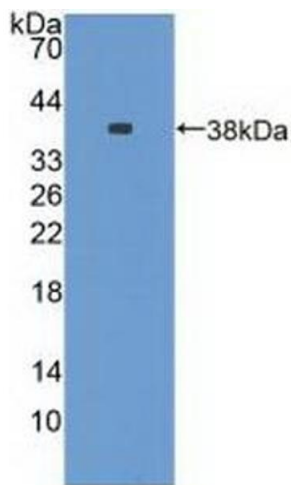
Storage Comment: Store at 4°C for frequent use. Stored at -20°C in a manual defrost freezer for two year without detectable loss of activity. Avoid repeated freeze-thaw cycles.

Expiry Date: 24 months



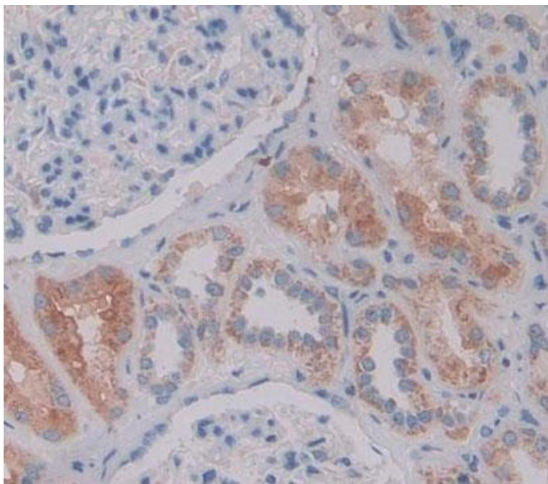
Western Blotting

Image 1. Detection of NES in Rat Cerebrum lysate using Polyclonal Antibody to Nestin (NES)



Western Blotting

Image 2. Detection of Recombinant NES, Rat using Polyclonal Antibody to Nestin (NES)



Immunohistochemistry

Image 3. #VALUE!