



[Go to Product page](#)

Datasheet for ABIN7444271

anti-TUBA3C antibody (AA 1-300)

3 Images

Overview

Quantity:	100 µL
Target:	TUBA3C
Binding Specificity:	AA 1-300
Reactivity:	Human
Host:	Rabbit
Clonality:	Polyclonal
Conjugate:	This TUBA3C antibody is un-conjugated
Application:	Western Blotting (WB), Immunohistochemistry (IHC), Immunoprecipitation (IP), Immunocytochemistry (ICC)

Product Details

Purpose:	Polyclonal Antibody to Tubulin Alpha 3C (TUBa3C)
Immunogen:	Recombinant Tubulin Alpha 3C (TUBa3C) corresponding to Met1~Asn300
Isotype:	IgG
Specificity:	The antibody is a rabbit polyclonal antibody raised against TUBA3C. It has been selected for its ability to recognize TUBa3C in immunohistochemical staining and western blotting.
Cross-Reactivity:	Mouse, Pig, Rat
Purification:	Antigen-specific affinity chromatography followed by Protein A affinity chromatography

Target Details

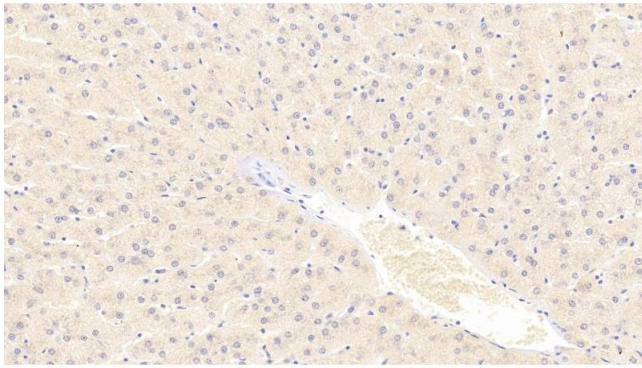
Target:	TUBA3C
Alternative Name:	Tubulin Alpha 3C (TUBA3C Products)
Background:	TUB-A3C, TUBA3-C, TUBa3D, TUBA2, Tubulin alpha-2 chain
Pathways:	Microtubule Dynamics

Application Details

Application Notes:	Western blotting: 0.5-2 µg/mL Immunohistochemistry: 5-20 µg/mL Immunocytochemistry: 5-20 µg/mL Optimal working dilutions must be determined by end user.
Comment:	The thermal stability is described by the loss rate. The loss rate was determined by accelerated thermal degradation test, that is, incubate the protein at 37°C for 48h, and no obvious degradation and precipitation were observed. The loss rate is less than 5% within the expiration date under appropriate storage condition.
Restrictions:	For Research Use only

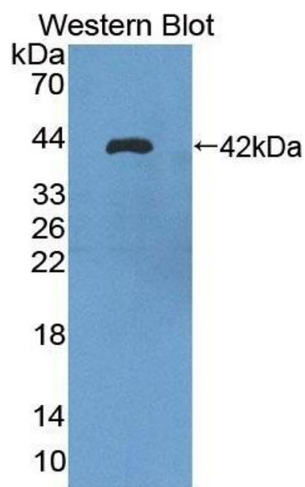
Handling

Format:	Liquid
Buffer:	0.01M PBS, pH 7.4, containing 0.05 % Proclin-300, 50 % glycerol.
Preservative:	ProClin
Precaution of Use:	This product contains ProClin: a POISONOUS AND HAZARDOUS SUBSTANCE which should be handled by trained staff only.
Storage:	4 °C,-20 °C
Storage Comment:	Store at 4°C for frequent use. Stored at -20°C in a manual defrost freezer for two year without detectable loss of activity. Avoid repeated freeze-thaw cycles.
Expiry Date:	24 months



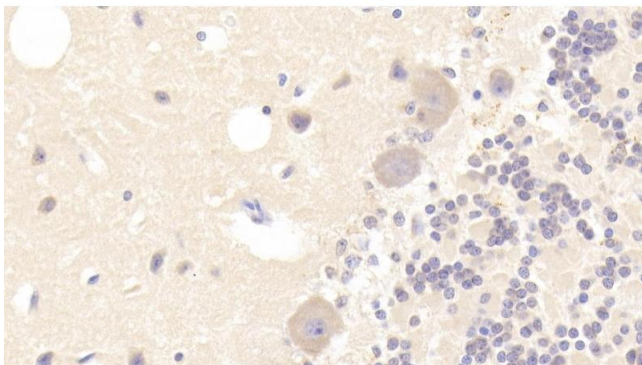
Immunohistochemistry

Image 1. Detection of TUBa3C in Human Liver Tissue using Polyclonal Antibody to Tubulin Alpha 3C (TUBa3C)



Western Blotting

Image 2. Detection of Recombinant TUBa3C, Human using Polyclonal Antibody to Tubulin Alpha 3C (TUBa3C)



Immunohistochemistry

Image 3. Detection of TUBa3C in Human Cerebellum Tissue using Polyclonal Antibody to Tubulin Alpha 3C (TUBa3C)