

Datasheet for ABIN744428
anti-NUMB antibody (pSer276)[Go to Product page](#)**1** Image**1** Publication

Overview

Quantity:	100 µL
Target:	NUMB
Binding Specificity:	pSer276
Reactivity:	Mouse
Host:	Rabbit
Clonality:	Polyclonal
Conjugate:	This NUMB antibody is un-conjugated
Application:	Western Blotting (WB), ELISA, Immunofluorescence (Cultured Cells) (IF (cc)), Immunocytochemistry (ICC), Immunofluorescence (Paraffin-embedded Sections) (IF (p)), Immunohistochemistry (Frozen Sections) (IHC (fro))

Product Details

Immunogen:	KLH conjugated synthetic phosphopeptide derived from human Numb around the phosphorylation site of Ser276
Isotype:	IgG
Specificity:	This phosphorylation site is homologous to that of Ser276 in Mouse and Ser275 in Rat.
Cross-Reactivity:	Mouse
Predicted Reactivity:	Human,Rat,Dog,Cow,Sheep,Pig,Horse,Chicken,Rabbit
Purification:	Purified by Protein A.

Target Details

Target:	NUMB
Alternative Name:	Numb (NUMB Products)
Background:	<p>Synonyms: S171, C14orf41, c14_5527, Protein numb homolog, h-Numb, Protein S171, NUMB</p> <p>Background: Plays a role in the process of neurogenesis. Required throughout embryonic neurogenesis to maintain neural progenitor cells, also called radial glial cells (RGCs), by allowing their daughter cells to choose progenitor over neuronal cell fate. Not required for the proliferation of neural progenitor cells before the onset of neurogenesis. Also involved postnatally in the subventricular zone (SVZ) neurogenesis by regulating SVZ neuroblasts survival and ependymal wall integrity. May also mediate local repair of brain ventricular wall damage.</p>
Gene ID:	8650
UniProt:	P49757
Pathways:	Cell-Cell Junction Organization

Application Details

Application Notes:	<p>WB 1:300-5000</p> <p>ELISA 1:500-1000</p> <p>IHC-F 1:100-500</p> <p>IF(IHC-P) 1:50-200</p> <p>IF(IHC-F) 1:50-200</p> <p>IF(ICC) 1:50-200</p> <p>ICC 1:100-500</p>
Restrictions:	For Research Use only

Handling

Format:	Liquid
Concentration:	1 µg/µL
Buffer:	0.01M TBS(pH 7.4) with 1 % BSA, 0.02 % Proclin300 and 50 % Glycerol.
Preservative:	ProClin
Precaution of Use:	This product contains ProClin: a POISONOUS AND HAZARDOUS SUBSTANCE, which should be handled by trained staff only.

Handling

Storage: 4 °C, -20 °C

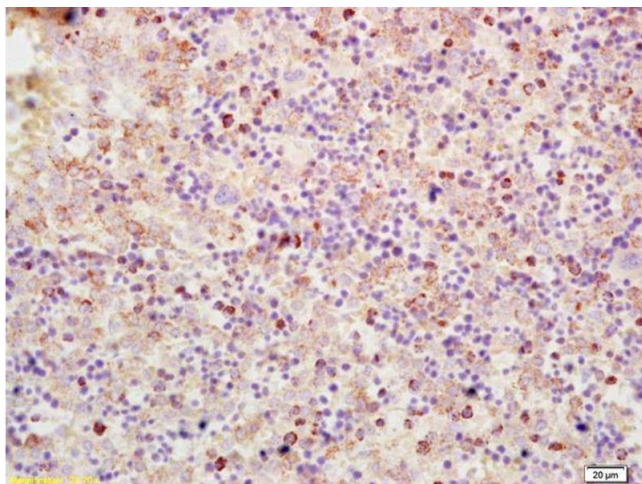
Storage Comment: Shipped at 4°C. Store at -20°C for one year. Avoid repeated freeze/thaw cycles.

Expiry Date: 12 months

Publications

Product cited in: Mah, Soloff, Hedrick, Mariani: "Atypical PKC- ι Controls Stem Cell Expansion via Regulation of the Notch Pathway." in: **Stem cell reports**, Vol. 5, Issue 5, pp. 866-80, (2015) ([PubMed](#)).

Images



Immunohistochemistry

Image 1. Formalin-fixed and paraffin embedded mouse embryo labeled with Anti-Phospho-Numb (Ser276) Polyclonal Antibody, Unconjugated (ABIN744428) at 1:200 followed by conjugation to the secondary antibody and DAB staining