

Datasheet for ABIN7444355  
**anti-KLRK1 antibody (AA 90-232)**

## 2 Images

[Go to Product page](#)

## Overview

Quantity:	100 µL
Target:	KLRK1
Binding Specificity:	AA 90-232
Reactivity:	Mouse
Host:	Rabbit
Clonality:	Polyclonal
Conjugate:	This KLRK1 antibody is un-conjugated
Application:	Western Blotting (WB), Immunohistochemistry (IHC), Immunoprecipitation (IP), Immunocytochemistry (ICC)

## Product Details

Purpose:	Polyclonal Antibody to Killer Cell Lectin Like Receptor Subfamily K, Member 1 (KLRK1)
Immunogen:	Recombinant Killer Cell Lectin Like Receptor Subfamily K, Member 1 (KLRK1) corresponding to Phe90~Val232 with N-terminal His Tag
Isotype:	IgG
Specificity:	The antibody is a rabbit polyclonal antibody raised against KLRK1. It has been selected for its ability to recognize KLRK1 in immunohistochemical staining and western blotting.
Cross-Reactivity:	Rat
Purification:	Antigen-specific affinity chromatography followed by Protein A affinity chromatography

## Target Details

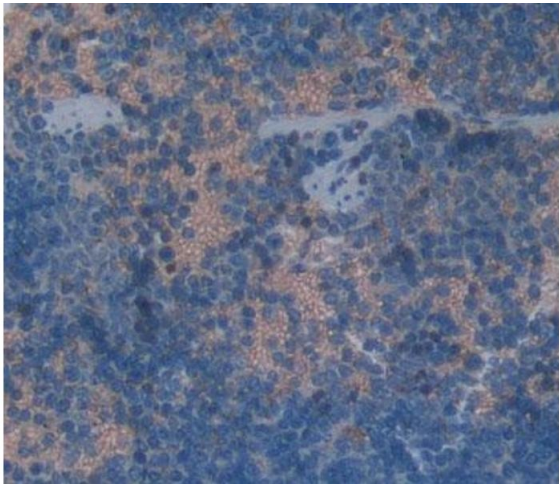
Target:	KLRK1
Alternative Name:	Killer Cell Lectin Like Receptor Subfamily K, Member 1 ( <a href="#">KLRK1 Products</a> )
Background:	CD314, KLR-K1, KLR, NKG2-D, NKG2-D Type II Integral Membrane Protein, NK cell receptor D, NKG2-D-activating NK receptor
Pathways:	<a href="#">Activation of Innate immune Response</a> , <a href="#">Cellular Response to Molecule of Bacterial Origin</a> , <a href="#">Regulation of Leukocyte Mediated Immunity</a> , <a href="#">Positive Regulation of Immune Effector Process</a>

## Application Details

Application Notes:	Western blotting: 0.5-2 µg/mL Immunohistochemistry: 5-20 µg/mL Immunocytochemistry: 5-20 µg/mL Optimal working dilutions must be determined by end user.
Comment:	The thermal stability is described by the loss rate. The loss rate was determined by accelerated thermal degradation test, that is, incubate the protein at 37°C for 48h, and no obvious degradation and precipitation were observed. The loss rate is less than 5% within the expiration date under appropriate storage condition.
Restrictions:	For Research Use only

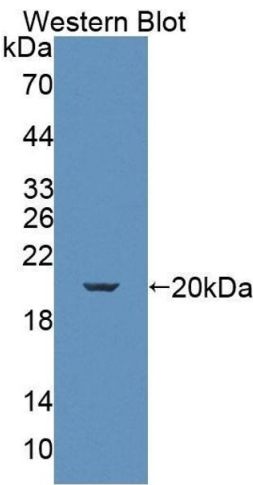
## Handling

Format:	Liquid
Buffer:	PBS, pH 7.4, containing 0.02 % Sodium azide, 50 % glycerol.
Preservative:	Sodium azide
Precaution of Use:	This product contains Sodium azide: a POISONOUS AND HAZARDOUS SUBSTANCE which should be handled by trained staff only.
Storage:	4 °C, -20 °C
Storage Comment:	Store at 4°C for frequent use. Stored at -20°C in a manual defrost freezer for two year without detectable loss of activity. Avoid repeated freeze-thaw cycles.
Expiry Date:	24 months



Immunohistochemistry

Image 1. #VALUE!



Western Blotting

Image 2. Detection of Recombinant KLRK1, Mouse using Polyclonal Antibody to Killer Cell Lectin Like Receptor Subfamily K, Member 1 (KLRK1)