

Datasheet for ABIN7444367
anti-KEL antibody (AA 49-358)[Go to Product page](#)

4 Images

Overview

Quantity:	100 µL
Target:	KEL
Binding Specificity:	AA 49-358
Reactivity:	Mouse
Host:	Rabbit
Clonality:	Polyclonal
Conjugate:	This KEL antibody is un-conjugated
Application:	Western Blotting (WB), Immunohistochemistry (IHC), Immunoprecipitation (IP), Immunocytochemistry (ICC)

Product Details

Purpose:	Polyclonal Antibody to Kell Protein (KEL)
Immunogen:	Recombinant Kell Protein (KEL) corresponding to Ile49~Leu358 with N-terminal His Tag
Isotype:	IgG
Specificity:	The antibody is a rabbit polyclonal antibody raised against KEL. It has been selected for its ability to recognize KEL in immunohistochemical staining and western blotting.
Cross-Reactivity:	Rat
Purification:	Antigen-specific affinity chromatography followed by Protein A affinity chromatography

Target Details

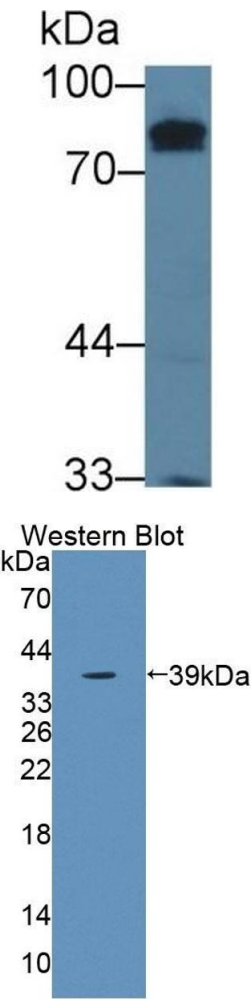
Target:	KEL
Alternative Name:	Kell Protein (KEL Products)
Background:	CD238, ECE3, Kell Blood Group, Metalloendopeptidase, Metallo-Endopeptidase, Kell blood group glycoprotein

Application Details

Application Notes:	Western blotting: 0.5-2 µg/mL Immunohistochemistry: 5-20 µg/mL Immunocytochemistry: 5-20 µg/mL Optimal working dilutions must be determined by end user.
Comment:	The thermal stability is described by the loss rate. The loss rate was determined by accelerated thermal degradation test, that is, incubate the protein at 37°C for 48h, and no obvious degradation and precipitation were observed. The loss rate is less than 5% within the expiration date under appropriate storage condition.
Restrictions:	For Research Use only

Handling

Format:	Liquid
Buffer:	PBS, pH 7.4, containing 0.02 % Sodium azide, 50 % glycerol.
Preservative:	Sodium azide
Precaution of Use:	This product contains Sodium azide: a POISONOUS AND HAZARDOUS SUBSTANCE which should be handled by trained staff only.
Storage:	4 °C, -20 °C
Storage Comment:	Store at 4°C for frequent use. Stored at -20°C in a manual defrost freezer for two year without detectable loss of activity. Avoid repeated freeze-thaw cycles.
Expiry Date:	24 months



Western Blotting

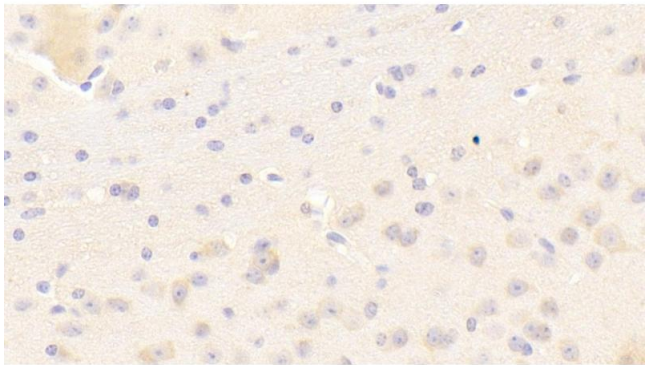
Image 1. Detection of KEL in Mouse Testis lysate using Polyclonal Antibody to Kell Protein (KEL)

Western Blotting

Image 2. Detection of Recombinant KEL, Mouse using Polyclonal Antibody to Kell Protein (KEL)

Immunohistochemistry

Image 3. Detection of KEL in Mouse Cerebrum Tissue using Polyclonal Antibody to Kell Protein (KEL)



Please check the [product details page](#) for more images. Overall 4 images are available for ABIN7444367.