



[Go to Product page](#)

Datasheet for ABIN7444445
anti-PTGER1 antibody (AA 23-184)

3 Images

Overview

Quantity:	100 µL
Target:	PTGER1
Binding Specificity:	AA 23-184
Reactivity:	Human
Host:	Rabbit
Clonality:	Polyclonal
Conjugate:	This PTGER1 antibody is un-conjugated
Application:	Western Blotting (WB), Immunohistochemistry (IHC), Immunocytochemistry (ICC), Immunoprecipitation (IP)

Product Details

Purpose:	Polyclonal Antibody to Prostaglandin E Receptor 1 (EP1)
Immunogen:	Recombinant Prostaglandin E Receptor 1 (EP1) corresponding to Val23~Pro184
Isotype:	IgG
Specificity:	The antibody is a rabbit polyclonal antibody raised against EP1. It has been selected for its ability to recognize EP1 in immunohistochemical staining and western blotting.
Cross-Reactivity:	Pig, Rat
Purification:	Antigen-specific affinity chromatography followed by Protein A affinity chromatography

Target Details

Target:	PTGER1
Alternative Name:	Prostaglandin E Receptor 1 (PTGER1 Products)
Background:	PTGER1, EP1, Prostanoid EP1 receptor, Prostaglandin E2 receptor EP1 subtype, PGE receptor EP1 subtype

Application Details

Application Notes:	Western blotting: 0.5-2 µg/mL Immunohistochemistry: 5-20 µg/mL Immunocytochemistry: 5-20 µg/mL Optimal working dilutions must be determined by end user.
Comment:	The thermal stability is described by the loss rate. The loss rate was determined by accelerated thermal degradation test, that is, incubate the protein at 37°C for 48h, and no obvious degradation and precipitation were observed. The loss rate is less than 5% within the expiration date under appropriate storage condition.
Restrictions:	For Research Use only

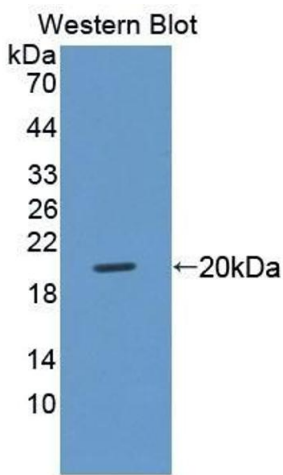
Handling

Format:	Liquid
Buffer:	0.01M PBS, pH 7.4, containing 0.05 % Proclin-300, 50 % glycerol.
Preservative:	ProClin
Precaution of Use:	This product contains ProClin: a POISONOUS AND HAZARDOUS SUBSTANCE which should be handled by trained staff only.
Storage:	4 °C,-20 °C
Storage Comment:	Store at 4°C for frequent use. Stored at -20°C in a manual defrost freezer for two year without detectable loss of activity. Avoid repeated freeze-thaw cycles.
Expiry Date:	24 months



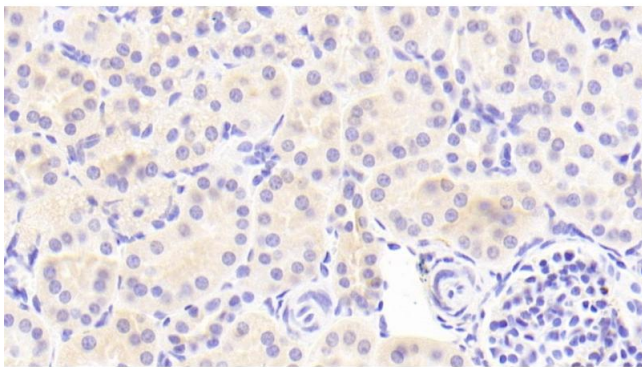
Western Blotting

Image 1. Detection of EP1 in Rat Kidney lysate using Polyclonal Antibody to Prostaglandin E Receptor 1 (EP1)



Western Blotting

Image 2. Detection of Recombinant EP1, Human using Polyclonal Antibody to Prostaglandin E Receptor 1 (EP1)



Immunohistochemistry

Image 3. Detection of EP1 in Human Kidney Tissue using Polyclonal Antibody to Prostaglandin E Receptor 1 (EP1)