



[Go to Product page](#)

Datasheet for ABIN7444577

anti-LUC7-Like 3 antibody (AA 1-247)

5 Images

Overview

Quantity:	100 µL
Target:	LUC7-Like 3 (LUC7L3)
Binding Specificity:	AA 1-247
Reactivity:	Human
Host:	Rabbit
Clonality:	Polyclonal
Conjugate:	This LUC7-Like 3 antibody is un-conjugated
Application:	Western Blotting (WB), Immunoprecipitation (IP), Immunohistochemistry (IHC), Immunocytochemistry (ICC)

Product Details

Purpose:	Polyclonal Antibody to Cisplatin Resistance Associated Overexpressed Protein (CROP)
Immunogen:	Recombinant Cisplatin Resistance Associated Overexpressed Protein (CROP) corresponding to Met1~Leu247
Isotype:	IgG
Specificity:	The antibody is a rabbit polyclonal antibody raised against CROP. It has been selected for its ability to recognize CROP in immunohistochemical staining and western blotting.
Cross-Reactivity:	Mouse, Pig, Rat
Purification:	Antigen-specific affinity chromatography followed by Protein A affinity chromatography

Target Details

Target:	LUC7-Like 3 (LUC7L3)
Alternative Name:	Cisplatin Resistance Associated Overexpressed Protein (LUC7L3 Products)
Background:	LUC7L3, LUC7A, CREAP-1, CRA, CRE-Associated Protein, Luc7-like protein 3, Okadaic acid-inducible phosphoprotein OA48-18, cAMP regulatory element-associated protein 1
Pathways:	Ribonucleoprotein Complex Subunit Organization

Application Details

Application Notes:	Western blotting: 0.5-2 µg/mL Immunohistochemistry: 5-20 µg/mL Immunocytochemistry: 5-20 µg/mL Optimal working dilutions must be determined by end user.
Comment:	The thermal stability is described by the loss rate. The loss rate was determined by accelerated thermal degradation test, that is, incubate the protein at 37°C for 48h, and no obvious degradation and precipitation were observed. The loss rate is less than 5% within the expiration date under appropriate storage condition.
Restrictions:	For Research Use only

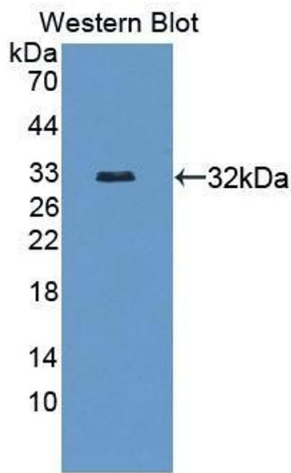
Handling

Format:	Liquid
Buffer:	PBS, pH 7.4, containing 0.02 % Sodium azide, 50 % glycerol.
Preservative:	Sodium azide
Precaution of Use:	This product contains Sodium azide: a POISONOUS AND HAZARDOUS SUBSTANCE which should be handled by trained staff only.
Storage:	4 °C,-20 °C
Storage Comment:	Store at 4°C for frequent use. Stored at -20°C in a manual defrost freezer for two year without detectable loss of activity. Avoid repeated freeze-thaw cycles.
Expiry Date:	24 months



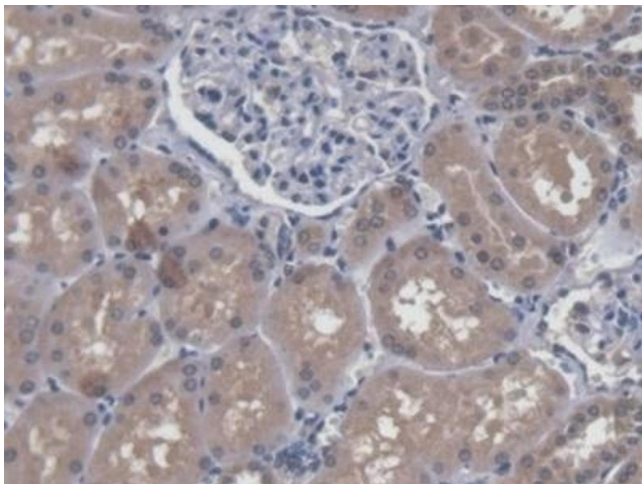
Western Blotting

Image 1. Detection of CROP in Human Hela cell lysate using Polyclonal Antibody to Cisplatin Resistance Associated Overexpressed Protein (CROP)



Western Blotting

Image 2. Detection of Recombinant CROP, Human using Polyclonal Antibody to Cisplatin Resistance Associated Overexpressed Protein (CROP)



Immunohistochemistry

Image 3. #VALUE!

Please check the [product details page](#) for more images. Overall 5 images are available for ABIN7444577.