

Datasheet for ABIN7444625
anti-MRPL1 antibody (AA 141-323)

3 Images

[Go to Product page](#)

Overview

Quantity:	100 µL
Target:	MRPL1
Binding Specificity:	AA 141-323
Reactivity:	Rat
Host:	Rabbit
Clonality:	Polyclonal
Conjugate:	This MRPL1 antibody is un-conjugated
Application:	Western Blotting (WB), Immunohistochemistry (IHC), Immunoprecipitation (IP), Immunocytochemistry (ICC)

Product Details

Purpose:	Polyclonal Antibody to Mitochondrial Ribosomal Protein L1 (MRPL1)
Immunogen:	Recombinant Mitochondrial Ribosomal Protein L1 (MRPL1) corresponding to Pro141~Ala323
Isotype:	IgG
Specificity:	The antibody is a rabbit polyclonal antibody raised against MRPL1. It has been selected for its ability to recognize MRPL1 in immunohistochemical staining and western blotting.
Cross-Reactivity:	Mouse
Purification:	Antigen-specific affinity chromatography followed by Protein A affinity chromatography

Target Details

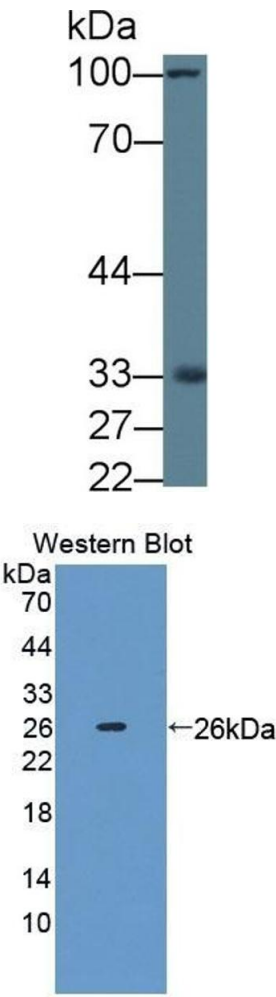
Target:	MRPL1
Alternative Name:	Mitochondrial Ribosomal Protein L1 (MRPL1 Products)
Background:	MRP-L1, BM022, L1mt, 39S Ribosomal Protein L1,Mitochondrial

Application Details

Application Notes:	Western blotting: 0.5-2 µg/mL Immunohistochemistry: 5-20 µg/mL Immunocytochemistry: 5-20 µg/mL Optimal working dilutions must be determined by end user.
Comment:	The thermal stability is described by the loss rate. The loss rate was determined by accelerated thermal degradation test, that is, incubate the protein at 37°C for 48h, and no obvious degradation and precipitation were observed. The loss rate is less than 5% within the expiration date under appropriate storage condition.
Restrictions:	For Research Use only

Handling

Format:	Liquid
Buffer:	0.01M PBS, pH 7.4, containing 0.05 % Proclin-300, 50 % glycerol.
Preservative:	ProClin
Precaution of Use:	This product contains ProClin: a POISONOUS AND HAZARDOUS SUBSTANCE which should be handled by trained staff only.
Storage:	4 °C,-20 °C
Storage Comment:	Store at 4°C for frequent use. Stored at -20°C in a manual defrost freezer for two year without detectable loss of activity. Avoid repeated freeze-thaw cycles.
Expiry Date:	24 months

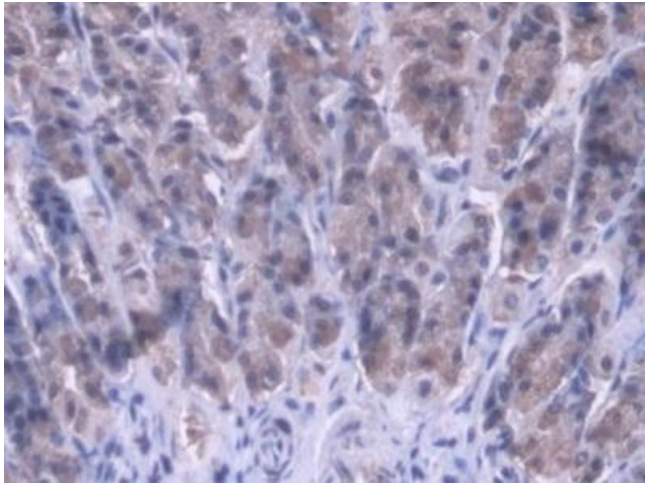


Western Blotting

Image 1. Detection of MRPL1 in Rat Liver lysate using Polyclonal Antibody to Mitochondrial Ribosomal Protein L1 (MRPL1)

Western Blotting

Image 2. Detection of Recombinant MRPL1, Rat using Polyclonal Antibody to Mitochondrial Ribosomal Protein L1 (MRPL1)



Immunohistochemistry

Image 3. #VALUE!