

Datasheet for ABIN7444649
anti-Symplekin antibody (AA 1-347)

3 Images

[Go to Product page](#)

Overview

Quantity:	100 µL
Target:	Symplekin (SYMPK)
Binding Specificity:	AA 1-347
Reactivity:	Human
Host:	Rabbit
Clonality:	Polyclonal
Conjugate:	This Symplekin antibody is un-conjugated
Application:	Western Blotting (WB), Immunohistochemistry (IHC), Immunoprecipitation (IP), Immunocytochemistry (ICC)

Product Details

Purpose:	Polyclonal Antibody to Symplekin (SYMPK)
Immunogen:	Recombinant Symplekin (SYMPK) corresponding to Met1~Lys347
Isotype:	IgG
Specificity:	The antibody is a rabbit polyclonal antibody raised against SYMPK. It has been selected for its ability to recognize SYMPK in immunohistochemical staining and western blotting.
Cross-Reactivity:	Mouse, Rat
Purification:	Antigen-specific affinity chromatography followed by Protein A affinity chromatography

Target Details

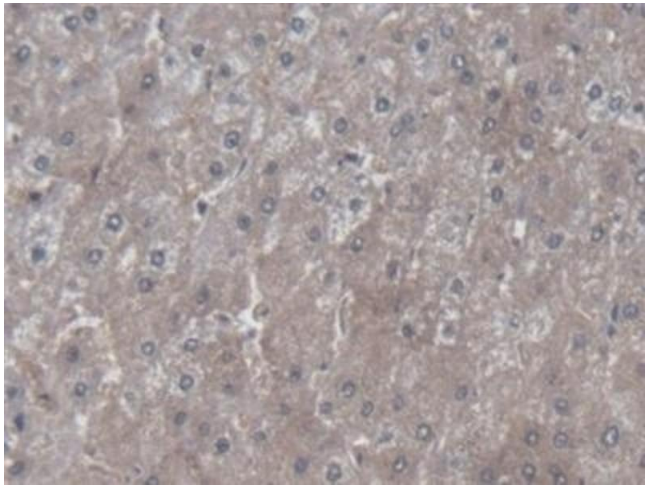
Target:	Symplekin (SYMPK)
Alternative Name:	Symplekin (SYMPK Products)
Background:	SPK, SYM

Application Details

Application Notes:	Western blotting: 0.5-2 µg/mL Immunohistochemistry: 5-20 µg/mL Immunocytochemistry: 5-20 µg/mL Optimal working dilutions must be determined by end user.
Comment:	The thermal stability is described by the loss rate. The loss rate was determined by accelerated thermal degradation test, that is, incubate the protein at 37°C for 48h, and no obvious degradation and precipitation were observed. The loss rate is less than 5% within the expiration date under appropriate storage condition.
Restrictions:	For Research Use only

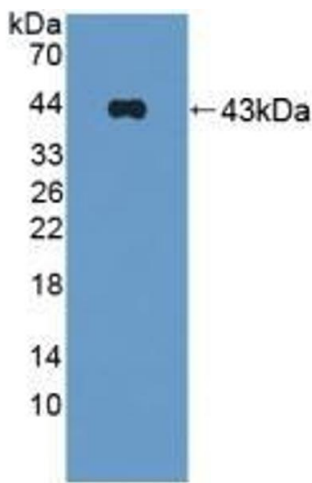
Handling

Format:	Liquid
Buffer:	0.01M PBS, pH 7.4, containing 0.05 % Proclin-300, 50 % glycerol.
Preservative:	ProClin
Precaution of Use:	This product contains ProClin: a POISONOUS AND HAZARDOUS SUBSTANCE which should be handled by trained staff only.
Storage:	4 °C,-20 °C
Storage Comment:	Store at 4°C for frequent use. Stored at -20°C in a manual defrost freezer for two year without detectable loss of activity. Avoid repeated freeze-thaw cycles.
Expiry Date:	24 months



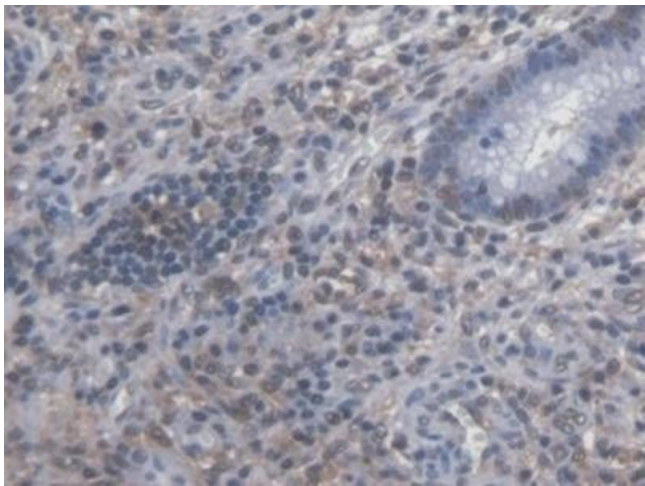
Immunohistochemistry

Image 1. Detection of SYMPK in Human Liver Tissue using Polyclonal Antibody to Symplekin (SYMPK)



Western Blotting

Image 2. Detection of Recombinant SYMPK, Human using Polyclonal Antibody to Symplekin (SYMPK)



Immunohistochemistry

Image 3. Detection of SYMPK in Human Colorectal cancer Tissue using Polyclonal Antibody to Symplekin (SYMPK)