



[Go to Product page](#)

Datasheet for ABIN7444715
anti-PPP1CA antibody (AA 2-330)

7 Images

Overview

Quantity:	100 µL
Target:	PPP1CA
Binding Specificity:	AA 2-330
Reactivity:	Human
Host:	Rabbit
Clonality:	Polyclonal
Conjugate:	This PPP1CA antibody is un-conjugated
Application:	Western Blotting (WB), Immunohistochemistry (IHC), Immunocytochemistry (ICC), Immunoprecipitation (IP)

Product Details

Purpose:	Polyclonal Antibody to Protein Phosphatase 1, Catalytic Subunit Alpha Isoform (PPP1Ca)
Immunogen:	Recombinant Protein Phosphatase 1, Catalytic Subunit Alpha Isoform (PPP1Ca) corresponding to Ser2~Lys330 with N-terminal His Tag
Isotype:	IgG
Specificity:	The antibody is a rabbit polyclonal antibody raised against PPP1Ca. It has been selected for its ability to recognize PPP1Ca in immunohistochemical staining and western blotting.
Cross-Reactivity:	Mouse, Pig, Rat
Purification:	Antigen-specific affinity chromatography followed by Protein A affinity chromatography

Target Details

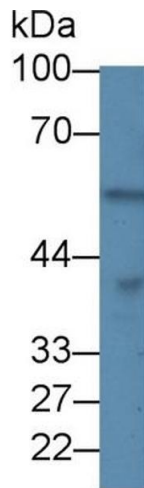
Target:	PPP1CA
Alternative Name:	Protein Phosphatase 1, Catalytic Subunit Alpha Isoform (PPP1CA Products)
Background:	PPP1C-A, PPP1-CA, PP-1A, PPP1A, Serine/Threonine-Protein Phosphatase PP1-Alpha Catalytic Subunit
Pathways:	M Phase , Cellular Glucan Metabolic Process , Regulation of Carbohydrate Metabolic Process , Lipid Metabolism

Application Details

Application Notes:	Western blotting: 0.5-2 µg/mL Immunohistochemistry: 5-20 µg/mL Immunocytochemistry: 5-20 µg/mL Optimal working dilutions must be determined by end user.
Comment:	The thermal stability is described by the loss rate. The loss rate was determined by accelerated thermal degradation test, that is, incubate the protein at 37°C for 48h, and no obvious degradation and precipitation were observed. The loss rate is less than 5% within the expiration date under appropriate storage condition.
Restrictions:	For Research Use only

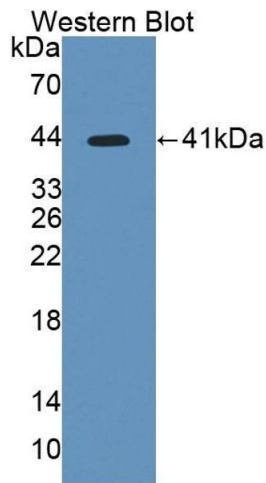
Handling

Format:	Liquid
Buffer:	PBS, pH 7.4, containing 0.02 % Sodium azide, 50 % glycerol.
Preservative:	Sodium azide
Precaution of Use:	This product contains Sodium azide: a POISONOUS AND HAZARDOUS SUBSTANCE which should be handled by trained staff only.
Storage:	4 °C, -20 °C
Storage Comment:	Store at 4°C for frequent use. Stored at -20°C in a manual defrost freezer for two year without detectable loss of activity. Avoid repeated freeze-thaw cycles.
Expiry Date:	24 months



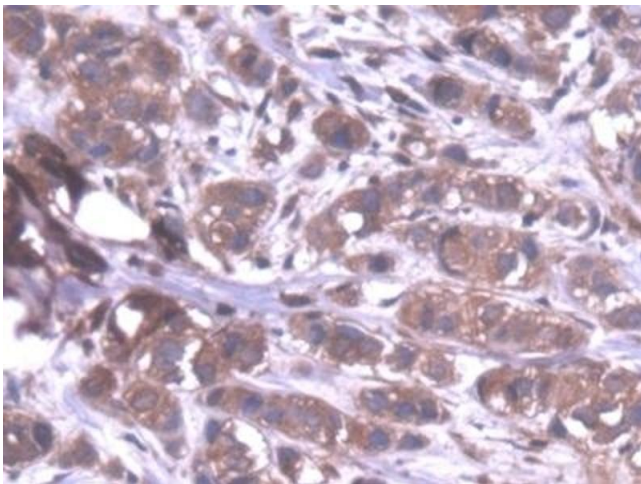
Western Blotting

Image 1. Detection of PPP1Ca in Human Lung lysate using Polyclonal Antibody to Protein Phosphatase 1, Catalytic Subunit Alpha Isoform (PPP1Ca)



Western Blotting

Image 2. Detection of Recombinant PPP1Ca, Human using Polyclonal Antibody to Protein Phosphatase 1, Catalytic Subunit Alpha Isoform (PPP1Ca)



Immunohistochemistry

Image 3. Detection of PPP1Ca in Human Breast cancer Tissue using Polyclonal Antibody to Protein Phosphatase 1, Catalytic Subunit Alpha Isoform (PPP1Ca)

Please check the [product details page](#) for more images. Overall 7 images are available for ABIN7444715.