

Datasheet for ABIN7444757  
**anti-alpha Adducin antibody (AA 388-560)**

## 6 Images

[Go to Product page](#)

## Overview

Quantity:	100 µL
Target:	alpha Adducin (ADD1)
Binding Specificity:	AA 388-560
Reactivity:	Mouse
Host:	Rabbit
Clonality:	Polyclonal
Conjugate:	This alpha Adducin antibody is un-conjugated
Application:	Western Blotting (WB), Immunohistochemistry (IHC), Immunoprecipitation (IP), Immunocytochemistry (ICC)

## Product Details

Purpose:	Polyclonal Antibody to Alpha Adducin (ADD1)
Immunogen:	Recombinant Alpha Adducin (ADD1) corresponding to Gly388~Gly560
Isotype:	IgG
Specificity:	The antibody is a rabbit polyclonal antibody raised against ADD1. It has been selected for its ability to recognize ADD1 in immunohistochemical staining and western blotting.
Cross-Reactivity:	Human, Rat
Purification:	Antigen-specific affinity chromatography followed by Protein A affinity chromatography

## Target Details

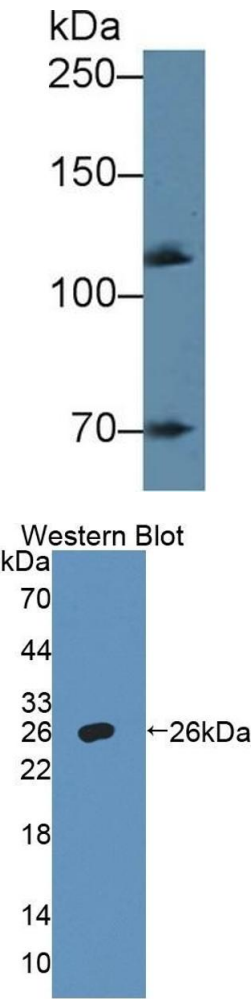
Target:	alpha Adducin (ADD1)
Alternative Name:	Alpha Adducin ( <a href="#">ADD1 Products</a> )
Background:	ADDA, Adducin 1, Erythrocyte adducin subunit alpha
Pathways:	<a href="#">Negative Regulation of Hormone Secretion</a> , <a href="#">Regulation of Actin Filament Polymerization</a> , <a href="#">Regulation of Lipid Metabolism by PPARalpha</a> , <a href="#">ER-Nucleus Signaling</a>

## Application Details

Application Notes:	Western blotting: 0.5-2 µg/mL Immunohistochemistry: 5-20 µg/mL Immunocytochemistry: 5-20 µg/mL Optimal working dilutions must be determined by end user.
Comment:	The thermal stability is described by the loss rate. The loss rate was determined by accelerated thermal degradation test, that is, incubate the protein at 37°C for 48h, and no obvious degradation and precipitation were observed. The loss rate is less than 5% within the expiration date under appropriate storage condition.
Restrictions:	For Research Use only

## Handling

Format:	Liquid
Buffer:	PBS, pH 7.4, containing 0.02 % Sodium azide, 50 % glycerol.
Preservative:	Sodium azide
Precaution of Use:	This product contains Sodium azide: a POISONOUS AND HAZARDOUS SUBSTANCE which should be handled by trained staff only.
Storage:	4 °C,-20 °C
Storage Comment:	Store at 4°C for frequent use. Stored at -20°C in a manual defrost freezer for two year without detectable loss of activity. Avoid repeated freeze-thaw cycles.
Expiry Date:	24 months

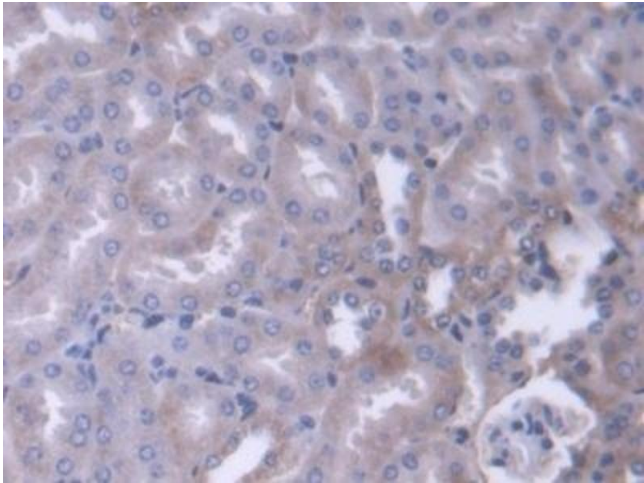


**Western Blotting**

**Image 1.** Detection of ADD1 in Mouse Cerebrum lysate using Polyclonal Antibody to Alpha Adducin (ADD1)

**Western Blotting**

**Image 2.** Detection of Recombinant ADD1, Mouse using Polyclonal Antibody to Alpha Adducin (ADD1)



**Immunohistochemistry**

**Image 3.** Detection of ADD1 in Mouse Kidney Tissue using Polyclonal Antibody to Alpha Adducin (ADD1)

Please check the [product details page](#) for more images. Overall 6 images are available for ABIN7444757.