



[Go to Product page](#)

Datasheet for ABIN7444826

## anti-Luteinizing Hormone antibody

### 1 Image

#### Overview

Quantity:	100 µL
Target:	Luteinizing Hormone (LH)
Reactivity:	Human
Host:	Rabbit
Clonality:	Polyclonal
Conjugate:	This Luteinizing Hormone antibody is un-conjugated
Application:	Western Blotting (WB), Immunohistochemistry (IHC), Immunocytochemistry (ICC), Immunoprecipitation (IP)

#### Product Details

Purpose:	Polyclonal Antibody to Luteinizing Hormone (LH)
Immunogen:	OVA Conjugated Luteinizing Hormone (LH)
Isotype:	IgG
Specificity:	The antibody is a rabbit polyclonal antibody raised against LH. It has been selected for its ability to recognize LH in immunohistochemical staining and western blotting.
Purification:	Antigen-specific affinity chromatography followed by Protein A affinity chromatography

#### Target Details

Target:	Luteinizing Hormone (LH)
Alternative Name:	Luteinizing Hormone ( <a href="#">LH Products</a> )

## Target Details

---

Background: ICSH, Lutropin, Interstitial Cell Stimulating Hormone

## Application Details

---

Application Notes: Western blotting: 0.5-2 µg/mL  
1:200-900 Immunohistochemistry: 5-20 µg/mL  
1:20-90 Immunocytochemistry: 5-20 µg/mL  
1:20-90 Optimal working dilutions must be determined by end user.

Comment: The thermal stability is described by the loss rate. The loss rate was determined by accelerated thermal degradation test, that is, incubate the protein at 37°C for 48h, and no obvious degradation and precipitation were observed. The loss rate is less than 5% within the expiration date under appropriate storage condition.

Restrictions: For Research Use only

## Handling

---

Format: Liquid

Buffer: 0.01M PBS, pH 7.4, containing 0.05 % Proclin-300, 50 % glycerol.

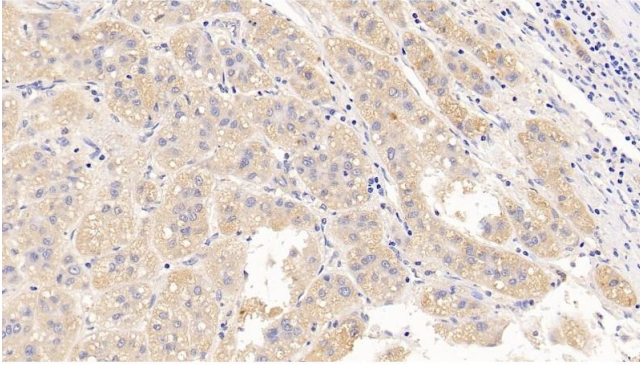
Preservative: ProClin

Precaution of Use: This product contains ProClin: a POISONOUS AND HAZARDOUS SUBSTANCE which should be handled by trained staff only.

Storage: 4 °C, -20 °C

Storage Comment: Store at 4°C for frequent use. Stored at -20°C in a manual defrost freezer for two year without detectable loss of activity. Avoid repeated freeze-thaw cycles.

Expiry Date: 24 months



### Immunohistochemistry

**Image 1.** Detection of LH in Human Liver cancer Tissue using Polyclonal Antibody to Luteinizing Hormone (LH)