

Datasheet for ABIN7444871  
**anti-NUTF2 antibody (AA 1-127)**[Go to Product page](#)

## 7 Images

## Overview

Quantity:	100 µL
Target:	NUTF2
Binding Specificity:	AA 1-127
Reactivity:	Human
Host:	Rabbit
Clonality:	Polyclonal
Conjugate:	This NUTF2 antibody is un-conjugated
Application:	Western Blotting (WB), Immunohistochemistry (IHC), Immunocytochemistry (ICC), Immunoprecipitation (IP)

## Product Details

Purpose:	Polyclonal Antibody to Nuclear Transport Factor 2 (NUTF2)
Immunogen:	Recombinant Nuclear Transport Factor 2 (NUTF2) corresponding to Met1~Gly127 with N-terminal His Tag
Isotype:	IgG
Specificity:	The antibody is a rabbit polyclonal antibody raised against NUTF2. It has been selected for its ability to recognize NUTF2 in immunohistochemical staining and western blotting.
Cross-Reactivity:	Mouse, Pig, Rat
Purification:	Antigen-specific affinity chromatography followed by Protein A affinity chromatography

## Target Details

Target:	NUTF2
Alternative Name:	Nuclear Transport Factor 2 ( <a href="#">NUTF2 Products</a> )
Background:	NTF2, PP15, Placental protein 15
Pathways:	<a href="#">Protein targeting to Nucleus</a> , <a href="#">SARS-CoV-2 Protein Interactome</a>

## Application Details

Application Notes:	Western blotting: 0.5-2 µg/mL Immunohistochemistry: 5-20 µg/mL Immunocytochemistry: 5-20 µg/mL Optimal working dilutions must be determined by end user.
Comment:	The thermal stability is described by the loss rate. The loss rate was determined by accelerated thermal degradation test, that is, incubate the protein at 37°C for 48h, and no obvious degradation and precipitation were observed. The loss rate is less than 5% within the expiration date under appropriate storage condition.
Restrictions:	For Research Use only

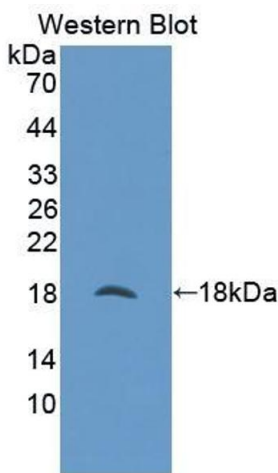
## Handling

Format:	Liquid
Buffer:	PBS, pH 7.4, containing 0.02 % Sodium azide, 50 % glycerol.
Preservative:	Sodium azide
Precaution of Use:	This product contains Sodium azide: a POISONOUS AND HAZARDOUS SUBSTANCE which should be handled by trained staff only.
Storage:	4 °C,-20 °C
Storage Comment:	Store at 4°C for frequent use. Stored at -20°C in a manual defrost freezer for two year without detectable loss of activity. Avoid repeated freeze-thaw cycles.
Expiry Date:	24 months



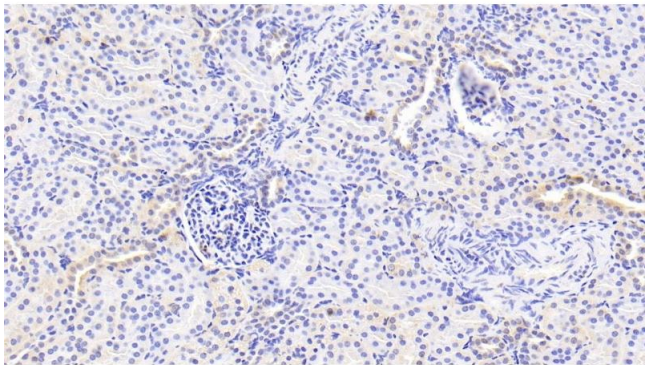
**Western Blotting**

**Image 1.** Detection of NUTF2 in Human K562 cell lysate using Polyclonal Antibody to Nuclear Transport Factor 2 (NUTF2)



**Western Blotting**

**Image 2.** Detection of Recombinant NUTF2, Human using Polyclonal Antibody to Nuclear Transport Factor 2 (NUTF2)



**Immunohistochemistry**

**Image 3.** Detection of NUTF2 in Human Kidney Tissue using Polyclonal Antibody to Nuclear Transport Factor 2 (NUTF2)

Please check the [product details page](#) for more images. Overall 7 images are available for ABIN7444871.