

Datasheet for ABIN7444883
anti-SCEL antibody (AA 519-685)[Go to Product page](#)

3 Images

Overview

Quantity:	100 µL
Target:	SCEL
Binding Specificity:	AA 519-685
Reactivity:	Human
Host:	Rabbit
Clonality:	Polyclonal
Conjugate:	This SCEL antibody is un-conjugated
Application:	Western Blotting (WB), Immunohistochemistry (IHC), Immunoprecipitation (IP), Immunocytochemistry (ICC)

Product Details

Purpose:	Polyclonal Antibody to Sciellin (SCEL)
Immunogen:	Recombinant Sciellin (SCEL) corresponding to Ile519~Lys685
Isotype:	IgG
Specificity:	The antibody is a rabbit polyclonal antibody raised against SCEL. It has been selected for its ability to recognize SCEL in immunohistochemical staining and western blotting.
Purification:	Antigen-specific affinity chromatography followed by Protein A affinity chromatography

Target Details

Target:	SCEL
---------	------

Target Details

Alternative Name: Sciellin ([SCEL Products](#))

Application Details

Application Notes: Western blotting: 0.2-2 µg/mL
1:250-2500 Immunohistochemistry: 5-20 µg/mL
1:25-100 Immunocytochemistry: 5-20 µg/mL
1:25-100 Optimal working dilutions must be determined by end user.

Comment: The thermal stability is described by the loss rate. The loss rate was determined by accelerated thermal degradation test, that is, incubate the protein at 37°C for 48h, and no obvious degradation and precipitation were observed. The loss rate is less than 5% within the expiration date under appropriate storage condition.

Restrictions: For Research Use only

Handling

Format: Liquid

Buffer: 0.01M PBS, pH 7.4, containing 0.05 % Proclin-300, 50 % glycerol.

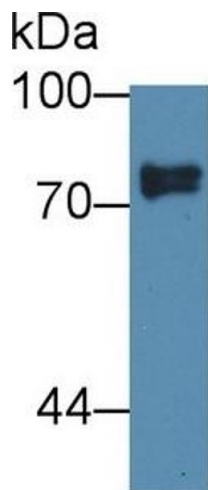
Preservative: ProClin

Precaution of Use: This product contains ProClin: a POISONOUS AND HAZARDOUS SUBSTANCE which should be handled by trained staff only.

Storage: 4 °C, -20 °C

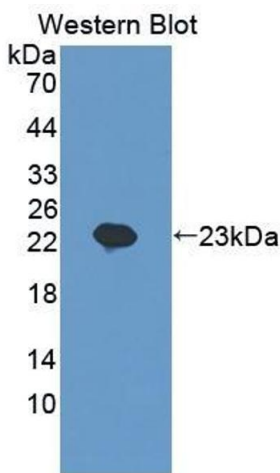
Storage Comment: Store at 4°C for frequent use. Stored at -20°C in a manual defrost freezer for two year without detectable loss of activity. Avoid repeated freeze-thaw cycles.

Expiry Date: 24 months



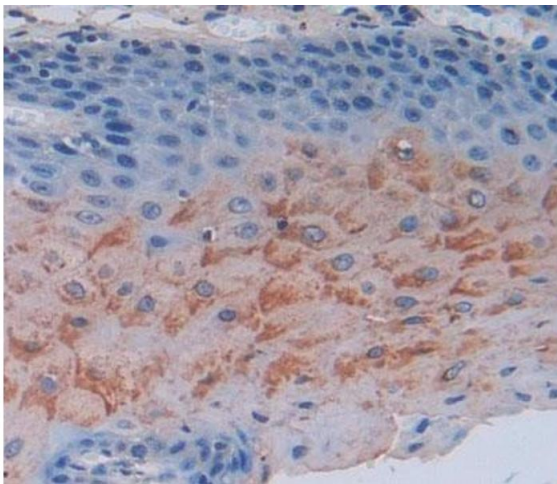
Western Blotting

Image 1. Detection of SCEL in Human Lung lysate using Polyclonal Antibody to Sciellin (SCEL)



Western Blotting

Image 2. Detection of Recombinant SCEL, Human using Polyclonal Antibody to Sciellin (SCEL)



Immunohistochemistry

Image 3. #VALUE!