

Datasheet for ABIN7444892
anti-CLTA antibody (AA 5-234)[Go to Product page](#)

3 Images

Overview

Quantity:	100 µL
Target:	CLTA
Binding Specificity:	AA 5-234
Reactivity:	Mouse
Host:	Rabbit
Clonality:	Polyclonal
Conjugate:	This CLTA antibody is un-conjugated
Application:	Western Blotting (WB), Immunohistochemistry (IHC), Immunoprecipitation (IP), Immunocytochemistry (ICC)

Product Details

Purpose:	Polyclonal Antibody to Clathrin, Light Polypeptide A (CLTA)
Immunogen:	Recombinant Clathrin, Light Polypeptide A (CLTA) corresponding to Asp5~Val234
Isotype:	IgG
Specificity:	The antibody is a rabbit polyclonal antibody raised against CLTA. It has been selected for its ability to recognize CLTA in immunohistochemical staining and western blotting.
Cross-Reactivity:	Human, Rat
Purification:	Antigen-specific affinity chromatography followed by Protein A affinity chromatography

Target Details

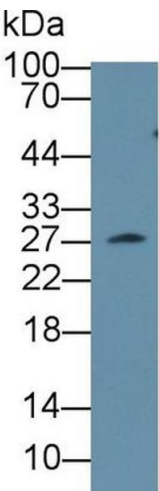
Target:	CLTA
Alternative Name:	Clathrin, Light Polypeptide A (CLTA Products)
Background:	Lca
Pathways:	EGFR Signaling Pathway , Neurotrophin Signaling Pathway , EGFR Downregulation

Application Details

Application Notes:	Western blotting: 0.5-2 µg/mL 1:300-1200 Immunohistochemistry: 5-20 µg/mL 1:30-120 Immunocytochemistry: 5-20 µg/mL 1:30-120 Optimal working dilutions must be determined by end user.
Comment:	The thermal stability is described by the loss rate. The loss rate was determined by accelerated thermal degradation test, that is, incubate the protein at 37°C for 48h, and no obvious degradation and precipitation were observed. The loss rate is less than 5% within the expiration date under appropriate storage condition.
Restrictions:	For Research Use only

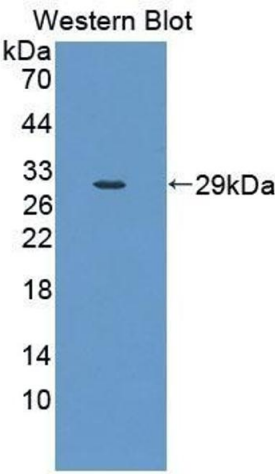
Handling

Format:	Liquid
Buffer:	0.01M PBS, pH 7.4, containing 0.05 % Proclin-300, 50 % glycerol.
Preservative:	ProClin
Precaution of Use:	This product contains ProClin: a POISONOUS AND HAZARDOUS SUBSTANCE which should be handled by trained staff only.
Storage:	4 °C, -20 °C
Storage Comment:	Store at 4°C for frequent use. Stored at -20°C in a manual defrost freezer for two year without detectable loss of activity. Avoid repeated freeze-thaw cycles.
Expiry Date:	24 months



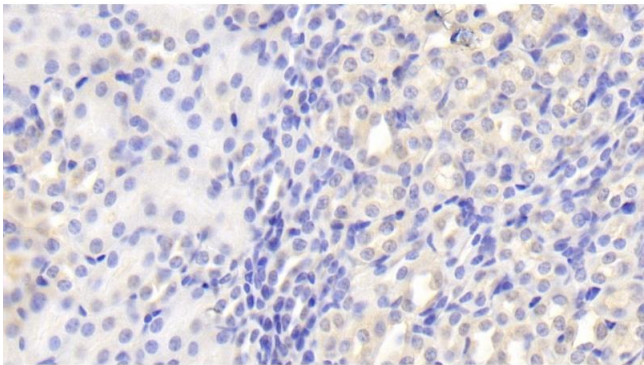
Western Blotting

Image 1. Detection of CLTA in Mouse Serum using Polyclonal Antibody to Clathrin, Light Polypeptide A (CLTA)



Western Blotting

Image 2. Detection of Recombinant CLTA, Mouse using Polyclonal Antibody to Clathrin, Light Polypeptide A (CLTA)



Immunohistochemistry

Image 3. Detection of CLTA in Mouse Kidney Tissue using Polyclonal Antibody to Clathrin, Light Polypeptide A (CLTA)