

Datasheet for ABIN7444904

anti-MAP1B antibody (AA 2207-2468)[Go to Product page](#)

4 Images

Overview

Quantity:	100 µL
Target:	MAP1B
Binding Specificity:	AA 2207-2468
Reactivity:	Human
Host:	Rabbit
Clonality:	Polyclonal
Conjugate:	This MAP1B antibody is un-conjugated
Application:	Immunohistochemistry (IHC), Western Blotting (WB), Immunoprecipitation (IP), Immunocytochemistry (ICC)

Product Details

Purpose:	Polyclonal Antibody to Microtubule Associated Protein 1B (MAP1B)
Immunogen:	Recombinant Microtubule Associated Protein 1B (MAP1B) corresponding to Asp2207~Leu2468 with N-terminal His Tag
Isotype:	IgG
Specificity:	The antibody is a rabbit polyclonal antibody raised against MAP1B. It has been selected for its ability to recognize MAP1B in immunohistochemical staining and western blotting.
Cross-Reactivity:	Mouse, Rat
Purification:	Antigen-specific affinity chromatography followed by Protein A affinity chromatography

Target Details

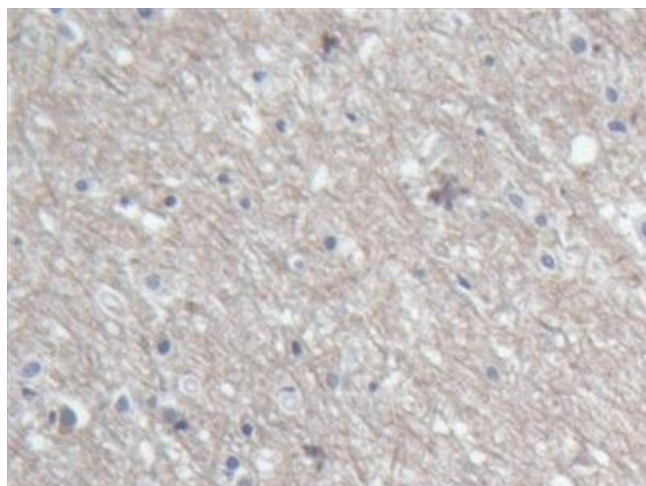
Target:	MAP1B
Alternative Name:	Microtubule Associated Protein 1B (MAP1B Products)
Background:	FUTSCH, MAP5
Pathways:	Microtubule Dynamics, Regulation of Cell Size

Application Details

Application Notes:	Western blotting: 0.5-2 µg/mL 1:120-480 Immunohistochemistry: 5-20 µg/mL 1:12-48 Immunocytochemistry: 5-20 µg/mL 1:12-48 Optimal working dilutions must be determined by end user.
Comment:	The thermal stability is described by the loss rate. The loss rate was determined by accelerated thermal degradation test, that is, incubate the protein at 37°C for 48h, and no obvious degradation and precipitation were observed. The loss rate is less than 5% within the expiration date under appropriate storage condition.
Restrictions:	For Research Use only

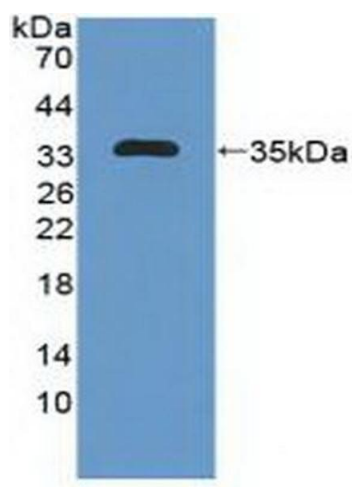
Handling

Format:	Liquid
Buffer:	0.01M PBS, pH 7.4, containing 0.05 % Proclin-300, 50 % glycerol.
Preservative:	ProClin
Precaution of Use:	This product contains ProClin: a POISONOUS AND HAZARDOUS SUBSTANCE which should be handled by trained staff only.
Storage:	4 °C, -20 °C
Storage Comment:	Store at 4°C for frequent use. Stored at -20°C in a manual defrost freezer for two year without detectable loss of activity. Avoid repeated freeze-thaw cycles.
Expiry Date:	24 months



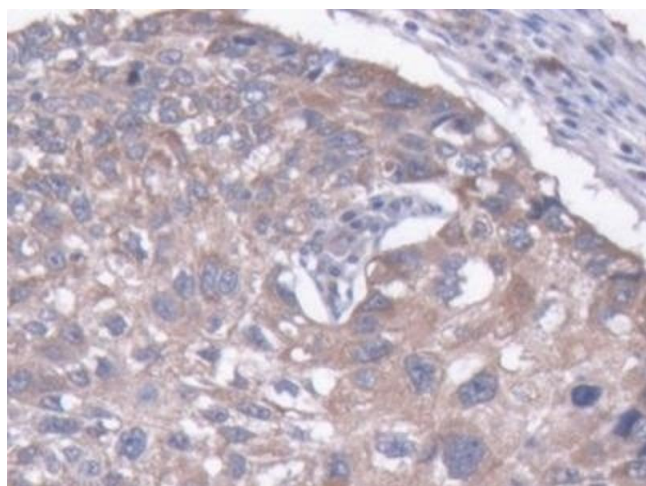
Immunohistochemistry

Image 1. Detection of MAP1B in Human Cerebrum Tissue using Polyclonal Antibody to Microtubule Associated Protein 1B (MAP1B)



Western Blotting

Image 2. Detection of Recombinant MAP1B, Human using Polyclonal Antibody to Microtubule Associated Protein 1B (MAP1B)



Immunohistochemistry

Image 3. Detection of MAP1B in Human Liver cancer Tissue using Polyclonal Antibody to Microtubule Associated Protein 1B (MAP1B)

Please check the [product details page](#) for more images. Overall 4 images are available for ABIN7444904.