



Datasheet for ABIN7444988
anti-ABCC6 antibody (AA 1260-1502)



[Go to Product page](#)

3 Images

Overview

Quantity:	100 µL
Target:	ABCC6
Binding Specificity:	AA 1260-1502
Reactivity:	Rat
Host:	Rabbit
Clonality:	Polyclonal
Conjugate:	This ABCC6 antibody is un-conjugated
Application:	Western Blotting (WB), Immunohistochemistry (IHC), Immunoprecipitation (IP), Immunocytochemistry (ICC)

Product Details

Purpose:	Polyclonal Antibody to ATP Binding Cassette Transporter C6 (ABCC6)
Immunogen:	Recombinant ATP Binding Cassette Transporter C6 (ABCC6) corresponding to Cys1260~Ala1502
Isotype:	IgG
Specificity:	The antibody is a rabbit polyclonal antibody raised against ABCC6. It has been selected for its ability to recognize ABCC6 in immunohistochemical staining and western blotting.
Cross-Reactivity:	Mouse
Purification:	Antigen-specific affinity chromatography followed by Protein A affinity chromatography

Target Details

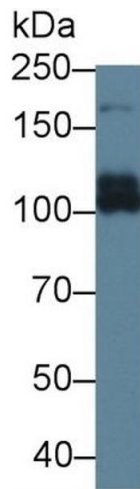
Target:	ABCC6
Alternative Name:	ATP Binding Cassette Transporter C6 (ABCC6 Products)
Background:	ABC-C6, ABC34, ARA, MLP1, MOATE, MRP6, PXE, PXE1, Pseudoxanthoma Elasticum

Application Details

Application Notes:	Western blotting: 0.5-2 µg/mL Immunohistochemistry: 5-20 µg/mL Immunocytochemistry: 5-20 µg/mL Optimal working dilutions must be determined by end user.
Comment:	The thermal stability is described by the loss rate. The loss rate was determined by accelerated thermal degradation test, that is, incubate the protein at 37°C for 48h, and no obvious degradation and precipitation were observed. The loss rate is less than 5% within the expiration date under appropriate storage condition.
Restrictions:	For Research Use only

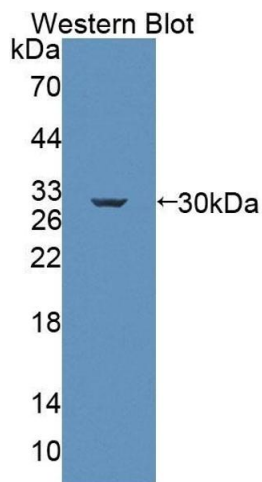
Handling

Format:	Liquid
Buffer:	PBS, pH 7.4, containing 0.02 % Sodium azide, 50 % glycerol.
Preservative:	Sodium azide
Precaution of Use:	This product contains Sodium azide: a POISONOUS AND HAZARDOUS SUBSTANCE which should be handled by trained staff only.
Storage:	4 °C, -20 °C
Storage Comment:	Store at 4°C for frequent use. Stored at -20°C in a manual defrost freezer for two year without detectable loss of activity. Avoid repeated freeze-thaw cycles.
Expiry Date:	24 months



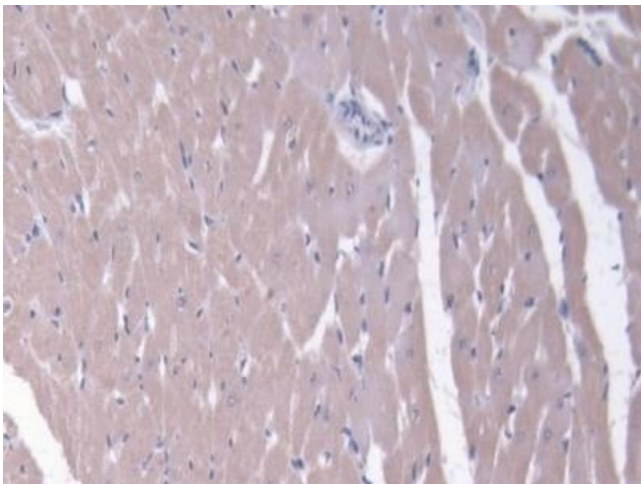
Western Blotting

Image 1. Detection of ABCC6 in Rat Liver lysate using Polyclonal Antibody to ATP Binding Cassette Transporter C6 (ABCC6)



Western Blotting

Image 2. Detection of Recombinant ABCC6, Rat using Polyclonal Antibody to ATP Binding Cassette Transporter C6 (ABCC6)



Immunohistochemistry

Image 3. Detection of ABCC6 in Rat Heart Tissue using Polyclonal Antibody to ATP Binding Cassette Transporter C6 (ABCC6)