

Datasheet for ABIN7445039  
**anti-C8A antibody (AA 21-300)**

## 3 Images

[Go to Product page](#)

## Overview

Quantity:	100 µL
Target:	C8A
Binding Specificity:	AA 21-300
Reactivity:	Mouse
Host:	Rabbit
Clonality:	Polyclonal
Conjugate:	This C8A antibody is un-conjugated
Application:	Western Blotting (WB), Immunohistochemistry (IHC), Immunocytochemistry (ICC), Immunoprecipitation (IP)

## Product Details

Purpose:	Polyclonal Antibody to Complement Component 8a (C8a)
Immunogen:	Recombinant Complement Component 8a (C8a) corresponding to Gln21~Gln300
Isotype:	IgG
Specificity:	The antibody is a rabbit polyclonal antibody raised against C8a. It has been selected for its ability to recognize C8a in immunohistochemical staining and western blotting.
Purification:	Antigen-specific affinity chromatography followed by Protein A affinity chromatography

## Target Details

Target:	C8A
---------	-----

## Target Details

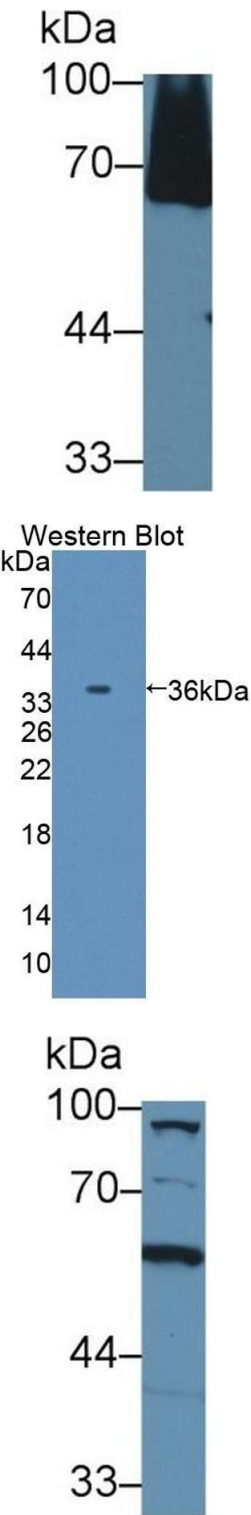
Alternative Name:	Complement Component 8a ( <a href="#">C8A Products</a> )
Background:	Complement Component 8,Alpha Polypeptide, Complement Component 8 Deficiency,Type I
Pathways:	<a href="#">Complement System</a>

## Application Details

Application Notes:	Western blotting: 0.5-2 µg/mL Immunohistochemistry: 5-20 µg/mL Immunocytochemistry: 5-20 µg/mL Optimal working dilutions must be determined by end user.
Comment:	The thermal stability is described by the loss rate. The loss rate was determined by accelerated thermal degradation test, that is, incubate the protein at 37°C for 48h, and no obvious degradation and precipitation were observed. The loss rate is less than 5% within the expiration date under appropriate storage condition.
Restrictions:	For Research Use only

## Handling

Format:	Liquid
Buffer:	PBS, pH 7.4, containing 0.02 % Sodium azide, 50 % glycerol.
Preservative:	Sodium azide
Precaution of Use:	This product contains Sodium azide: a POISONOUS AND HAZARDOUS SUBSTANCE which should be handled by trained staff only.
Storage:	4 °C,-20 °C
Storage Comment:	Store at 4°C for frequent use. Stored at -20°C in a manual defrost freezer for two year without detectable loss of activity. Avoid repeated freeze-thaw cycles.
Expiry Date:	24 months



**Western Blotting**

**Image 1.** Detection of C8a in Mouse Serum using Polyclonal Antibody to Complement Component 8a (C8a)

**Western Blotting**

**Image 2.** Detection of Recombinant C8a, Mouse using Polyclonal Antibody to Complement Component 8a (C8a)

**Western Blotting**

**Image 3.** Detection of C8a in Mouse Liver lysate using Polyclonal Antibody to Complement Component 8a (C8a)