

Datasheet for ABIN7445093

**anti-Leptin antibody (AA 22-167)****6** Images[Go to Product page](#)

## Overview

Quantity:	100 µL
Target:	Leptin (LEP)
Binding Specificity:	AA 22-167
Reactivity:	Human
Host:	Rabbit
Clonality:	Polyclonal
Conjugate:	This Leptin antibody is un-conjugated
Application:	Western Blotting (WB), Immunohistochemistry (IHC), Immunoprecipitation (IP), Immunocytochemistry (ICC)

## Product Details

Purpose:	Polyclonal Antibody to Leptin (LEP)
Immunogen:	Recombinant Leptin (LEP) corresponding to Val22~Cys167 with N-terminal His and GST Tag
Isotype:	IgG
Specificity:	The antibody is a rabbit polyclonal antibody raised against LEP. It has been selected for its ability to recognize LEP in immunohistochemical staining and western blotting.
Cross-Reactivity:	Mouse, Pig
Purification:	Antigen-specific affinity chromatography followed by Protein A affinity chromatography

## Target Details

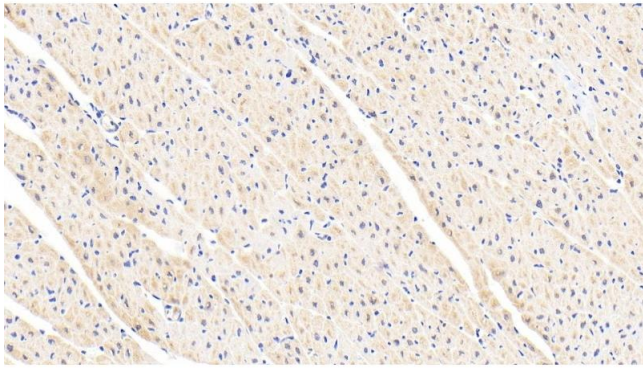
Target:	Leptin (LEP)
Alternative Name:	Leptin ( <a href="#">LEP Products</a> )
Background:	OB, OBS, Obesity Homolog, Obesity Factor, Obese Protein
Pathways:	<a href="#">JAK-STAT Signaling</a> , <a href="#">AMPK Signaling</a> , <a href="#">Hormone Transport</a> , <a href="#">Peptide Hormone Metabolism</a> , <a href="#">Hormone Activity</a> , <a href="#">Negative Regulation of Hormone Secretion</a> , <a href="#">Regulation of Carbohydrate Metabolic Process</a> , <a href="#">Feeding Behaviour</a> , <a href="#">Monocarboxylic Acid Catabolic Process</a>

## Application Details

Application Notes:	Western blotting: 0.5-2 µg/mL 1:500-2000 Immunohistochemistry: 5-20 µg/mL 1:50-200 Immunocytochemistry: 5-20 µg/mL 1:50-200 Optimal working dilutions must be determined by end user.
Comment:	The thermal stability is described by the loss rate. The loss rate was determined by accelerated thermal degradation test, that is, incubate the protein at 37°C for 48h, and no obvious degradation and precipitation were observed. The loss rate is less than 5% within the expiration date under appropriate storage condition.
Restrictions:	For Research Use only

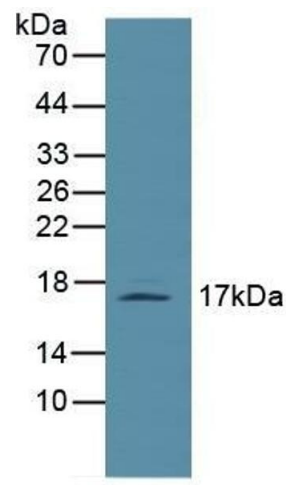
## Handling

Format:	Liquid
Buffer:	0.01M PBS, pH 7.4, containing 0.05 % Proclin-300, 50 % glycerol.
Preservative:	ProClin
Precaution of Use:	This product contains ProClin: a POISONOUS AND HAZARDOUS SUBSTANCE which should be handled by trained staff only.
Storage:	4 °C, -20 °C
Storage Comment:	Store at 4°C for frequent use. Stored at -20°C in a manual defrost freezer for two year without detectable loss of activity. Avoid repeated freeze-thaw cycles.
Expiry Date:	24 months



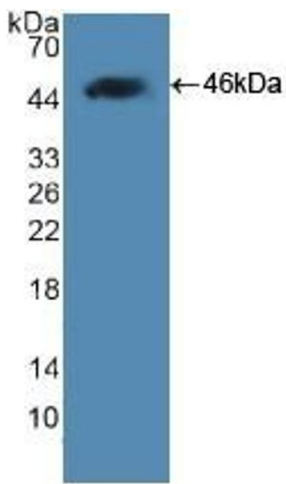
#### Immunohistochemistry

**Image 1.** Detection of LEP in Human Cardiac Muscle Tissue using Polyclonal Antibody to Leptin (LEP)



#### Western Blotting

**Image 2.** Detection of LEP in Mouse Lymph Node Tissue using Polyclonal Antibody to Leptin (LEP)



#### Western Blotting

**Image 3.** Detection of Recombinant LEP, Human using Polyclonal Antibody to Leptin (LEP)

Please check the [product details page](#) for more images. Overall 6 images are available for ABIN7445093.