

Datasheet for ABIN7445159  
**anti-PLA2G12A antibody (AA 26-192)**

## 3 Images

[Go to Product page](#)

## Overview

Quantity:	100 µL
Target:	PLA2G12A
Binding Specificity:	AA 26-192
Reactivity:	Mouse
Host:	Rabbit
Clonality:	Polyclonal
Conjugate:	This PLA2G12A antibody is un-conjugated
Application:	Western Blotting (WB), Immunohistochemistry (IHC), Immunoprecipitation (IP), Immunocytochemistry (ICC)

## Product Details

Purpose:	Polyclonal Antibody to Phospholipase A2, Group XII (PLA2G12)
Immunogen:	Recombinant Phospholipase A2, Group XII (PLA2G12) corresponding to Gln26~Leu192 with N-terminal His Tag
Isotype:	IgG
Specificity:	The antibody is a rabbit polyclonal antibody raised against PLA2G12. It has been selected for its ability to recognize PLA2G12 in immunohistochemical staining and western blotting.
Cross-Reactivity:	Human, Rat
Purification:	Antigen-specific affinity chromatography followed by Protein A affinity chromatography

## Target Details

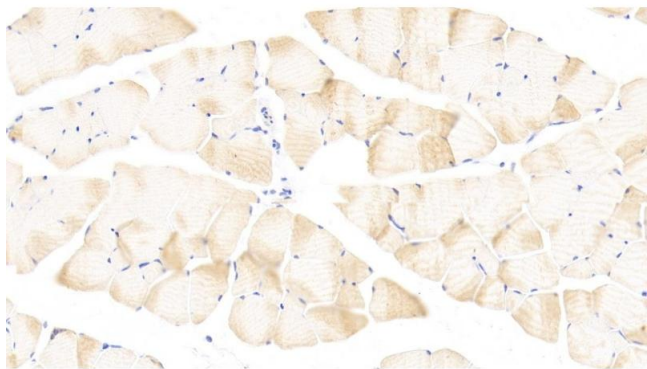
Target:	PLA2G12A
Alternative Name:	Phospholipase A2, Group XII ( <a href="#">PLA2G12A Products</a> )
Background:	PLA2G12A, sPLA2-XII, GXII sPLA2, Group XIIA secretory phospholipase A2, Phosphatidylcholine 2-acylhydrolase 12A
Pathways:	<a href="#">Inositol Metabolic Process</a>

## Application Details

Application Notes:	Western blotting: 0.5-2 µg/mL Immunohistochemistry: 5-20 µg/mL Immunocytochemistry: 5-20 µg/mL Optimal working dilutions must be determined by end user.
Comment:	The thermal stability is described by the loss rate. The loss rate was determined by accelerated thermal degradation test, that is, incubate the protein at 37°C for 48h, and no obvious degradation and precipitation were observed. The loss rate is less than 5% within the expiration date under appropriate storage condition.
Restrictions:	For Research Use only

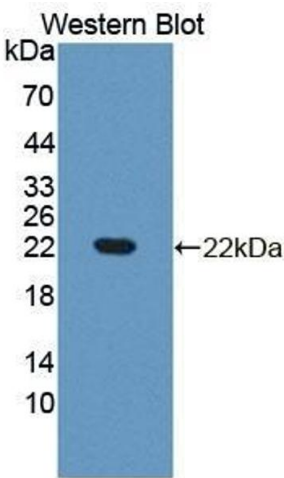
## Handling

Format:	Liquid
Buffer:	PBS, pH 7.4, containing 0.02 % Sodium azide, 50 % glycerol.
Preservative:	Sodium azide
Precaution of Use:	This product contains Sodium azide: a POISONOUS AND HAZARDOUS SUBSTANCE which should be handled by trained staff only.
Storage:	4 °C,-20 °C
Storage Comment:	Store at 4°C for frequent use. Stored at -20°C in a manual defrost freezer for two year without detectable loss of activity. Avoid repeated freeze-thaw cycles.
Expiry Date:	24 months



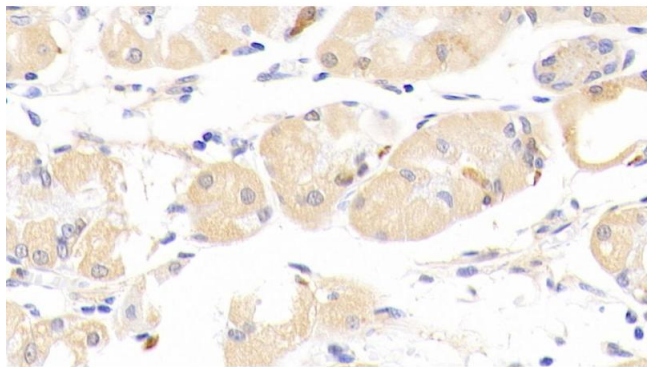
#### Immunohistochemistry

**Image 1.** Detection of PLA2G12 in Mouse Skeletal muscle Tissue using Polyclonal Antibody to Phospholipase A2, Group XII (PLA2G12)



#### Western Blotting

**Image 2.** Detection of Recombinant PLA2G12, Mouse using Polyclonal Antibody to Phospholipase A2, Group XII (PLA2G12)



#### Immunohistochemistry

**Image 3.** Detection of PLA2G12 in Mouse Stomach Tissue using Polyclonal Antibody to Phospholipase A2, Group XII (PLA2G12)