

Datasheet for ABIN7445168

anti-Phospholipase C beta 2 antibody (AA 1-250)**3** Images[Go to Product page](#)

Overview

Quantity:	100 µL
Target:	Phospholipase C beta 2 (PLCb2)
Binding Specificity:	AA 1-250
Reactivity:	Rat
Host:	Rabbit
Clonality:	Polyclonal
Conjugate:	This Phospholipase C beta 2 antibody is un-conjugated
Application:	Western Blotting (WB), Immunohistochemistry (IHC), Immunoprecipitation (IP), Immunocytochemistry (ICC)

Product Details

Purpose:	Polyclonal Antibody to Phospholipase C Beta 2 (PLCb2)
Immunogen:	Recombinant Phospholipase C Beta 2 (PLCb2) corresponding to Met1~Arg250
Isotype:	IgG
Specificity:	The antibody is a rabbit polyclonal antibody raised against PLCb2. It has been selected for its ability to recognize PLCb2 in immunohistochemical staining and western blotting.
Cross-Reactivity:	Human, Mouse
Purification:	Antigen-specific affinity chromatography followed by Protein A affinity chromatography

Target Details

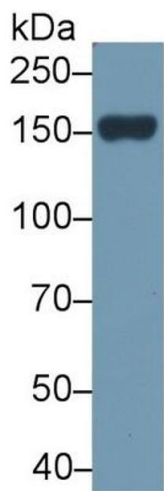
Target:	Phospholipase C beta 2 (PLCb2)
Alternative Name:	Phospholipase C Beta 2 (PLCb2 Products)
Background:	Phosphoinositide phospholipase C-beta-2, 1-phosphatidylinositol 4,5-bisphosphate phosphodiesterase beta-2
Pathways:	WNT Signaling , Thyroid Hormone Synthesis , CXCR4-mediated Signaling Events , G-protein mediated Events , Thromboxane A2 Receptor Signaling

Application Details

Application Notes:	Western blotting: 0.5-2 µg/mL 1:500-2000 Immunohistochemistry: 5-20 µg/mL 1:50-200 Immunocytochemistry: 5-20 µg/mL 1:50-200 Optimal working dilutions must be determined by end user.
Comment:	The thermal stability is described by the loss rate. The loss rate was determined by accelerated thermal degradation test, that is, incubate the protein at 37°C for 48h, and no obvious degradation and precipitation were observed. The loss rate is less than 5% within the expiration date under appropriate storage condition.
Restrictions:	For Research Use only

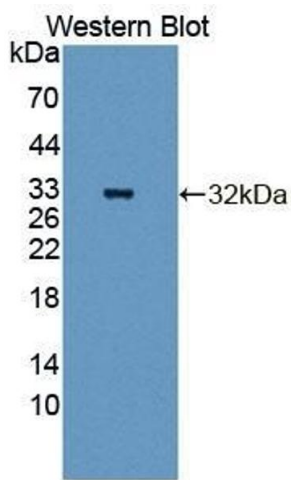
Handling

Format:	Liquid
Buffer:	0.01M PBS, pH 7.4, containing 0.05 % Proclin-300, 50 % glycerol.
Preservative:	ProClin
Precaution of Use:	This product contains ProClin: a POISONOUS AND HAZARDOUS SUBSTANCE which should be handled by trained staff only.
Storage:	4 °C, -20 °C
Storage Comment:	Store at 4°C for frequent use. Stored at -20°C in a manual defrost freezer for two year without detectable loss of activity. Avoid repeated freeze-thaw cycles.
Expiry Date:	24 months



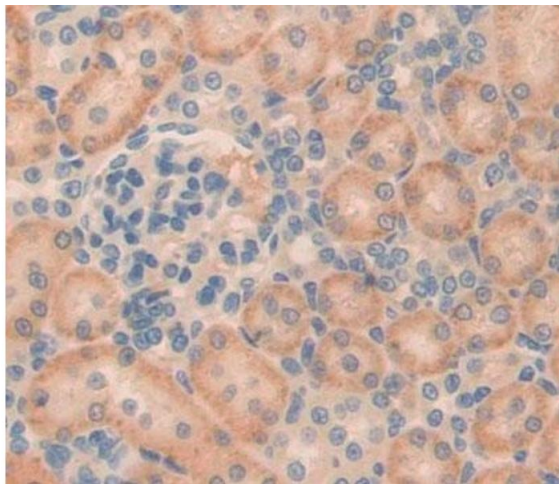
Western Blotting

Image 1. Detection of PLCb2 in Rat Serum using Polyclonal Antibody to Phospholipase C Beta 2 (PLCb2)



Western Blotting

Image 2. Detection of Recombinant PLCb2, Rat using Polyclonal Antibody to Phospholipase C Beta 2 (PLCb2)



Immunohistochemistry

Image 3. #VALUE!