



Datasheet for ABIN7445417  
**anti-Substance P antibody**



[Go to Product page](#)

4 Images

Overview

Quantity:	100 µL
Target:	Substance P
Reactivity:	Human
Host:	Rabbit
Clonality:	Polyclonal
Conjugate:	This Substance P antibody is un-conjugated
Application:	Immunohistochemistry (IHC), Western Blotting (WB), Immunoprecipitation (IP), Immunocytochemistry (ICC)

Product Details

Purpose:	Polyclonal Antibody to Substance P (SP)
Immunogen:	Synthetic Substance P (SP)
Isotype:	IgG
Specificity:	The antibody is a rabbit polyclonal antibody raised against SP. It has been selected for its ability to recognize SP in immunohistochemical staining and western blotting.
Purification:	Antigen-specific affinity chromatography followed by Protein A affinity chromatography

Target Details

Target:	Substance P
Abstract:	<a href="#">Substance P Products</a>

## Application Details

---

Application Notes:	Western blotting: 0.5-2 µg/mL Immunohistochemistry: 5-20 µg/mL Immunocytochemistry: 5-20 µg/mL Optimal working dilutions must be determined by end user.
Comment:	The thermal stability is described by the loss rate. The loss rate was determined by accelerated thermal degradation test, that is, incubate the protein at 37°C for 48h, and no obvious degradation and precipitation were observed. The loss rate is less than 5% within the expiration date under appropriate storage condition.
Restrictions:	For Research Use only

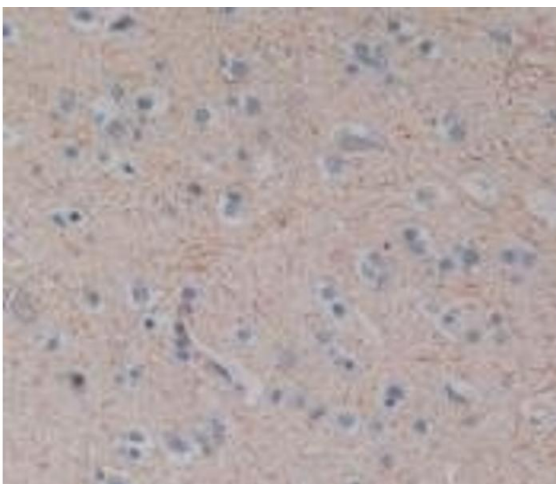
## Handling

---

Format:	Liquid
Buffer:	PBS, pH 7.4, containing 0.02 % Sodium azide, 50 % glycerol.
Preservative:	Sodium azide
Precaution of Use:	This product contains Sodium azide: a POISONOUS AND HAZARDOUS SUBSTANCE which should be handled by trained staff only.
Storage:	4 °C,-20 °C
Storage Comment:	Store at 4°C for frequent use. Stored at -20°C in a manual defrost freezer for two year without detectable loss of activity. Avoid repeated freeze-thaw cycles.
Expiry Date:	24 months

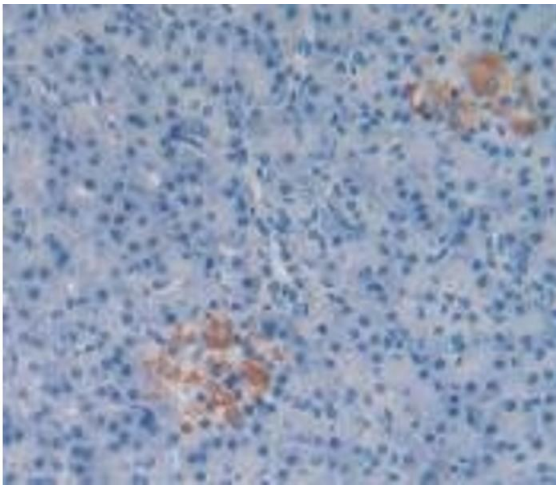
## Images

---



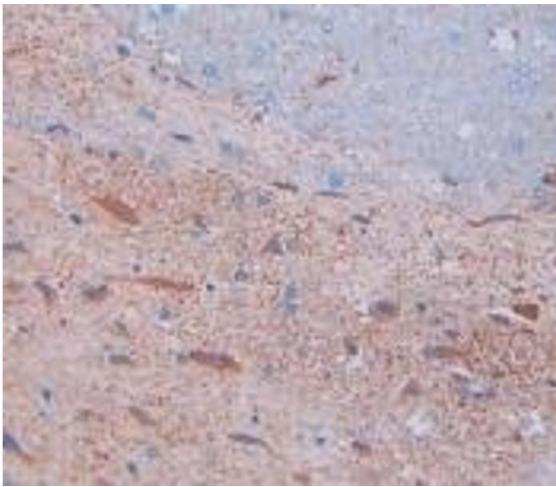
### Immunohistochemistry

**Image 1.** Detection of SP in Human Brain Tissue using Polyclonal Antibody to Substance P (SP)



#### Immunohistochemistry

**Image 2.** Detection of SP in Human Pancreas Tissue using Polyclonal Antibody to Substance P (SP)



#### Immunohistochemistry

**Image 3.** Detection of SP in Rat Spinal Cord Tissue using Polyclonal Antibody to Substance P (SP)

Please check the [product details page](#) for more images. Overall 4 images are available for ABIN7445417.