



[Go to Product page](#)

Datasheet for ABIN7445603  
**anti-FZD4 antibody (AA 37-222)**

2 Images

### Overview

|                      |  |
|----------------------|--|
| Quantity:            | 100 µL   |
| Target:              | FZD4   |
| Binding Specificity: | AA 37-222  |
| Reactivity:          | Human  |
| Host:                | Rabbit   |
| Clonality:           | Polyclonal   |
| Conjugate:           | This FZD4 antibody is un-conjugated  |
| Application:         | Western Blotting (WB), Immunohistochemistry (IHC), Immunocytochemistry (ICC), Immunoprecipitation (IP) |

### Product Details

|                   |  |
|-------------------|--|
| Purpose:          | Polyclonal Antibody to Frizzled Homolog 4 (FZD4)   |
| Immunogen:        | Recombinant Frizzled Homolog 4 (FZD4) corresponding to Phe37~Trp222 with N-terminal His Tag  |
| Isotype:          | IgG  |
| Specificity:      | The antibody is a rabbit polyclonal antibody raised against FZD4. It has been selected for its ability to recognize FZD4 in immunohistochemical staining and western blotting. |
| Cross-Reactivity: | Pig  |
| Purification:     | Antigen-specific affinity chromatography followed by Protein A affinity chromatography   |

## Target Details

---

|                   |   |
|-------------------|---|
| Target:           | FZD4  |
| Alternative Name: | Frizzled Homolog 4 ( <a href="#">FZD4 Products</a> )  |
| Background:       | CD344, EVR1, FEVR, FZD4S, Fz-4, FzE4, GPCR, Exudative Vitreoretinopathy 1                                       |
| Pathways:         | <a href="#">WNT Signaling</a> , <a href="#">Hormone Transport</a> , <a href="#">Sensory Perception of Sound</a> |

## Application Details

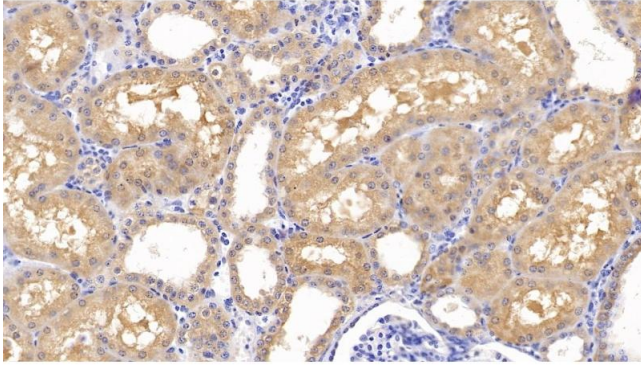
---

|                    |   |
|--------------------|---|
| Application Notes: | Western blotting: 0.5-2 µg/mL<br>Immunohistochemistry: 5-20 µg/mL<br>Immunocytochemistry: 5-20 µg/mL<br>Optimal working dilutions must be determined by end user.   |
| Comment:           | The thermal stability is described by the loss rate. The loss rate was determined by accelerated thermal degradation test, that is, incubate the protein at 37°C for 48h, and no obvious degradation and precipitation were observed. The loss rate is less than 5% within the expiration date under appropriate storage condition. |
| Restrictions:      | For Research Use only   |

## Handling

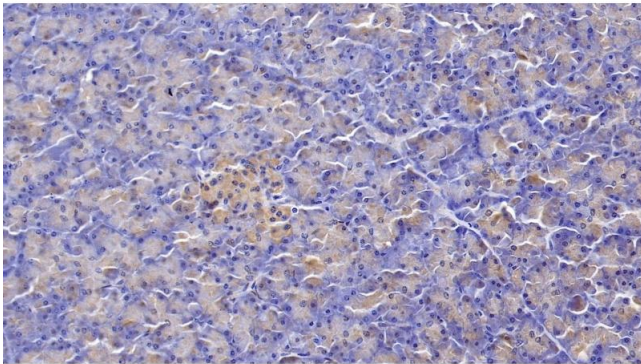
---

|                    |   |
|--------------------|---|
| Format:            | Liquid  |
| Buffer:            | PBS, pH 7.4, containing 0.02 % Sodium azide, 50 % glycerol.   |
| Preservative:      | Sodium azide  |
| Precaution of Use: | This product contains Sodium azide: a POISONOUS AND HAZARDOUS SUBSTANCE which should be handled by trained staff only.  |
| Storage:           | 4 °C,-20 °C   |
| Storage Comment:   | Store at 4°C for frequent use. Stored at -20°C in a manual defrost freezer for two year without detectable loss of activity. Avoid repeated freeze-thaw cycles. |
| Expiry Date:       | 24 months   |



#### Immunohistochemistry

**Image 1.** Detection of FZD4 in Human Kidney Tissue using Polyclonal Antibody to Frizzled Homolog 4 (FZD4)



#### Immunohistochemistry

**Image 2.** Detection of FZD4 in Human Pancreas Tissue using Polyclonal Antibody to Frizzled Homolog 4 (FZD4)