

Datasheet for ABIN7445810  
**anti-MAPKAP1 antibody (AA 8-236)**

## 3 Images

[Go to Product page](#)

## Overview

|                      |  |
|----------------------|--|
| Quantity:            | 100 µL   |
| Target:              | MAPKAP1  |
| Binding Specificity: | AA 8-236   |
| Reactivity:          | Human  |
| Host:                | Rabbit   |
| Clonality:           | Polyclonal   |
| Conjugate:           | This MAPKAP1 antibody is un-conjugated   |
| Application:         | Western Blotting (WB), Immunohistochemistry (IHC), Immunoprecipitation (IP), Immunocytochemistry (ICC) |

## Product Details

|                   |  |
|-------------------|--|
| Purpose:          | Polyclonal Antibody to Mitogen Activated Protein Kinase Associated Protein 1 (MAPKAP1)   |
| Immunogen:        | Recombinant Mitogen Activated Protein Kinase Associated Protein 1 (MAPKAP1) corresponding to Thr8~Glu236 with N-terminal His and GST Tag   |
| Isotype:          | IgG  |
| Specificity:      | The antibody is a rabbit polyclonal antibody raised against MAPKAP1. It has been selected for its ability to recognize MAPKAP1 in immunohistochemical staining and western blotting. |
| Cross-Reactivity: | Pig  |
| Purification:     | Antigen-specific affinity chromatography followed by Protein A affinity chromatography   |

## Target Details

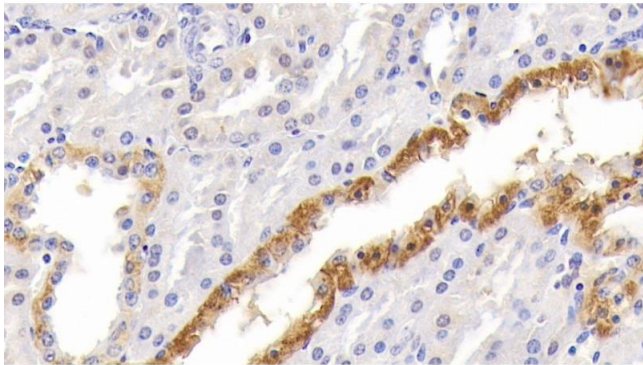
|                   |   |
|-------------------|---|
| Target:           | MAPKAP1   |
| Alternative Name: | Mitogen Activated Protein Kinase Associated Protein 1 ( <a href="#">MAPKAP1 Products</a> )  |
| Background:       | MIP1, SIN1, SIN1b, SIN1g, Stress-Activated Protein Kinase-Interacting 1, Stress-activated map kinase-interacting protein 1, Target of rapamycin complex 2 subunit MAPKAP1   |
| Pathways:         | <a href="#">PI3K-Akt Signaling</a> , <a href="#">Fc-epsilon Receptor Signaling Pathway</a> , <a href="#">Neurotrophin Signaling Pathway</a> , <a href="#">Skeletal Muscle Fiber Development</a> , <a href="#">CXCR4-mediated Signaling Events</a> |

## Application Details

|                    |   |
|--------------------|---|
| Application Notes: | Western blotting: 0.5-2 µg/mL<br>Immunohistochemistry: 5-20 µg/mL<br>Immunocytochemistry: 5-20 µg/mL<br>Optimal working dilutions must be determined by end user.   |
| Comment:           | The thermal stability is described by the loss rate. The loss rate was determined by accelerated thermal degradation test, that is, incubate the protein at 37°C for 48h, and no obvious degradation and precipitation were observed. The loss rate is less than 5% within the expiration date under appropriate storage condition. |
| Restrictions:      | For Research Use only   |

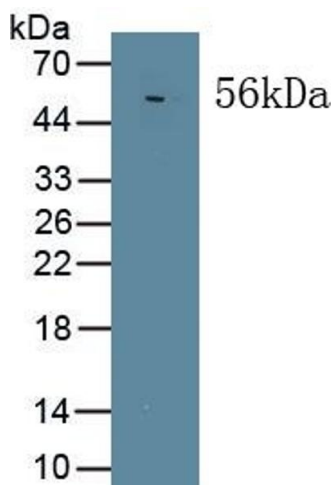
## Handling

|                    |   |
|--------------------|---|
| Format:            | Liquid  |
| Buffer:            | PBS, pH 7.4, containing 0.02 % Sodium azide, 50 % glycerol.   |
| Preservative:      | Sodium azide  |
| Precaution of Use: | This product contains Sodium azide: a POISONOUS AND HAZARDOUS SUBSTANCE which should be handled by trained staff only.  |
| Storage:           | 4 °C, -20 °C  |
| Storage Comment:   | Store at 4°C for frequent use. Stored at -20°C in a manual defrost freezer for two year without detectable loss of activity. Avoid repeated freeze-thaw cycles. |
| Expiry Date:       | 24 months   |



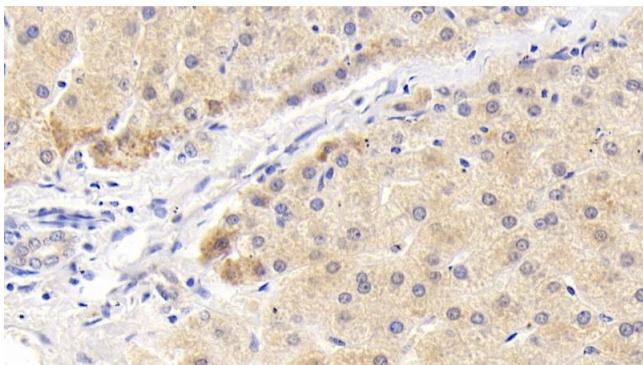
#### Immunohistochemistry

**Image 1.** Detection of MAPKAP1 in Human Kidney Tissue using Polyclonal Antibody to Mitogen Activated Protein Kinase Associated Protein 1 (MAPKAP1)



#### Western Blotting

**Image 2.** Detection of Recombinant MAPKAP1, Human using Polyclonal Antibody to Mitogen Activated Protein Kinase Associated Protein 1 (MAPKAP1)



#### Immunohistochemistry

**Image 3.** Detection of MAPKAP1 in Human Liver Tissue using Polyclonal Antibody to Mitogen Activated Protein Kinase Associated Protein 1 (MAPKAP1)