



Datasheet for ABIN7445918
anti-ACTC1 antibody (AA 156-368)



[Go to Product page](#)

3 Images

Overview

Quantity:	100 µL
Target:	ACTC1
Binding Specificity:	AA 156-368
Reactivity:	Human
Host:	Rabbit
Clonality:	Polyclonal
Application:	Western Blotting (WB)

Product Details

Purpose:	Anti-Actin Alpha 1, Cardiac Muscle (ACTC1) Polyclonal Antibody
Immunogen:	Recombinant Actin Alpha 1, Cardiac Muscle (ACTC1) corresponding to Asp156~Gly368 with N-terminal His Tag
Specificity:	The antibody is a rabbit polyclonal antibody raised against ACTC1. It has been selected for its ability to recognize ACTC1 in immunohistochemical staining and western blotting.
Cross-Reactivity:	Mouse
Purification:	Antigen-specific affinity chromatography followed by Protein A affinity chromatography

Target Details

Target:	ACTC1
Alternative Name:	Actin Alpha 1, Cardiac Muscle (ACTC1 Products)

Target Details

Background: ACTC, CMD1R, CMD1-R, ACT-a1

Pathways: [Myometrial Relaxation and Contraction](#)

Application Details

Application Notes: Western blotting: 0.5-2 µg/mL Optimal working dilutions must be determined by end user.

Comment: The thermal stability is described by the loss rate. The loss rate was determined by accelerated thermal degradation test, that is, incubate the protein at 37°C for 48h, and no obvious degradation and precipitation were observed. The loss rate is less than 5% within the expiration date under appropriate storage condition.

Restrictions: For Research Use only

Handling

Format: Liquid

Buffer: PBS, pH 7.4, containing 0.02 % Sodium azide, 50 % glycerol.

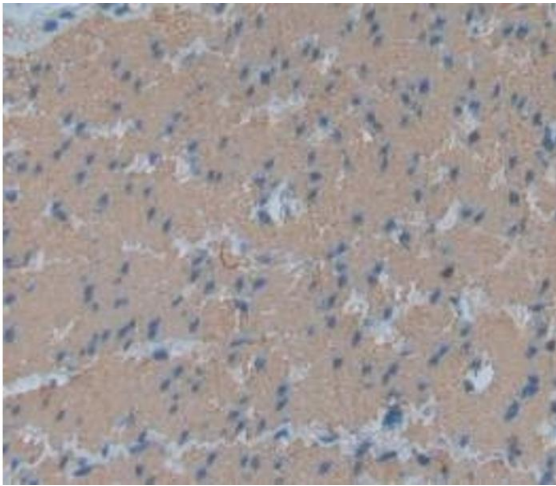
Preservative: Sodium azide

Precaution of Use: This product contains Sodium azide: a POISONOUS AND HAZARDOUS SUBSTANCE which should be handled by trained staff only.

Storage: 4 °C,-20 °C

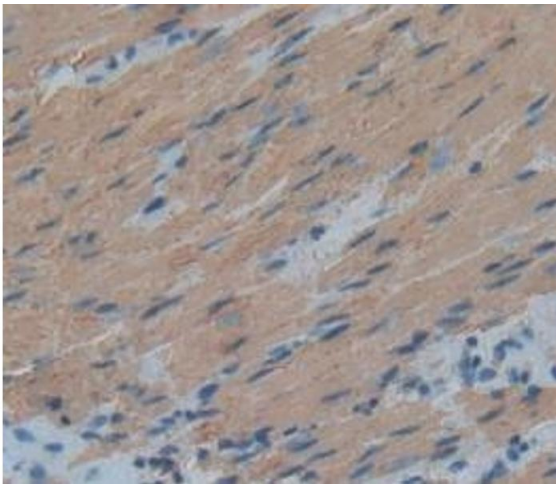
Storage Comment: Store at 4°C for frequent use. Stored at -20°C in a manual defrost freezer for two year without detectable loss of activity. Avoid repeated freeze-thaw cycles.

Expiry Date: 24 months



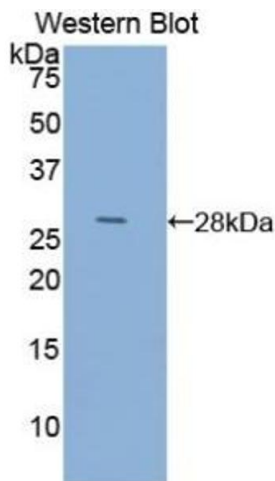
Immunohistochemistry

Image 1. Detection of ACTC1 in Human esophagus Tissue using Anti-Actin Alpha 1, Cardiac Muscle (ACTC1) Polyclonal Antibody



Immunohistochemistry

Image 2. Detection of ACTC1 in Human Rectum Tissue using Anti-Actin Alpha 1, Cardiac Muscle (ACTC1) Polyclonal Antibody



Western Blotting

Image 3. Detection of Recombinant ACTC1, Human using Anti-Actin Alpha 1, Cardiac Muscle (ACTC1) Polyclonal Antibody