

Datasheet for ABIN745373
anti-SNRPE antibody (pSer602)[Go to Product page](#)

1 Image

Overview

Quantity:	100 µL
Target:	SNRPE
Binding Specificity:	pSer602
Reactivity:	Rat
Host:	Rabbit
Clonality:	Polyclonal
Conjugate:	This SNRPE antibody is un-conjugated
Application:	Western Blotting (WB), ELISA, Immunofluorescence (Cultured Cells) (IF (cc)), Immunofluorescence (Paraffin-embedded Sections) (IF (p)), Immunohistochemistry (Paraffin-embedded Sections) (IHC (p)), Immunohistochemistry (Frozen Sections) (IHC (fro))

Product Details

Immunogen:	KLH conjugated synthetic phosphopeptide derived from human B-Raf around the phosphorylation site of Ser602
Isotype:	IgG
Specificity:	Due to the highly conserved nature of this phosphorylated region, this antibody may react with C-Raf when phosphorylated at the Ser494 due to homology.
Cross-Reactivity:	Rat
Predicted Reactivity:	Human,Mouse,Dog,Cow,Pig,Horse,Chicken,Rabbit
Purification:	Purified by Protein A.

Target Details

Target:	SNRPE
Alternative Name:	B-Raf (SNRPE Products)
Background:	<p>Synonyms: NS7, BRAF1, RAFB1, B-RAF1, Serine/threonine-protein kinase B-raf, Proto-oncogene B-Raf, p94, v-Raf murine sarcoma viral oncogene homolog B1, BRAF</p> <p>Background: Protein kinase involved in the transduction of mitogenic signals from the cell membrane to the nucleus. May play a role in the postsynaptic responses of hippocampal neuron. Phosphorylates MAP2K1, and thereby contributes to the MAP kinase signal transduction pathway.</p>
Gene ID:	673
UniProt:	P15056
Pathways:	Ribonucleoprotein Complex Subunit Organization , Hepatitis C

Application Details

Application Notes:	WB 1:300-5000 ELISA 1:500-1000 IHC-P 1:200-400 IHC-F 1:100-500 IF(IHC-P) 1:50-200 IF(IHC-F) 1:50-200 IF(ICC) 1:50-200
Restrictions:	For Research Use only

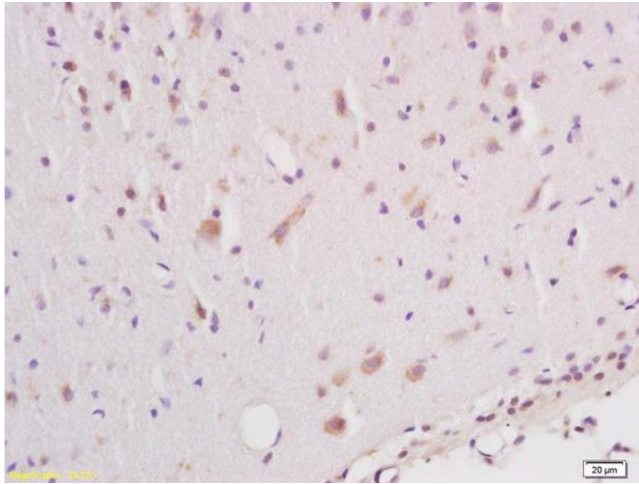
Handling

Format:	Liquid
Concentration:	1 µg/µL
Buffer:	0.01M TBS(pH 7.4) with 1 % BSA, 0.02 % Proclin300 and 50 % Glycerol.
Preservative:	ProClin
Precaution of Use:	This product contains ProClin: a POISONOUS AND HAZARDOUS SUBSTANCE, which should be handled by trained staff only.
Storage:	4 °C,-20 °C
Storage Comment:	Shipped at 4°C. Store at -20°C for one year. Avoid repeated freeze/thaw cycles.

Handling

Expiry Date: 12 months

Images



Immunohistochemistry

Image 1. Formalin-fixed and paraffin embedded rat brain labeled with Anti phospho-B-Raf (Ser602) Polyclonal Antibody, Unconjugated (ABIN745373) at 1:200 followed by conjugation to the secondary antibody and DAB staining