

Datasheet for ABIN7455287
anti-IL21 Receptor antibody



[Go to Product page](#)

1 Image

Overview

Quantity:	10 µg
Target:	IL21 Receptor (IL21R)
Reactivity:	Human
Host:	Rabbit
Clonality:	Chimeric
Conjugate:	This IL21 Receptor antibody is un-conjugated
Application:	ELISA, Flow Cytometry (FACS)

Product Details

Isotype:	IgG1
Fragment:	Fc fragment
Characteristics:	Rabbit/Human Fc chimeric IgG1
Purification:	Purified from cell culture supernatant by affinity chromatography

Target Details

Target:	IL21 Receptor (IL21R)
Alternative Name:	IL21R (IL21R Products)
Background:	CD360, IMD56, NILR, Description: The protein encoded by this gene is a cytokine receptor for interleukin 21 (IL21). It belongs to the type I cytokine receptors, and has been shown to form a heterodimeric receptor complex with the common gamma-chain, a receptor subunit also shared by the receptors for

Target Details

interleukin 2, 4, 7, 9, and 15. This receptor transduces the growth promoting signal of IL21, and is important for the proliferation and differentiation of T cells, B cells, and natural killer (NK) cells. The ligand binding of this receptor leads to the activation of multiple downstream signaling molecules, including JAK1, JAK3, STAT1, and STAT3. Knockout studies of a similar gene in mouse suggest a role for this gene in regulating immunoglobulin production. Three alternatively spliced transcript variants have been described.

UniProt:	Q9HBE5
Pathways:	JAK-STAT Signaling

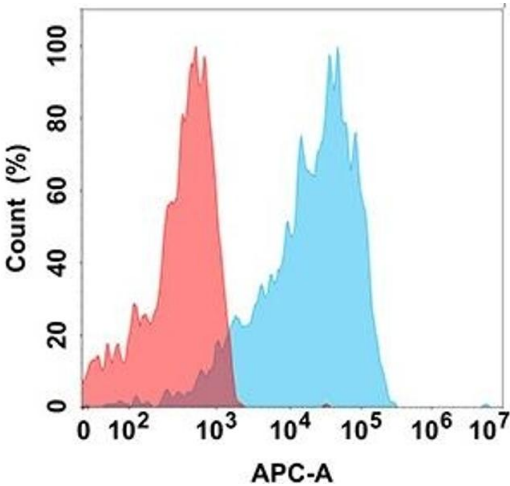
Application Details

Application Notes:	ELISA 1:5000-10000, Flow Cyt 1:100
Restrictions:	For Research Use only

Handling

Format:	Liquid
Storage:	-20 °C,-80 °C
Storage Comment:	Store at -20°C to -80°C for 12 months in lyophilized form. After reconstitution, if not intended for use within a month, aliquot and store at -80°C (Avoid repeated freezing and thawing). Lyophilized proteins are shipped at ambient temperature.
Expiry Date:	12 months

Images



Flow Cytometry

Image 1. Flow cytometry analysis with Anti-IL21R on Expi293 cells transfected with human IL21R (Blue histogram) or Expi293 transfected with irrelevant protein (Red histogram).