

Datasheet for ABIN7455335  
**anti-CLEC2D antibody**



[Go to Product page](#)

1 Image

## Overview

Quantity:	10 µg
Target:	CLEC2D
Reactivity:	Human
Host:	Rabbit
Clonality:	Chimeric
Conjugate:	This CLEC2D antibody is un-conjugated
Application:	Flow Cytometry (FACS)

## Product Details

Isotype:	IgG1
Fragment:	Fc fragment
Characteristics:	Rabbit/Human Fc chimeric IgG1
Purification:	Purified from cell culture supernatant by affinity chromatography

## Target Details

Target:	CLEC2D
Alternative Name:	CLEC2D ( <a href="#">CLEC2D Products</a> )
Background:	C-type lectin domain family 2 member D,Lectin-like NK cell receptor,LLT-1,Osteoclast inhibitory lectin,  Description: This gene encodes a member of the natural killer cell receptor C-type lectin family.  The encoded protein inhibits osteoclast formation and contains a transmembrane domain near

Target Details

	the N-terminus as well as the C-type lectin-like extracellular domain. Several alternatively spliced transcript variants have been identified for this gene.
UniProt:	<a href="#">Q9UHP7</a>
Pathways:	<a href="#">Regulation of Leukocyte Mediated Immunity</a>

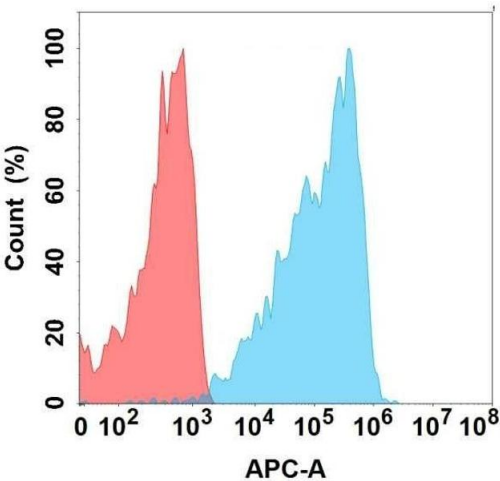
Application Details

Application Notes:	Flow Cyt 1:100
Restrictions:	For Research Use only

Handling

Format:	Liquid
Storage:	-20 °C,-80 °C
Storage Comment:	Store at -20°C to -80°C for 12 months in lyophilized form. After reconstitution, if not intended for use within a month, aliquot and store at -80°C (Avoid repeated freezing and thawing).  Lyophilized proteins are shipped at ambient temperature.
Expiry Date:	12 months

Images



**Flow Cytometry**

**Image 1.** Flow cytometry analysis with Anti-CD on Expi293 cells transfected with human CD (Blue histogram) or Expi293 transfected with irrelevant protein (Red histogram).