

Datasheet for ABIN7455530

QSOX1 Protein (AA 30-706) (His tag)[Go to Product page](#)**1** Image

Overview

Quantity:	10 µg
Target:	QSOX1
Protein Characteristics:	AA 30-706
Origin:	Human
Source:	HEK-293 Cells
Protein Type:	Recombinant
Purification tag / Conjugate:	This QSOX1 protein is labelled with His tag.

Product Details

Purpose:	Recombinant human QSOX1 protein with C-terminal 6xHis tag
Specificity:	QSOX1 (Ala30-Ser706) 6xHis tag
Characteristics:	Extracellular Domain Protein
Purification:	Purified from cell culture supernatant by affinity chromatography
Purity:	The purity of the protein is greater than 85 % as determined by SDS-PAGE and Coomassie blue staining.

Target Details

Target:	QSOX1
Alternative Name:	QSOX1 (QSOX1 Products)
Background:	This gene encodes a protein that contains domains of thioredoxin and ERV1, members of two

Target Details

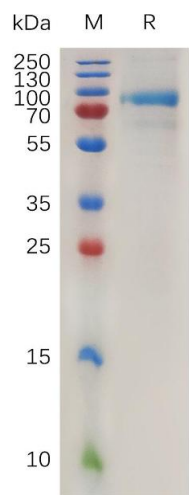
	long-standing gene families. The gene expression is induced as fibroblasts begin to exit the proliferative cycle and enter quiescence, suggesting that this gene plays an important role in growth regulation. Two transcript variants encoding two different isoforms have been found for this gene. [provided by RefSeq, Jul 2008]
Molecular Weight:	predicted molecular mass of 75.9 kDa after removal of the signal peptide. The apparent molecular mass of QSOX1-His is 70-100 kDa due to glycosylation.
UniProt:	O00391
Pathways:	Cell RedoxHomeostasis

Application Details

Restrictions:	For Research Use only
---------------	-----------------------

Handling

Format:	Lyophilized
Buffer:	Lyophilized from sterile PBS, pH 7.4. Normally 5 % - 8 % trehalose is added as protectants before lyophilization.
Storage:	-20 °C,-80 °C
Storage Comment:	Store at -20°C to -80°C for 12 months in lyophilized form. After reconstitution, if not intended for use within a month, aliquot and store at -80°C (Avoid repeated freezing and thawing). Lyophilized proteins are shipped at ambient temperature.
Expiry Date:	12 months



SDS-PAGE

Image 1. Human Q Protein, His Tag on SDS-PAGE under reducing condition.