

Datasheet for ABIN7455644
IL10RB Protein (Fc Tag)



[Go to Product page](#)

1 Image

Overview

Quantity:	50 µg
Target:	IL10RB
Origin:	Human
Source:	HEK-293 Cells
Protein Type:	Recombinant
Purification tag / Conjugate:	This IL10RB protein is labelled with Fc Tag.

Product Details

Purpose:	Recombinant Human Interleukin-10 Receptor Subunit Beta is produced by our Mammalian expression system and the target gene encoding Met20-Ser220 is expressed with a Fc tag at the C-terminus.
Characteristics:	Extracellular Domain Protein
Purification:	Purified from cell culture supernatant by affinity chromatography
Purity:	Greater than 95 % as determined by reducing SDS-PAGE.

Target Details

Target:	IL10RB
Alternative Name:	IL-10RB (IL10RB Products)
Background:	Interleukin-10 receptor subunit beta(IL10RB), also known as Cytokine receptor class-II member 4, Cytokine receptor family 2 member 4, Interleukin-10 receptor subunit 2, belongs to the type II cytokine receptor family. IL10RB is a single- pass type I membrane protein and contains two

Target Details

fibronectin type-III domains. It is an accessory chain which is essential for the active interleukin 10 receptor complex. Coexpression of IL10RB and IL10RA proteins has been shown to be required for IL10-induced signal transduction. Defects in IL10RB are the cause of inflammatory bowel disease type 25 (IBD25) which is a chronic, relapsing inflammation of the gastrointestinal tract with a complex etiology.

Molecular Weight:	50.6 KDa
UniProt:	Q08334

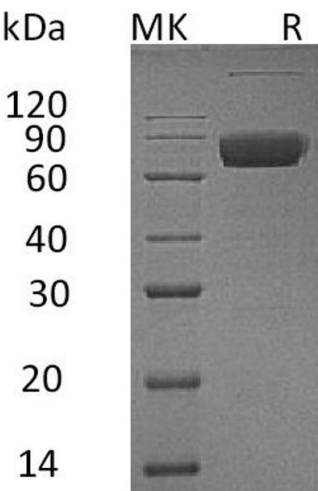
Application Details

Restrictions:	For Research Use only
---------------	-----------------------

Handling

Format:	Lyophilized
Buffer:	Lyophilized from a 0.2 µm filtered solution of PBS, pH 7.4.
Storage:	-20 °C,-80 °C
Storage Comment:	Store at -20°C to -80°C for 12 months in lyophilized form. After reconstitution, if not intended for use within a month, aliquot and store at -80°C (Avoid repeated freezing and thawing). Lyophilized proteins are shipped at ambient temperature.
Expiry Date:	12 months

Images



SDS-PAGE

Image 1. Greater than 95 % as determined by reducing SDS-PAGE.