

Datasheet for ABIN7455659
IL20RA Protein (Fc Tag)



[Go to Product page](#)

1 Image

Overview

Quantity:	50 µg
Target:	IL20RA
Origin:	Human
Source:	HEK-293 Cells
Protein Type:	Recombinant
Purification tag / Conjugate:	This IL20RA protein is labelled with Fc Tag.

Product Details

Purpose:	Recombinant Human Interleukin-20 Receptor Subunit Alpha is produced by our Mammalian expression system and the target gene encoding Val30-Lys250 is expressed with a Fc tag at the C-terminus.
Characteristics:	Extracellular Domain Protein
Purification:	Purified from cell culture supernatant by affinity chromatography
Purity:	Greater than 95 % as determined by reducing SDS-PAGE.

Target Details

Target:	IL20RA
Alternative Name:	IL-20RA (IL20RA Products)
Background:	Interleukin-20 Receptor Subunit a (IL20RA) is a single-pass type I membrane protein that is a member of the type II cytokine receptor family. IL20RA is synthesized a 553 amino acid glycoprotein precursor containing a 29 amino acid signal peptide, a 221 amino acid

Target Details

extracellular domain with two fibronectin type-III domains, a 24 amino acid transmembrane region, and a 279 amino acid intracellular domain. IL20RA is widely expressed with highest levels found in skin and testis and high levels in brain. IL20RA forms a heterodimer with IL20RB, and the complex serves as a receptor for IL19, IL20 and IL24. IL20RA also forms a heterodimer with the unique and specific receptor IL10RB and functions as the receptor for IL26.

Molecular Weight:	52.4 KDa
UniProt:	Q9UHF4

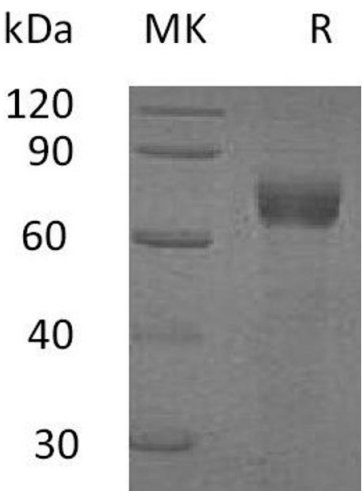
Application Details

Restrictions:	For Research Use only
---------------	-----------------------

Handling

Format:	Lyophilized
Buffer:	Lyophilized from a 0.2 µm filtered solution of PBS, pH 7.4.
Storage:	-20 °C,-80 °C
Storage Comment:	Store at -20°C to -80°C for 12 months in lyophilized form. After reconstitution, if not intended for use within a month, aliquot and store at -80°C (Avoid repeated freezing and thawing). Lyophilized proteins are shipped at ambient temperature.
Expiry Date:	12 months

Images



SDS-PAGE

Image 1. Greater than 95 % as determined by reducing SDS-PAGE.