

Datasheet for ABIN7455743

SLAMF8 Protein (AA 23-233) (His tag)[Go to Product page](#)**1** Image

Overview

Quantity:	10 µg
Target:	SLAMF8
Protein Characteristics:	AA 23-233
Origin:	Human
Source:	HEK-293 Cells
Protein Type:	Recombinant
Purification tag / Conjugate:	This SLAMF8 protein is labelled with His tag.

Product Details

Purpose:	Recombinant Human SLAMF8 Protein with C-terminal 6xHis tag
Specificity:	SLAMF8 (Ala23-Asp233) 6xHis tag
Characteristics:	Extracellular Domain Protein
Purification:	Purified from cell culture supernatant by affinity chromatography
Purity:	The purity of the protein is greater than 85 % as determined by SDS-PAGE and Coomassie blue staining.

Target Details

Target:	SLAMF8
Alternative Name:	SLAMF8 (SLAMF8 Products)
Background:	This gene encodes a member of the CD2 family of cell surface proteins involved in lymphocyte

Target Details

	activation. These proteins are characterized by Ig domains. This protein is expressed in lymphoid tissues, and studies of a similar protein in mouse suggest that it may function during B cell lineage commitment. The gene is found in a region of chromosome 1 containing many CD2 genes. [provided by RefSeq, Jul 2008]
Molecular Weight:	predicted molecular mass of 24.2 kDa after removal of the signal peptide. The apparent molecular mass of SLAMF8-His is 25-35 kDa due to glycosylation.
UniProt:	Q9P0V8

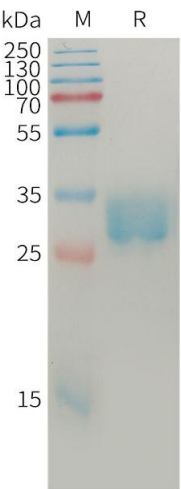
Application Details

Restrictions:	For Research Use only
---------------	-----------------------

Handling

Format:	Lyophilized
Buffer:	Lyophilized from sterile PBS, pH 7.4. Normally 5 % - 8 % trehalose is added as protectants before lyophilization.
Storage:	-20 °C,-80 °C
Storage Comment:	Store at -20°C to -80°C for 12 months in lyophilized form. After reconstitution, if not intended for use within a month, aliquot and store at -80°C (Avoid repeated freezing and thawing). Lyophilized proteins are shipped at ambient temperature.
Expiry Date:	12 months

Images



SDS-PAGE

Image 1. Human SL Protein, His Tag on SDS-PAGE under reducing condition.