



[Go to Product page](#)

Datasheet for ABIN7455988

## anti-CXCL14 antibody

### 2 Images

#### Overview

Quantity:	100 µg
Target:	CXCL14
Reactivity:	Human, Mouse
Host:	Mouse
Clonality:	Monoclonal
Conjugate:	This CXCL14 antibody is un-conjugated
Application:	Immunohistochemistry (IHC)

#### Product Details

Immunogen:	Protein fragment coupled to KLH
Clone:	MAB163581
Isotype:	IgG2c kappa
Specificity:	CXCL14
Characteristics:	Monospecific monoclonal antibodies, validated using a next-generation human proteome microarray containing 21,000 full-length and isoform specific purified proteins.
Purification:	Protein G Affinity Chromatography
Grade:	Microarray verified

#### Target Details

Target:	CXCL14
---------	--------

## Target Details

Alternative Name: CXCL14 ([CXCL14 Products](#))

UniProt: [O95715](#)

Pathways: [Autophagy](#)

## Application Details

Application Notes: Optimal dilution for a specific application should be determined

Restrictions: For Research Use only

## Handling

Format: Liquid

Concentration: 1.0 mg/mL

Buffer: PBS, pH 7.4 (0.05 % sodium azide on demand)

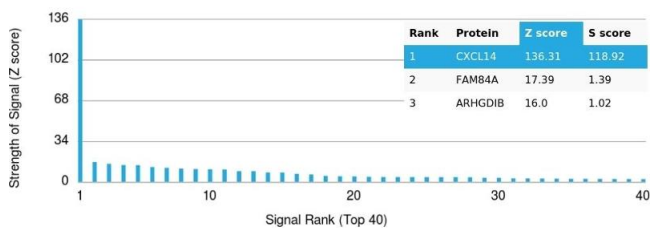
Preservative: Azide free

Storage: -20 °C

## Images

### Protein Array

#### Image 1.



**Immunohistochemistry**

**Image 2.**

