

Datasheet for ABIN7455994

## anti-GLUL antibody

### 5 Images



[Go to Product page](#)

### Overview

Quantity:	100 µg
Target:	GLUL
Reactivity:	Human, Mouse
Host:	Mouse
Clonality:	Monoclonal
Conjugate:	This GLUL antibody is un-conjugated
Application:	Immunohistochemistry (IHC)

### Product Details

Immunogen:	Protein fragment coupled to KLH
Clone:	MAB178750
Isotype:	IgG2a kappa
Specificity:	GLUL
Characteristics:	Monospecific monoclonal antibodies, validated using a next-generation human proteome microarray containing 21,000 full-length and isoform specific purified proteins.
Purification:	Protein G Affinity Chromatography
Grade:	Microarray verified

### Target Details

Target:	GLUL
---------	------

## Target Details

Alternative Name:	GLUL ( <a href="#">GLUL Products</a> )
UniProt:	<a href="#">P15104</a>
Pathways:	<a href="#">Positive Regulation of Peptide Hormone Secretion</a>

## Application Details

Application Notes:	Optimal dilution for a specific application should be determined
Restrictions:	For Research Use only

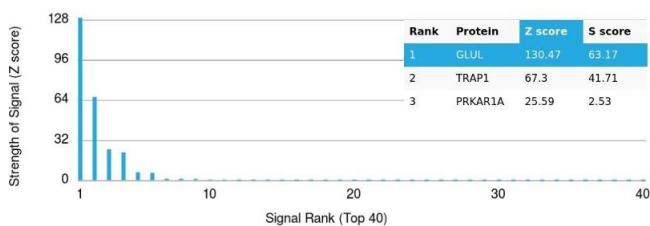
## Handling

Format:	Liquid
Concentration:	1.0 mg/mL
Buffer:	PBS, pH 7.4 (0.05 % sodium azide on demand)
Preservative:	Azide free
Storage:	-20 °C

## Images

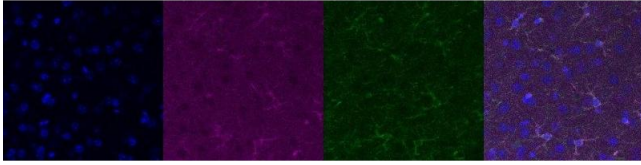
### Protein Array

Image 1.



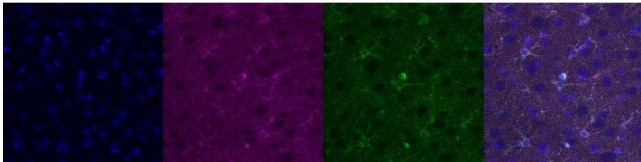
**Immunohistochemistry**

**Image 2.**



**Immunohistochemistry**

**Image 3.**



Please check the [product details page](#) for more images. Overall 5 images are available for ABIN7455994.