



[Go to Product page](#)

Datasheet for ABIN7456138

anti-DDC antibody

2 Images

Overview

Quantity:	100 µg
Target:	DDC
Reactivity:	Human, Mouse
Host:	Mouse
Clonality:	Monoclonal
Conjugate:	This DDC antibody is un-conjugated
Application:	Immunohistochemistry (IHC)

Product Details

Immunogen:	Protein fragment coupled to KLH
Clone:	MAB534180
Isotype:	IgG2b kappa
Specificity:	DDC
Characteristics:	Monospecific monoclonal antibodies, validated using a next-generation human proteome microarray containing 21,000 full-length and isoform specific purified proteins.
Purification:	Protein G Affinity Chromatography
Grade:	Microarray verified

Target Details

Target:	DDC
---------	-----

Target Details

Alternative Name: DDC ([DDC Products](#))

UniProt: [P20711](#)

Pathways: [Dopaminergic Neurogenesis](#)

Application Details

Application Notes: Optimal dilution for a specific application should be determined

Restrictions: For Research Use only

Handling

Format: Liquid

Concentration: 1.0 mg/mL

Buffer: PBS, pH 7.4 (0.05 % sodium azide on demand)

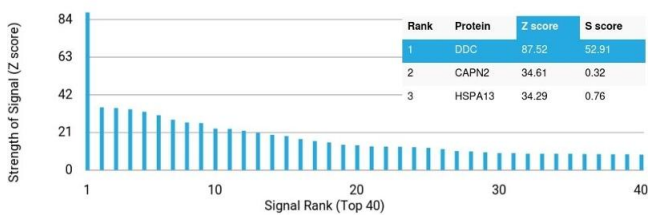
Preservative: Azide free

Storage: -20 °C

Images

Protein Array

Image 1.



Immunohistochemistry

Image 2.

