



[Go to Product page](#)

Datasheet for ABIN7456207

anti-CRH antibody

3 Images

Overview

Quantity:	100 µg
Target:	CRH
Reactivity:	Human, Mouse
Host:	Mouse
Clonality:	Monoclonal
Conjugate:	This CRH antibody is un-conjugated
Application:	Immunohistochemistry (IHC)

Product Details

Immunogen:	Protein fragment coupled to KLH
Clone:	MAB701026
Isotype:	IgG2b kappa
Specificity:	CRH
Characteristics:	Monospecific monoclonal antibodies, validated using a next-generation human proteome microarray containing 21,000 full-length and isoform specific purified proteins.
Purification:	Protein G Affinity Chromatography
Grade:	Microarray verified

Target Details

Target:	CRH
---------	-----

Target Details

Alternative Name: CRH ([CRH Products](#))

UniProt: [P06850](#)

Pathways: [Positive Regulation of Peptide Hormone Secretion](#), [Hormone Activity](#), [Negative Regulation of Hormone Secretion](#), [cAMP Metabolic Process](#), [Myometrial Relaxation and Contraction](#), [Feeding Behaviour](#)

Application Details

Application Notes: Optimal dilution for a specific application should be determined

Restrictions: For Research Use only

Handling

Format: Liquid

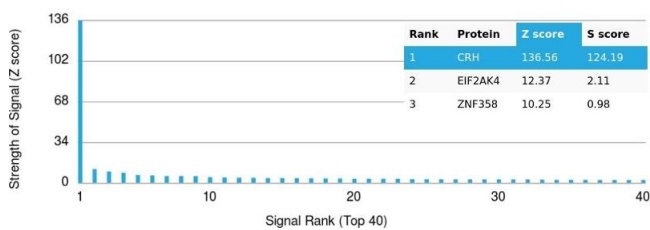
Concentration: 1.0 mg/mL

Buffer: PBS, pH 7.4 (0.05 % sodium azide on demand)

Preservative: Azide free

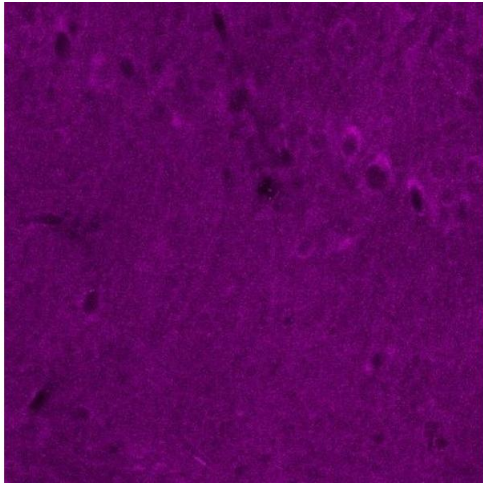
Storage: -20 °C

Images



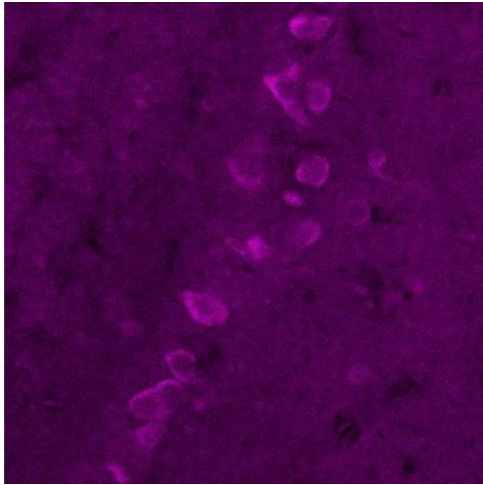
Protein Array

Image 1.



Immunohistochemistry

Image 2.



Immunohistochemistry

Image 3.