



[Go to Product page](#)

Datasheet for ABIN7456239

anti-Serotonin Receptor 1A antibody

3 Images

Overview

Quantity:	100 µg
Target:	Serotonin Receptor 1A (HTR1A)
Reactivity:	Human
Host:	Mouse
Clonality:	Monoclonal
Conjugate:	This Serotonin Receptor 1A antibody is un-conjugated
Application:	Immunohistochemistry (IHC)

Product Details

Immunogen:	Protein fragment coupled to KLH
Clone:	MAB765230
Isotype:	IgG2c kappa
Specificity:	HTR1A
Characteristics:	Monospecific monoclonal antibodies, validated using a next-generation human proteome microarray containing 21,000 full-length and isoform specific purified proteins.
Purification:	Protein G Affinity Chromatography
Grade:	Microarray verified

Target Details

Target:	Serotonin Receptor 1A (HTR1A)
---------	-------------------------------

Target Details

Alternative Name: HTR1A ([HTR1A Products](#))

UniProt: [P08908](#)

Pathways: [JAK-STAT Signaling](#), [Synaptic Membrane](#), [Feeding Behaviour](#)

Application Details

Application Notes: Optimal dilution for a specific application should be determined

Restrictions: For Research Use only

Handling

Format: Liquid

Concentration: 1.0 mg/mL

Buffer: PBS, pH 7.4 (0.05 % sodium azide on demand)

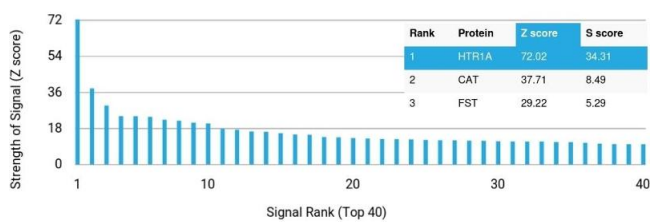
Preservative: Azide free

Storage: -20 °C

Images

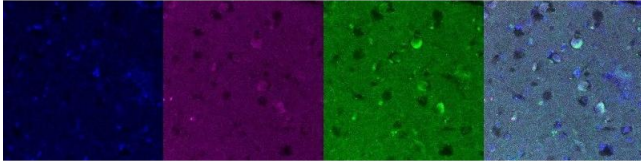
Protein Array

Image 1.



Immunohistochemistry

Image 2.



Immunohistochemistry

Image 3.

