



[Go to Product page](#)

Datasheet for ABIN7456339  
**anti-ATP5A1 antibody**

4 Images

### Overview

Quantity:	100 µg
Target:	ATP5A1
Reactivity:	Human, Mouse
Host:	Mouse
Clonality:	Monoclonal
Conjugate:	This ATP5A1 antibody is un-conjugated
Application:	Immunohistochemistry (IHC)

### Product Details

Immunogen:	Protein fragment coupled to KLH
Clone:	MAB975457
Isotype:	IgG2c kappa
Specificity:	ATP5A1
Characteristics:	Monospecific monoclonal antibodies, validated using a next-generation human proteome microarray containing 21,000 full-length and isoform specific purified proteins.
Purification:	Protein G Affinity Chromatography
Grade:	Microarray verified

### Target Details

Target:	ATP5A1
---------	--------

## Target Details

Alternative Name: ATP5A1 ([ATP5A1 Products](#))

UniProt: [P25705](#)

Pathways: [Proton Transport, Ribonucleoside Biosynthetic Process](#)

## Application Details

Application Notes: Optimal dilution for a specific application should be determined

Restrictions: For Research Use only

## Handling

Format: Liquid

Concentration: 1.0 mg/mL

Buffer: PBS, pH 7.4 (0.05 % sodium azide on demand)

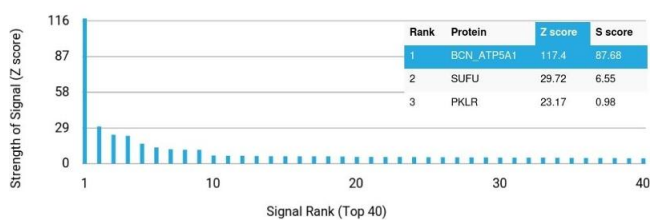
Preservative: Azide free

Storage: -20 °C

## Images

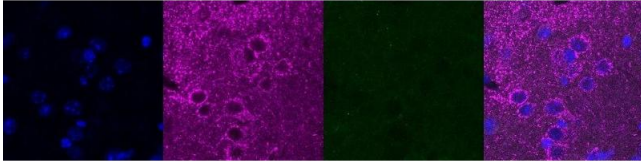
### Protein Array

Image 1.



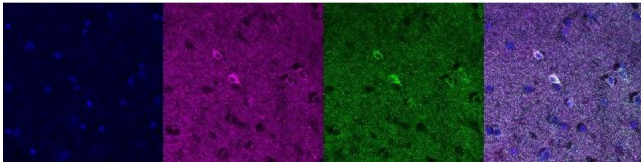
**Immunohistochemistry**

**Image 2.**



**Immunohistochemistry**

**Image 3.**



Please check the [product details page](#) for more images. Overall 4 images are available for ABIN7456339.