

Datasheet for ABIN745688
anti-SGK1 antibody (pSer78)

4 Images

[Go to Product page](#)

Overview

Quantity:	100 µL
Target:	SGK1
Binding Specificity:	pSer78
Reactivity:	Human, Mouse, Rat
Host:	Rabbit
Clonality:	Polyclonal
Conjugate:	This SGK1 antibody is un-conjugated
Application:	Western Blotting (WB), ELISA, Immunohistochemistry (Paraffin-embedded Sections) (IHC (p)), Immunofluorescence (Paraffin-embedded Sections) (IF (p)), Flow Cytometry (FACS), Immunofluorescence (Cultured Cells) (IF (cc)), Immunohistochemistry (Frozen Sections) (IHC (fro))

Product Details

Immunogen:	KLH conjugated synthetic phosphopeptide derived from human SGK1 around the phosphorylation site of Ser78
Isotype:	IgG
Cross-Reactivity:	Human, Mouse, Rat
Predicted Reactivity:	Dog,Cow,Pig,Horse
Purification:	Purified by Protein A.

Target Details

Target:	SGK1
Alternative Name:	SGK1 (SGK1 Products)
Background:	<p>Synonyms: SGK, Serine/threonine-protein kinase Sgk1, Serum/glucocorticoid-regulated kinase 1, SGK1</p> <p>Background: This gene encodes a serine/threonine protein kinase that plays an important role in cellular stress response. This kinase activates certain potassium, sodium, and chloride channels, suggesting an involvement in the regulation of processes such as cell survival, neuronal excitability, and renal sodium excretion. High levels of expression of this gene may contribute to conditions such as hypertension and diabetic nephropathy. Several alternatively spliced transcript variants encoding different isoforms have been noted for this gene. [provided by RefSeq, Jan 2009]</p>
Gene ID:	6446
UniProt:	O00141
Pathways:	MAPK Signaling , Notch Signaling , Steroid Hormone Mediated Signaling Pathway

Application Details

Application Notes:	WB 1:300-5000 ELISA 1:500-1000 FCM 1:20-100 IHC-P 1:200-400 IHC-F 1:100-500 IF(IHC-P) 1:50-200 IF(IHC-F) 1:50-200 IF(ICC) 1:50-200
Restrictions:	For Research Use only

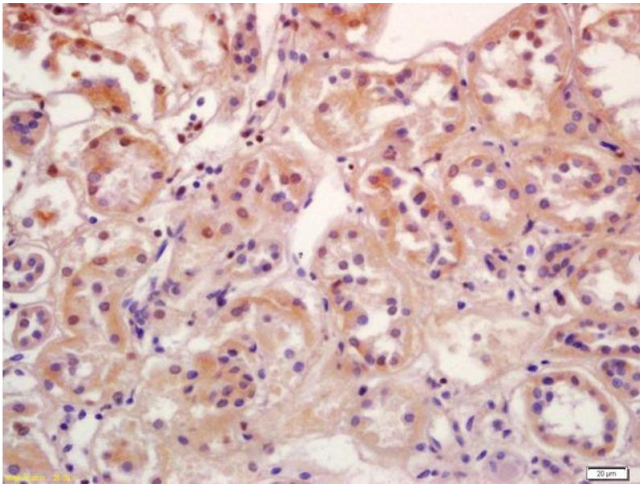
Handling

Format:	Liquid
Concentration:	1 µg/µL
Buffer:	0.01M TBS(pH 7.4) with 1 % BSA, 0.02 % Proclin300 and 50 % Glycerol.
Preservative:	ProClin

Handling

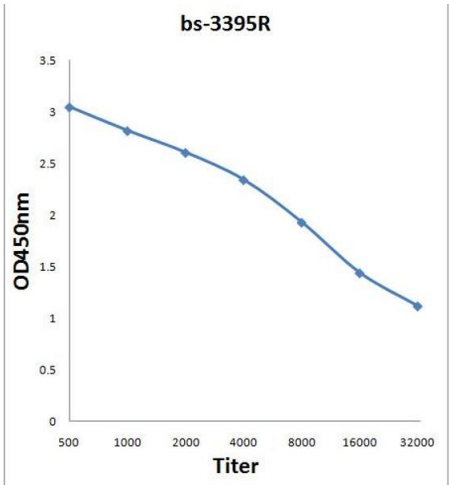
Precaution of Use:	This product contains ProClin: a POISONOUS AND HAZARDOUS SUBSTANCE, which should be handled by trained staff only.
Storage:	4 °C,-20 °C
Storage Comment:	Shipped at 4°C. Store at -20°C for one year. Avoid repeated freeze/thaw cycles.
Expiry Date:	12 months

Images



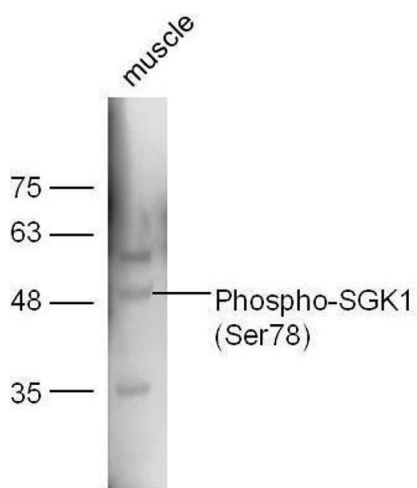
Immunohistochemistry

Image 1. Formalin-fixed and paraffin embedded human kidney labeled with Anti-Phospho-SGK1 (Ser78) Polyclonal Antibody, Unconjugated (ABIN745688) at 1:200 followed by conjugation to the secondary antibody and DAB staining



ELISA

Image 2. Antigen: 0.2 µg/100 µL Primary: Antiserum, 1:500, 1:1000, 1:2000, 1:4000, 1:8000, 1:16000, 1:32000; Secondary: HRP conjugated Goat-Anti-Rabbit IgG at 1: 5000; TMB staining; Read the data in MicroplateReader by 450



Western Blotting

Image 3. Mouse muscle lysates probed with Rabbit Anti-SGK1 (Ser78) Polyclonal Antibody, Unconjugated at 1:5000 for 90 min at 37°C.

Please check the [product details page](#) for more images. Overall 4 images are available for ABIN745688.