

Datasheet for ABIN745868
anti-SMC1A antibody (pSer957)

2 Images

[Go to Product page](#)

Overview

Quantity:	100 µL
Target:	SMC1A
Binding Specificity:	pSer957
Reactivity:	Human
Host:	Rabbit
Clonality:	Polyclonal
Conjugate:	This SMC1A antibody is un-conjugated
Application:	ELISA, Immunohistochemistry (Paraffin-embedded Sections) (IHC (p)), Flow Cytometry (FACS), Immunofluorescence (Cultured Cells) (IF (cc)), Immunofluorescence (Paraffin-embedded Sections) (IF (p)), Immunohistochemistry (Frozen Sections) (IHC (fro))

Product Details

Immunogen:	KLH conjugated synthetic phosphopeptide derived from human SMC1 around the phosphorylation site of Ser957 [GS(p-S)QG]
Isotype:	IgG
Specificity:	This phosphorylation site is homologous across the listed species.
Cross-Reactivity:	Human
Predicted Reactivity:	Mouse, Sheep
Purification:	Purified by Protein A.

Target Details

Target:	SMC1A
Alternative Name:	SMC1 (SMC1A Products)
Background:	<p>Synonyms: SMC1, SMCB, CDLS2, SB1.8, SMC1L1, DXS423E, SMC1alpha, Structural maintenance of chromosomes protein 1A, SMC protein 1A, SMC-1-alpha, SMC-1A, SMC1A, KIAA0178</p> <p>Background: Involved in chromosome cohesion during cell cycle and in DNA repair. Central component of cohesin complex. The cohesin complex is required for the cohesion of sister chromatids after DNA replication. The cohesin complex apparently forms a large proteinaceous ring within which sister chromatids can be trapped. At anaphase, the complex is cleaved and dissociates from chromatin, allowing sister chromatids to segregate. The cohesin complex may also play a role in spindle pole assembly during mitosis. Involved in DNA repair via its interaction with BRCA1 and its related phosphorylation by ATM, or via its phosphorylation by ATR. Works as a downstream effector both in the ATM/NBS1 branch and in the ATR/MSH2 branch of S-phase checkpoint.</p>
Gene ID:	8243
UniProt:	Q14683
Pathways:	Stem Cell Maintenance

Application Details

Application Notes:	ELISA 1:500-1000 FCM 1:20-100 IHC-P 1:200-400 IHC-F 1:100-500 IF(IHC-P) 1:50-200 IF(IHC-F) 1:50-200 IF(ICC) 1:50-200
--------------------	--

Restrictions:	For Research Use only
---------------	-----------------------

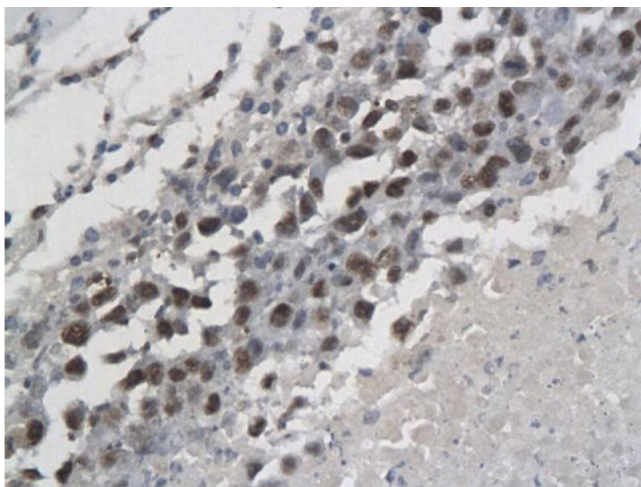
Handling

Format:	Liquid
Concentration:	1 µg/µL
Buffer:	0.01M TBS(pH 7.4) with 1 % BSA, 0.02 % Proclin300 and 50 % Glycerol.

Handling

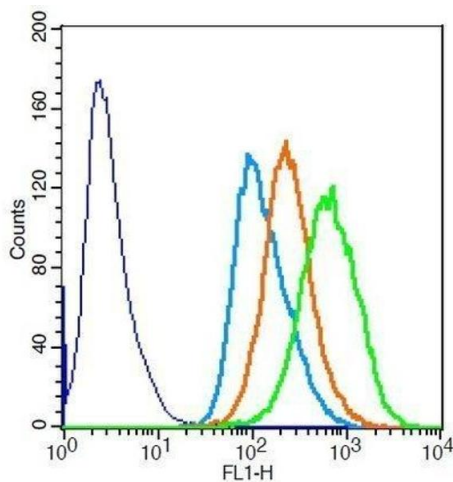
Preservative:	ProClin
Precaution of Use:	This product contains ProClin: a POISONOUS AND HAZARDOUS SUBSTANCE, which should be handled by trained staff only.
Storage:	4 °C,-20 °C
Storage Comment:	Shipped at 4°C. Store at -20°C for one year. Avoid repeated freeze/thaw cycles.
Expiry Date:	12 months

Images



Immunohistochemistry

Image 1. Formalin-fixed and paraffin embedded human endometrial cancer labeled with Anti-Phospho-SMC1(Ser957) Polyclonal Antibody, Unconjugated (ABIN745868) followed by conjugation to the secondary antibody and DAB staining



Flow Cytometry

Image 2. HeLa cells probed with Rabbit Anti-SMC1(Ser957) Polyclonal Antibody .