



[Go to Product page](#)

Datasheet for ABIN745988

anti-CRTC2 antibody (pSer171)

2 Images

4 Publications

Overview

Quantity:	100 µL
Target:	CRTC2
Binding Specificity:	pSer171
Reactivity:	Human, Mouse
Host:	Rabbit
Clonality:	Polyclonal
Conjugate:	This CRTC2 antibody is un-conjugated
Application:	Western Blotting (WB), ELISA, Flow Cytometry (FACS)

Product Details

Immunogen:	KLH conjugated synthetic phosphopeptide derived from human CREB regulated transcription coactivator 2 around the phosphorylation site of Ser171
Isotype:	IgG
Cross-Reactivity:	Human, Mouse
Predicted Reactivity:	Rat,Dog,Pig
Purification:	Purified by Protein A.

Target Details

Target:	CRTC2
Alternative Name:	TORC2 (CRTC2 Products)

Target Details

Background: Synonyms: TORC2, TORC-2, CREB-regulated transcription coactivator 2, Transducer of regulated cAMP response element-binding protein 2, Transducer of CREB protein 2, CRTC2
Background: Transcriptional coactivator for CREB1 which activates transcription through both consensus and variant cAMP response element (CRE) sites. Acts as a coactivator, in the SIK/TORC signaling pathway, being active when dephosphorylated and acts independently of CREB1 'Ser-133' phosphorylation. Enhances the interaction of CREB1 with TAF4. Regulates gluconeogenesis as a component of the LKB1/AMPK/TORC2 signaling pathway. Regulates the expression of specific genes such as the steroidogenic gene, StAR. Potent coactivator of PPARGC1A and inducer of mitochondrial biogenesis in muscle cells. Also coactivator for TAX activation of the human T-cell leukemia virus type 1 (HTLV-1) long terminal repeats (LTR).

Gene ID: 200186

UniProt: [Q53ETO](#)

Pathways: [AMPK Signaling](#), [Carbohydrate Homeostasis](#)

Application Details

Application Notes: WB 1:300-5000
ELISA 1:500-1000
FCM 1:20-100

Restrictions: For Research Use only

Handling

Format: Liquid

Concentration: 1 µg/µL

Buffer: 0.01M TBS(pH 7.4) with 1 % BSA, 0.02 % Proclin300 and 50 % Glycerol.

Preservative: ProClin

Precaution of Use: This product contains ProClin: a POISONOUS AND HAZARDOUS SUBSTANCE, which should be handled by trained staff only.

Storage: 4 °C,-20 °C

Storage Comment: Shipped at 4°C. Store at -20°C for one year. Avoid repeated freeze/thaw cycles.

Expiry Date: 12 months

Publications

Product cited in:

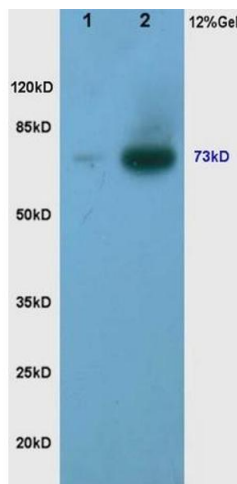
Slocum, Skoko, Wakabayashi, Aja, Yamamoto, Kensler, Chartoumpakis: "Keap1/Nrf2 pathway activation leads to a repressed hepatic gluconeogenic and lipogenic program in mice on a high-fat diet." in: **Archives of biochemistry and biophysics**, Vol. 591, pp. 57-65, (2016) ([PubMed](#)).

Seok, Fu, Choi, Li, Zhu, Kumar, Sun, Yoon, Kang, Zhong, Ma, Kemper, Kemper: "Transcriptional regulation of autophagy by an FXR-CREB axis." in: **Nature**, Vol. 516, Issue 7529, pp. 108-111, (2015) ([PubMed](#)).

Tian, Zhao, Sun, Zhi, Cheng, Zhou, Hu: "CRTc2 enhances HBV transcription and replication by inducing PGC1 β expression." in: **Virology journal**, Vol. 11, Issue 1, pp. 30, (2014) ([PubMed](#)).

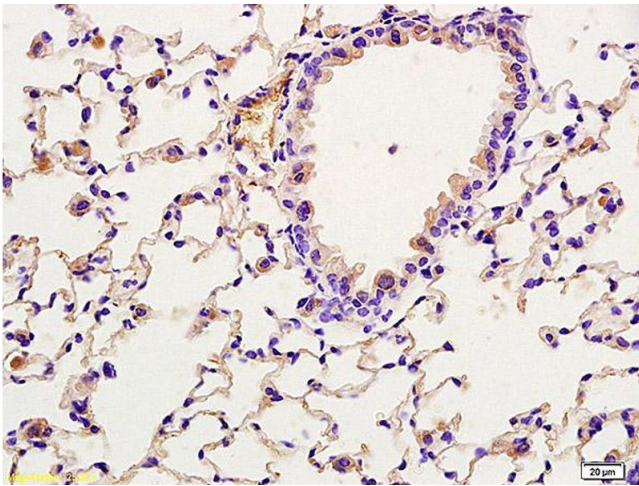
Cicerchi, Li, Kratzer, Garcia, Roncal-Jimenez, Tanabe, Hunter, Rivard, Sautin, Gaucher, Johnson, Lanasa: "Uric acid-dependent inhibition of AMP kinase induces hepatic glucose production in diabetes and starvation: evolutionary implications of the uricase loss in hominids." in: **FASEB journal : official publication of the Federation of American Societies for Experimental Biology**, Vol. 28, Issue 8, pp. 3339-50, (2014) ([PubMed](#)).

Images



SDS-PAGE

Image 1. L1 human rectal carcinoma lysates L2 human gastric carcinoma lysates, probed with Anti Phospho-Torc2/Crtc2(Ser171) Polyclonal Antibody, Unconjugated (ABIN745988) at 1:200 overnight at 4 °C. Followed by conjugation to secondary antibody at 1:3000 for 90 min at 37 °C. Predicted band 73kD. Observed band size:73kD.



Immunohistochemistry

Image 2. Formalin-fixed and paraffin embedded rat lung labeled with Anti-Phospho-Torc2/Crtc2(Ser171) Polyclonal Antibody (ABIN745988), Unconjugated at 1:200 followed by conjugation to the secondary antibody and DAB staining