



[Go to Product page](#)

Datasheet for ABIN746078

## anti-ARAF antibody (pTyr301, pTyr302)

### 2 Images

#### Overview

Quantity:	100 µL
Target:	ARAF
Binding Specificity:	pTyr301, pTyr302
Reactivity:	Human, Mouse
Host:	Rabbit
Clonality:	Polyclonal
Conjugate:	This ARAF antibody is un-conjugated
Application:	Western Blotting (WB), ELISA, Immunofluorescence (Cultured Cells) (IF (cc)), Immunofluorescence (Paraffin-embedded Sections) (IF (p)), Immunohistochemistry (Paraffin-embedded Sections) (IHC (p)), Immunohistochemistry (Frozen Sections) (IHC (fro))

#### Product Details

Immunogen:	KLH conjugated synstic phosphopeptide derived from human A Raf around the phosphorylation site of Tyr301/302 [G(p-Y)(p-Y)WE]
Isotype:	IgG
Cross-Reactivity:	Human, Mouse
Predicted Reactivity:	Rat,Dog,Cow,Sheep,Pig,Horse,Rabbit
Purification:	Purified by Protein A.

#### Target Details

Target:	ARAF
---------	------

## Target Details

---

Alternative Name: A Raf + ([ARAF Products](#))

---

Background: Synonyms: A RAF phospho Y301 + Y302, p-A RAF phospho Y301 + Y302, A raf 1, A Raf proto oncogene serine/threonine protein kinase, ARAF 1, ARAF, ARaf proto oncogene serine/threonine protein kinase, ARAF1, Oncogene Araf1, Oncogene PKS2, PKS 2, PKS, PKS2, Proto oncogene Pks, RAFA 1, RAFA1, Ras binding protein DA Raf, v raf murine sarcoma 3611 viral oncogene homolog, v raf murine sarcoma 3611 viral oncogene homolog 1, v raf oncogene homolog 1 murine sarcoma 3611 virus, ARAF\_HUMAN.

Background: The RAF family of signaling proteins has three isoforms: A RAF, RAF 1 and B RAF. These proteins are instrumental in forwarding the stimulus generated by mitogens from monomeric G proteins to the MAP kinase pathway. RAF 1 is known to be downstream of Ras and binds to it by an N terminal noncatalytic domain. This domain is conserved in A RAF and B RAF. 14-3-3 is also known to be an activator of RAFs. Activated RAF directly phosphorylates and activates MEK. A RAF is expressed at a very high concentration in urogenital and kidney tissues.

---

Gene ID: 369

---

Pathways: [MAPK Signaling](#), [RTK Signaling](#), [Hepatitis C](#)

---

## Application Details

---

Application Notes: WB 1:300-5000  
ELISA 1:500-1000  
IHC-P 1:200-400  
IHC-F 1:100-500  
IF(IHC-P) 1:50-200  
IF(IHC-F) 1:50-200  
IF(ICC) 1:50-200

---

Restrictions: For Research Use only

---

## Handling

---

Format: Liquid

---

Concentration: 1 µg/µL

---

Buffer: 0.01M TBS( pH 7.4) with 1 % BSA, 0.02 % Proclin300 and 50 % Glycerol.

---

Preservative: ProClin

---

## Handling

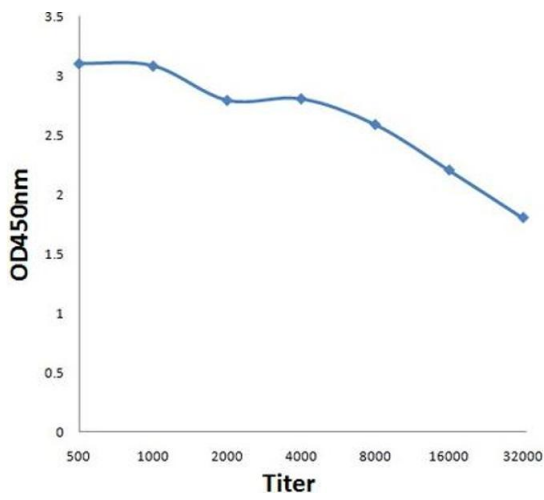
Precaution of Use: This product contains ProClin: a POISONOUS AND HAZARDOUS SUBSTANCE, which should be handled by trained staff only.

Storage: 4 °C, -20 °C

Storage Comment: Shipped at 4°C. Store at -20°C for one year. Avoid repeated freeze/thaw cycles.

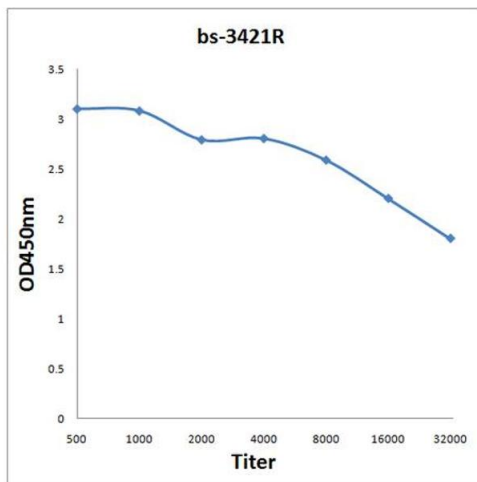
Expiry Date: 12 months

## Images



### ELISA

**Image 1.** Antigen: 0.2ug/100ul, Primary: Antiserum, 1:500, 1:1000, 1:2000, 1:4000, 1:8000, 1:16000, 1:32000, Secondary: HRP conjugated Goat-Anti-Rabbit IgG at 1: 5000, TMB staining, Read the data in MicroplateReader by 450nm



### ELISA

**Image 2.** Antigen: 0.2 µg/100 µL Primary: Antiserum, 1:500, 1:1000, 1:2000, 1:4000, 1:8000, 1:16000, 1:32000; Secondary: HRP conjugated Goat-Anti-Rabbit IgG at 1: 5000; TMB staining; Read the data in MicroplateReader by 450