

Datasheet for ABIN746453  
**anti-tau antibody (pSer396)**[Go to Product page](#)

3 Images

1 Publication

## Overview

Quantity:	100 µL
Target:	tau
Binding Specificity:	pSer396
Reactivity:	Human, Mouse, Rat
Host:	Rabbit
Clonality:	Polyclonal
Conjugate:	This tau antibody is un-conjugated
Application:	Western Blotting (WB), ELISA, Immunofluorescence (Paraffin-embedded Sections) (IF (p)), Immunofluorescence (Cultured Cells) (IF (cc)), Immunohistochemistry (Paraffin-embedded Sections) (IHC (p)), Immunohistochemistry (Frozen Sections) (IHC (fro))

## Product Details

Immunogen:	KLH conjugated synthetic phosphopeptide derived from human Tau protein around the phosphorylation site of Ser396 [KT(p-S)T]
Isotype:	IgG
Cross-Reactivity:	Human, Mouse, Rat
Predicted Reactivity:	Dog
Purification:	Purified by Protein A.

## Target Details

Target:	tau
---------	-----

## Target Details

Abstract: [tau Products](#)

Background: Synonyms: TAU, MSTD, PPND, DDPAC, MAPTL, MTBT1, MTBT2, FTDP-17, PPP1R13, Microtubule-associated protein tau, Neurofibrillary tangle protein, Paired helical filament-tau, PHF-tau, MAPT

Background: Promotes microtubule assembly and stability, and might be involved in the establishment and maintenance of neuronal polarity. The C-terminus binds axonal microtubules while the N-terminus binds neural plasma membrane components, suggesting that tau functions as a linker protein between both. Axonal polarity is predetermined by TAU/MAPT localization (in the neuronal cell) in the domain of the cell body defined by the centrosome. The short isoforms allow plasticity of the cytoskeleton whereas the longer isoforms may preferentially play a role in its stabilization.

Gene ID: 4137

UniProt: [P10636](#)

## Application Details

Application Notes: WB 1:300-5000  
ELISA 1:500-1000  
IHC-P 1:200-400  
IHC-F 1:100-500  
IF(IHC-P) 1:50-200  
IF(IHC-F) 1:50-200  
IF(ICC) 1:50-200

Restrictions: For Research Use only

## Handling

Format: Liquid

Concentration: 1 µg/µL

Buffer: 0.01M TBS( pH 7.4) with 1 % BSA, 0.02 % Proclin300 and 50 % Glycerol.

Preservative: ProClin

Precaution of Use: This product contains ProClin: a POISONOUS AND HAZARDOUS SUBSTANCE, which should be handled by trained staff only.

Storage: 4 °C, -20 °C

## Handling

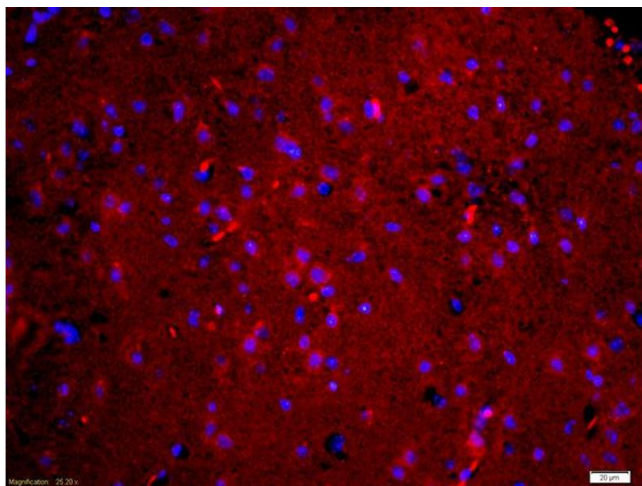
Storage Comment: Shipped at 4°C. Store at -20°C for one year. Avoid repeated freeze/thaw cycles.

Expiry Date: 12 months

## Publications

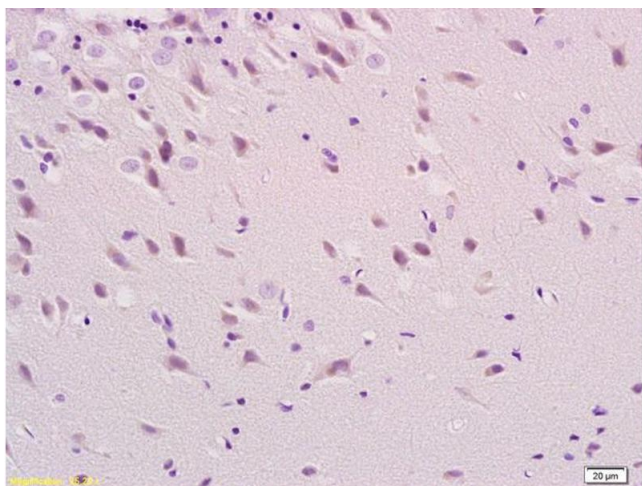
Product cited in: Cai, Yan, Wang: "Minocycline alleviates beta-amyloid protein and tau pathology via restraining neuroinflammation induced by diabetic metabolic disorder." in: **Clinical interventions in aging**, Vol. 8, pp. 1089-95, (2013) ([PubMed](#)).

## Images



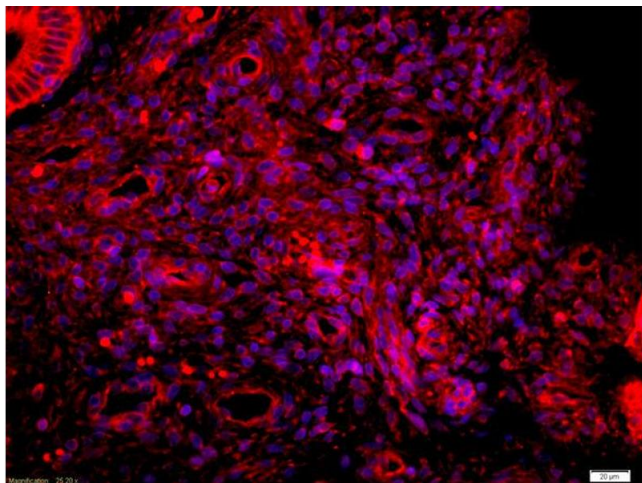
### Immunofluorescence

**Image 1.** Formalin-fixed and paraffin embedded mouse brain labeled with Anti-phospho-Tau protein(Ser396) Polyclonal Antibody, Unconjugated (ABIN746453) at 1:200 followed by conjugation to the secondary antibody Goat Anti-Rabbit IgG, Cy3 conjugated used at 1:200 dilution for 40 minutes at 37°C and DAPI staining



### Immunohistochemistry

**Image 2.** Formalin-fixed and paraffin embedded rat brain labeled with Anti-phospho-Tau protein(Ser396) Polyclonal Antibody, Unconjugated (ABIN746453) at 1:200 followed by conjugation to the secondary antibody



#### Immunofluorescence

**Image 3.** Formalin-fixed and paraffin embedded Human endometrium labeled with Anti-phospho-Tau protein(Ser396) Polyclonal Antibody, Unconjugated (ABIN746453) at 1:200 followed by conjugation to the secondary antibody Goat Anti-Rabbit IgG, Cy3 conjugated used at 1:200 dilution for 40 minutes at 37°C and DAPI staining